

Village of Villa Park
20 South Ardmore Ave
Villa Park, Illinois 60181
630-834-8500
publicworks@invillapark.com

To: All Planholders

From: Village of Villa Park

Re: Village of Villa Park – South Michigan Avenue Reconstruction

ADDENDUM 1

12/6/2016

MESSAGE

*******ALL PLANHOLDERS PLEASE NOTE*******

Upon receipt of this Addendum, please **sign the requested confirmation below regardless of whether you plan to bid or not** and EMAIL to:

publicworks@invillapark.com

RECEIVED DATE:
NAME:
TITLE:
COMPANY NAME:
SIGNATURE:

If you do not receive all of the pages indicated above, please call the above number. This facsimile contains privileged information intended for the use of the individual named above. If the reader of the facsimile is not the intended recipient or the employee responsible for delivering it, you are hereby notified that any dissemination or copying of this facsimile is strictly prohibited. If you have received this transmission in error, please notify us immediately by telephone and return the original to us at the address above. Thank you.

ADDENDUM NO. 1

DATE: December 6, 2016

FROM: Baxter & Woodman, Inc. Consulting Engineers

TO: Planholders of record for the Work titled

VILLAGE OF VILLA PARK, ILLINOIS
SOUTH MICHIGAN AVENUE RECONSTRUCTION

The Bidding Documents are amended as follows:

1. SPECIAL PROVISIONS
 - A. **Delete** the existing SCHEDULE OF PRICES sheet 1 and 4 (BLR 12220a - page 5-1 and 5-4) from the CONTRACT DOCUMENTS and **insert** the attached page 1 and 4 of the SCHEDULE OF PRICES SHEET. This revision adds additional trench backfill and a manhole restrictor.
 - B. **Delete** the existing SIGNATURE SHEET (BLR 12200 – page 7) in its entirety from the CONTRACT DOCUMENTS and **insert** the attached SIGNATURE SHEET. This revision adds acknowledgement of Addendum No. 1.
 - C. **Delete** the existing special provision for “ITEM #68-70 - STORM SEWERS (WATER MAIN QUALITY)” and **insert** the attached special provision. This revision clarifies acceptable materials for this work.
 - D. Add the attached special provision for “MANHOLE RESTRICTOR”. This revision adds a special provision for the manhole restrictor.
2. PLAN SET
 - A. Delete the existing SCHEDULE OF QUANTITIES SHEETS (sheet 3 and 5) from the PLAN SET and **insert** the attached sheet 3 and 5 of the SCHEDULE OF QUANTITIES. This revision adds additional trench backfill and a manhole restrictor.
 - B. Delete the existing DRAINAGE & UTILITY sheets 16-19 from the PLAN SET and **insert** the attached sheets 16-19. This revisions lowers the inverts of the mainline storm sewer and adds a manhole restrictor.
 - C. Delete the existing MISCELLANEOUS DETAIL sheet 27 from the PLAN SET and **insert** the attached sheet 27. This revisions adds a manhole restrictor detail.
 - D. Revised cross sections shall be provided for construction.

Nothing in this Addendum shall be construed as changing other requirements of the Bidding Documents. Each Bidder shall acknowledge receipt of this Addendum where indicated in the Bid Form.



**Illinois Department
of Transportation**

SCHEDULE OF PRICES

ADDENDUM 1

County DuPage
 Local Public Agency Village of Villa Park
 Section N/A
 Route South Michigan Avenue

Schedule for Multiple Bids

Combination Letter	Sections Included in Combinations	Total

Schedule for Single Bid

(For complete information covering these items, see plans and specifications)

Bidder's Proposal for making Entire Improvements

Item No.	Items	Unit	Quantity	Unit Price	Total
1	TEMPORARY FENCE	FOOT	200		
2	TREE ROOT PRUNING	EACH	81		
3	EARTH EXCAVATION	CU YD	1,588		
4	REMOVAL AND DISPOSAL OF UNSUITABLE MATERIAL	CU YD	1,603		
5	TRENCH BACKFILL	CU YD	3,822		
6	GEOTECHNICAL FABRIC FOR GROUND STABILIZATION	SQ YD	8,492		
7	PARKWAY RESTORATION	SQ YD	5,600		
8	SUPPLEMENTAL WATERING	UNIT	42		
9	PERIMETER EROSION BARRIER	FOOT	820		
10	INLET FILTERS	EACH	41		
11	AGGREGATE SUBGRADE IMPROVEMENT	CU YD	980		
12	AGGREGATE BASE COURSE, TYPE B 4"	SQ YD	2,441		
13	AGGREGATE BASE COURSE, TYPE B 6"	SQ YD	8,241		
14	BITUMINOUS MATERIALS (TACK COAT)	POUND	4,780		
15	HOT-MIX ASPHALT BINDER COURSE, IL-19.0, N50	TON	1,627		
16	HOT-MIX ASPHALT SURFACE COURSE, MIX "D", N50	TON	834		

RETURN WITH BID

ADDENDUM 1

Bidder's Proposal for making Entire Improvements

Item No.	Items	Unit	Quantity	Unit Price	Total
63	THERMOPLASTIC PAVEMENT MARKING - LINE 6"	FOOT	105		
64	THERMOPLASTIC PAVEMENT MARKING - LINE 24"	FOOT	66		
65	HOT-MIX ASPHALT DRIVEWAY PAVEMENT, 4"	SQ YD	896		
66	CONSTRUCTION LAYOUT	L SUM	1		
67	DUST CONTROL WATERING	UNIT	43		
68	STORM SEWER (WATER MAIN QUALITY) 12 INCH	FOOT	493		
69	STORM SEWER (WATER MAIN QUALITY) 18 INCH	FOOT	62		
70	STORM SEWER (WATER MAIN REQUIREMENTS) EQUIVALENT ROUND-SIZE 36 INCH	FOOT	53		
71	REMOVE AND REINSTALL BRICK PAVER	SQ FT	50		
72	EXPLORATION TRENCH, SPECIAL	FOOT	200		
73	TEMPORARY ACCESS (PRIVATE ENTRANCE)	EACH	74		
74	TEMPORARY ACCESS (ROAD)	EACH	7		
75	SANITARY MANHOLES TO BE ADJUSTED	EACH	3		
76	TRAFFIC CONTROL AND PROTECTION, (SPECIAL)	L SUM	1		
77	PRE-CONSTRUCTION VIDEO RECORDING	L SUM	1		
78	PVC PIPE DRAINS SDR 26 ASTM D-2241, 6"	FOOT	150		
79	LIMESTONE SCREENINGS FA-5, 2"	SQ YD	275		
80	MANHOLE RESTRICTOR	EACH	1		
81	WATER USAGE DEDUCTION	TGAL	100	-\$8.85	-\$885.00
82	WATER USAGE CREDIT	TGAL	100	\$8.85	\$885.00
83	CONTINGENCY ALLOWANCE	DOLLAR	30,000	\$1.00	\$30,000.00

RETURN WITH BID

SIGNATURES

County DuPage
Local Public Agency Village of Villa Park
Section Number N/A
Route South Michigan Avenue

(If an individual)

Signature of Bidder _____

Business Address _____

(If a partnership)

Firm Name _____

Signed By _____

Business Address _____

Inset Names and Addressed of All Partners



(If a corporation)

Corporate Name _____

Signed By _____

President

Business Address _____

Inset Names of Officers



President _____

Secretary _____

Treasurer _____

Attest: _____
Secretary

BIDDER ACKNOWLEDGES RECEIPT OF ADDENDUM 1
DATE RECEIVED: _____
BY: _____

ITEM #68-70 - STORM SEWERS (WATER MAIN QUALITY)

This work shall be done in accordance with Section 550 of the Standard Specifications except as modified herein.

550.02 Materials. Revise this Article to read:

“550.02 Materials. The storm sewer pipe shall be water main quality pipe meeting the requirements of sections 40 and 41 – 2.01 of the “Standard Specifications for Water and Sewer Main Construction in Illinois”.

PVC (SDR 26) pipe shall be used in accordance with ASTM D-2241, with joints conforming to ASTM D-3139 and flexible elastomeric gaskets meeting ASTM F-477 criteria.

Ductile-iron pipe shall conform to ANSI A 21.51 (AWWA C151), class or thickness designed per ANSI A 21.50 (AWWA C150), tar (seal) coated and/or cement lined per ANSI A 21.4 (AWWA C104), with a mechanical or rubber ring (slip seal or push on) joints. Joints for ductile iron pipe shall be in accordance with the following applicable specifications: Mechanical Joints - AWWA C111 and C600, Push-On Joints - AWWA C111 and C600.

Concrete pressure pipe shall conform to the latest ANSI/AWWA C300, C301, C302, or C303. Joints shall conform to Article 41-2.07B of the “Standard Specifications for Water and Sewer Main Construction in Illinois.”

550.10 Basis of Payment. Revise the first paragraph of this Article to read:

“550.10 Basis of Payment. This work will be paid for at the contract unit price per foot for STORM SEWERS (WATER MAIN QUALITY), of the diameter specified, which price shall also include connections to existing storm sewer structures and existing storm sewers.”

MANHOLE RESTRICTOR

This work shall consist of furnishing and installing a 3” restrictor in the outlet pipe of a proposed manhole as shown in the plans and details. This work shall be done in accordance with the Standard Specifications and details in the plans.

Materials. Restrictor shall be mortared in with non-shrink grout in accordance with Section 1024.02 of the Standard Specifications.

Method of Measurement. This work will be measured for payments in units of EACH.

Basis of Payment. This work will be paid for at the contract unit price per each for MANHOLE RESTRICTOR.

SUMMARY OF QUANTITIES

NUMBER	PAY ITEM	UNIT	TOTAL QUANTITY	ROADWAY	SANITARY	WATER	SEWER SEPARATION
1	TEMPORARY FENCE	FOOT	200	200			
# *	2	TREE ROOT PRUNING	EACH	81	81		
	3	EARTH EXCAVATION	CU YD	1,588	1,588		
	4	REMOVAL AND DISPOSAL OF UNSUITABLE MATERIAL	CU YD	1,603	1,603		
#	5	TRENCH BACKFILL	CU YD	3,822		44	3,778
	6	GEOTECHNICAL FABRIC FOR GROUND STABILIZATION	SQ YD	8,492	8,492		
# *	7	PARKWAY RESTORATION	SQ YD	5,600	5,600		
	8	SUPPLEMENTAL WATERING	UNIT	42	42		
	9	PERIMETER EROSION BARRIER	FOOT	820	820		
#	10	INLET FILTERS	EACH	41	41		
#	11	AGGREGATE SUBGRADE IMPROVEMENT	CU YD	980	980		
	12	AGGREGATE BASE COURSE, TYPE B 4"	SQ YD	2,441	2,441		
	13	AGGREGATE BASE COURSE, TYPE B 6"	SQ YD	8,241	8,241		
#	14	BITUMINOUS MATERIALS (TACK COAT)	POUND	4,780	4,780		
	15	HOT-MIX ASPHALT BINDER COURSE, IL-19.0, N50	TON	1,627	1,627		

* SPECIALTY ITEM
SPECIAL PROVISION

NUMBER	PAY ITEM	UNIT	TOTAL QUANTITY	ROADWAY	SANITARY	WATER	SEWER SEPARATION
16	HOT-MIX ASPHALT SURFACE COURSE, MIX "D", N50	TON	834	834			
17	PROTECTIVE COAT	SQ YD	2,200	2,200			
18	PORTLAND CEMENT CONCRETE DRIVEWAY PAVEMENT, 6 INCH	SQ YD	663	663			
19	PORTLAND CEMENT CONCRETE SIDEWALK 5 INCH	SQ FT	2,075	2,075			
20	DETECTABLE WARNINGS	SQ FT	220	220			
#	21	PAVEMENT REMOVAL	SQ YD	7,030	7,030		
#	22	DRIVEWAY PAVEMENT REMOVAL	SQ YD	1,402	1,402		
	23	COMBINATION CURB AND GUTTER REMOVAL	FOOT	5,395	5,395		
	24	SIDEWALK REMOVAL	SQ FT	2,715	2,715		
#	25	CLASS D PATCHES, 6 INCH	SQ YD	22			22
	26	STORM SEWERS, RUBBER GASKET, CLASS A, TYPE 1 12"	FOOT	231			231
	27	STORM SEWERS, RUBBER GASKET, CLASS A, TYPE 2 12"	FOOT	400			400
	28	STORM SEWERS, RUBBER GASKET, CLASS A, TYPE 2 18"	FOOT	361			361
	29	STORM SEWERS, RUBBER GASKET, CLASS A, TYPE 2 30"	FOOT	1,155			1,155
	30	STORM SEWERS, RUBBER GASKET, CLASS A, TYPE 2 36"	FOOT	252			252

* SPECIALTY ITEM
SPECIAL PROVISION

COPYRIGHT © 2016 BY BAYTER & WOODMAN, INC.
 STATE OF ILLINOIS - PROFESSIONAL DESIGN FIRM
 LICENSE NO. - 184-001231 - EXPIRES 4/30/2017
 12/15/2016 4:01:54 PM
 I:\Crs\StalLake\VL\PK\131011SHT-South Michigan Ave\cadd\Drawings\131011SHT-S00.dgn

DESIGNED - TMS	REVISED - 04-07-16
DRAWN - MAC	REVISED - ADDENDUM 1 12-5-16
CHECKED - JJF	REVISED -
DATE - 10-18-16	FILE - 131011SHT-S00.dgn

**VILLAGE OF VILLA PARK, ILLINOIS
SOUTH MICHIGAN AVENUE**

SUMMARY OF QUANTITIES

SCALE: NONE

STA. TO STA.

F.A. RTE.	SECTION	COUNTY	TOTAL SHEETS	SHEET NO.
N/A	N/A		39	3
CONTRACT NO.				
FED. ROAD DIST. NO. 1 ILLINOIS FED. AID PROJECT				

SUMMARY OF QUANTITIES

NUMBER	PAY ITEM	UNIT	TOTAL QUANTITY	ROADWAY	SANITARY	WATER	SEWER SEPARATION
61	NON-SPECIAL WASTE DISPOSAL	CU YD	150	150			
62	SOIL DISPOSAL ANALYSIS	EACH	1	1			
* 63	THERMOPLASTIC PAVEMENT MARKING - LINE 6"	FOOT	105	105			
* 64	THERMOPLASTIC PAVEMENT MARKING - LINE 24"	FOOT	66	66			
# 65	HOT-MIX ASPHALT DRIVEWAY PAVEMENT, 4"	SQ YD	896	896			
66	CONSTRUCTION LAYOUT	L SUM	1	1			
# 67	DUST CONTROL WATERING	UNIT	43	43			
# 68	STORM SEWER (WATER MAIN QUALITY) 12 INCH	FOOT	493				493
# 69	STORM SEWER (WATER MAIN QUALITY) 18 INCH	FOOT	62				62
# 70	STORM SEWER (WATER MAIN REQUIREMENTS) EQUIVALENT ROUND-SIZE 36 INCH	FOOT	53				53
# 71	REMOVE AND REINSTALL BRICK PAVER	SQ FT	50	50			
# 72	EXPLORATION TRENCH, SPECIAL	FOOT	200	200			
# 73	TEMPORARY ACCESS (PRIVATE ENTRANCE)	EACH	74	74			
# 74	TEMPORARY ACCESS (ROAD)	EACH	7	7			
# 75	SANITARY MANHOLES TO BE ADJUSTED	EACH	3	3			

* SPECIALTY ITEM
SPECIAL PROVISION

NUMBER	PAY ITEM	UNIT	TOTAL QUANTITY	ROADWAY	SANITARY	WATER	SEWER SEPARATION
# 76	TRAFFIC CONTROL AND PROTECTION, (SPECIAL)	L SUM	1	1			
# 77	PRE-CONSTRUCTION VIDEO RECORDING	L SUM	1	1			
# 78	PVC PIPE DRAINS SDR 26 ASTM D-2241, 6"	FOOT	150				150
79	LIMESTONE SCREENINGS FA-5, 2"	SQ YD	275	275			
# 80	MANHOLE RESTRICTOR	EACH	1				1
# 81	WATER USAGE DEDUCTION	TGAL	100	100			
# 82	WATER USAGE CREDIT	TGAL	100	100			
# 83	CONTINGENCY ALLOWANCE	DOLLAR	30,000	15,000		10,000	5,000

* SPECIALTY ITEM
SPECIAL PROVISION

COPYRIGHT © 2016 BY BAYTER & WOODMAN, INC.
 STATE OF ILLINOIS - PROFESSIONAL DESIGN FIRM
 LICENSE NO. - 184-00121 - EXPIRES 4/30/2017
 12/15/2016 4:02:00 PM
 I:\Crs\StalLake\131011SHT-South Michigan Ave\cadd\Drawings\131011SHT-S00.dgn

DESIGNED - TMS	REVISED - 04-07-16
DRAWN - MAC	REVISED - ADDENDUM 1 12-5-16
CHECKED - JJF	REVISED -
DATE - 10-18-16	FILE - 131011SHT-S00.dgn

**VILLAGE OF VILLA PARK, ILLINOIS
SOUTH MICHIGAN AVENUE**

SUMMARY OF QUANTITIES

SCALE: NONE

STA. TO STA.

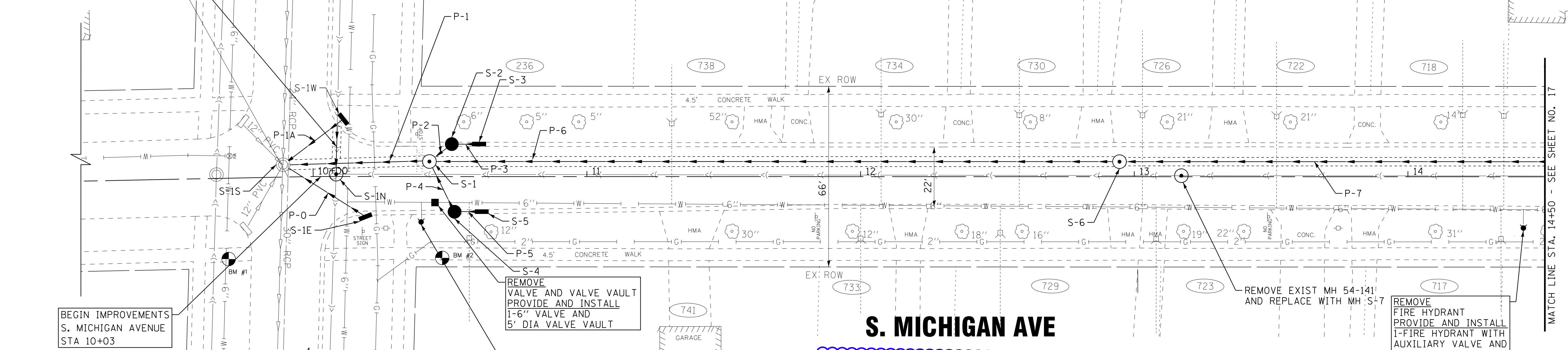
F.A. RTE.	SECTION	COUNTY	TOTAL SHEETS	SHEET NO.
N/A	N/A		39	5
FED. ROAD DIST. NO. 1 ILLINOIS FED. AID PROJECT			CONTRACT NO.	

W. MADISON ST.



REMOVE AND REPLACE
10 LF OF COMBINED SEWER

CL S. MICHIGAN AVENUE STA 9+91
CL W. MADISON STREET



BEGIN IMPROVEMENTS
S. MICHIGAN AVENUE
STA 10+03

REMOVE
VALVE AND VALVE VAULT
PROVIDE AND INSTALL
1-6" VALVE AND
5' DIA VALVE VAULT

REMOVE EXIST MH 54-141
AND REPLACE WITH MH S-7

REMOVE
FIRE HYDRANT
PROVIDE AND INSTALL
1-FIRE HYDRANT WITH
AUXILIARY VALVE AND
VALVE BOX

W. MADISON ST.

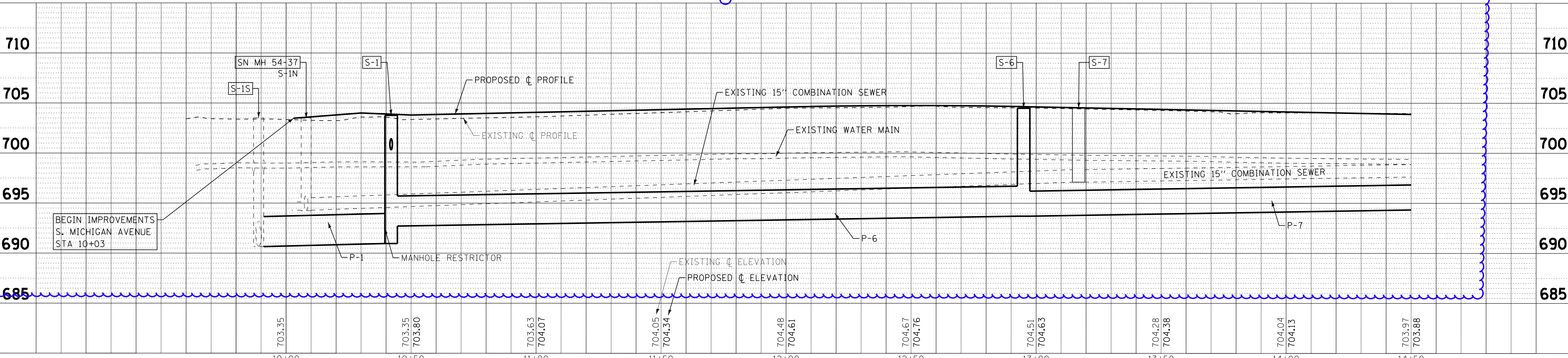
S. MICHIGAN AVE

STORM PIPES

NO.	TYPE	TY	DIA (IN)	LENGTH (FT)	SLOPE	TBF (CU YD)
P-0	STORM SEWERS (WATER MAIN QUALITY)	2	12	33	2.52%	22.4
P-1A	STORM SEWERS (WATER MAIN QUALITY)	2	12	24	2.75%	7.9
P-1	STORM SEWER (WATER MAIN REQUIREMENTS) EQUIVALENT ROUND-SIZE	2	36	53	0.51%	160.1
P-2	STORM SEWERS, RUBBER GASKET, CLASS A	1	12	10	1.00%	2.6
P-3	STORM SEWERS, RUBBER GASKET, CLASS A	1	12	10	1.00%	2.4
P-4	STORM SEWERS (WATER MAIN QUALITY)	1	12	20	1.00%	4.7
P-5	STORM SEWERS, RUBBER GASKET, CLASS A	1	12	10	1.00%	2.4
P-6	STORM SEWERS, RUBBER GASKET, CLASS A	2	36	252	0.40%	529.2
P-7	STORM SEWERS, RUBBER GASKET, CLASS A	2	30	200	0.40%	362.2

STORM STRUCTURES

LABEL	STATION	OFFSET (FT)	TYPE	FRAME	ELEVATION	RIM/EOP	INVERTS
S-1S	9+89	4.5	LT EXISTING MANHOLE		703.52	RIM	EX 690.69 30° E, EX 690.69 24° W, 698.27 12° NE, EX 698.12 12° SW SE NW, 690.69 36° N
S-1E	10+21	13.0	RT INLET TYPE A	T-11 F&G	703.57	EOP	699.10 12° SW
S-1W	10+11	20.5	LT INLET TYPE A	T-11 F&G	703.22	EOP	699.78 12° SE
S-1N	10+08	1.0	LT SAN MANHOLES TYPE A, 4' DIA	TY 1 CL	703.56	RIM	EX 694.24 24° E, EX 694.24 10° S, EX 694.24 24° W, EX 694.24 15° N
S-1	10+42	5.5	LT MANHOLES TYPE A, 5' DIA (W/ RESTRICTOR)	TY 1 CL	703.77	RIM	690.96 36° S, 692.70 36° N, 700.43 12° NW, 700.33 12° NE
S-2	10+51	11.0	LT CATCH BASIN TYPE C	T-11 F&G	703.59	EOP	700.53 12° SE, 700.53 12° N
S-3	10+61	11.0	LT INLET TYPE A	T-11 F&G	703.64	EOP	700.63 12° S
S-4	10+52	12.0	RT CATCH BASIN TYPE C	T-11 F&G	703.57	EOP	700.53 12° SW, 700.53 12° N
S-5	10+62	12.0	RT INLET TYPE A	T-11 F&G	703.63	EOP	700.63 12° S
S-6	12+95	5.5	LT MANHOLES TYPE A, 5' DIA	TY 1 CL	704.55	RIM	693.71 36° S, 693.71 30° N
S-7	13+17	0.0	CL SAN MANHOLES TYPE A, 4' DIA	TY 1 CL	704.54	RIM	EX 697.11 15° S, EX 697.11 15° N



BEGIN IMPROVEMENTS
S. MICHIGAN AVENUE
STA 10+03

MANHOLE RESTRICTOR

EXISTING C ELEVATION
PROPOSED C ELEVATION

710	705	700	695	690	685
10+00	10+50	11+00	11+50	12+00	12+50
13+00	13+50	14+00	14+50		

BAXTER & WOODMAN
Consulting Engineers

DESIGNED - JDM	REVISED - 04-07-16
DRAWN - MAC	REVISED - ADDENDUM 1 12-05-16
CHECKED - TMS	REVISED -
DATE - 10-18-16	FILE - 131011SHT-DUI1.dgn

VILLAGE OF VILLA PARK, ILLINOIS
SOUTH MICHIGAN AVENUE

DRAINAGE AND UTILITIES

SCALE: H: 1"=20' V: 1"=5'
STA. 9+91 TO STA. 14+50

F.A. RTE.	SECTION	COUNTY	TOTAL SHEETS	SHEET NO.
N/A	N/A	DUPAGE	39	16
CONTRACT NO.				
FED. ROAD DIST. NO. 1 ILLINOIS FED. AID PROJECT				

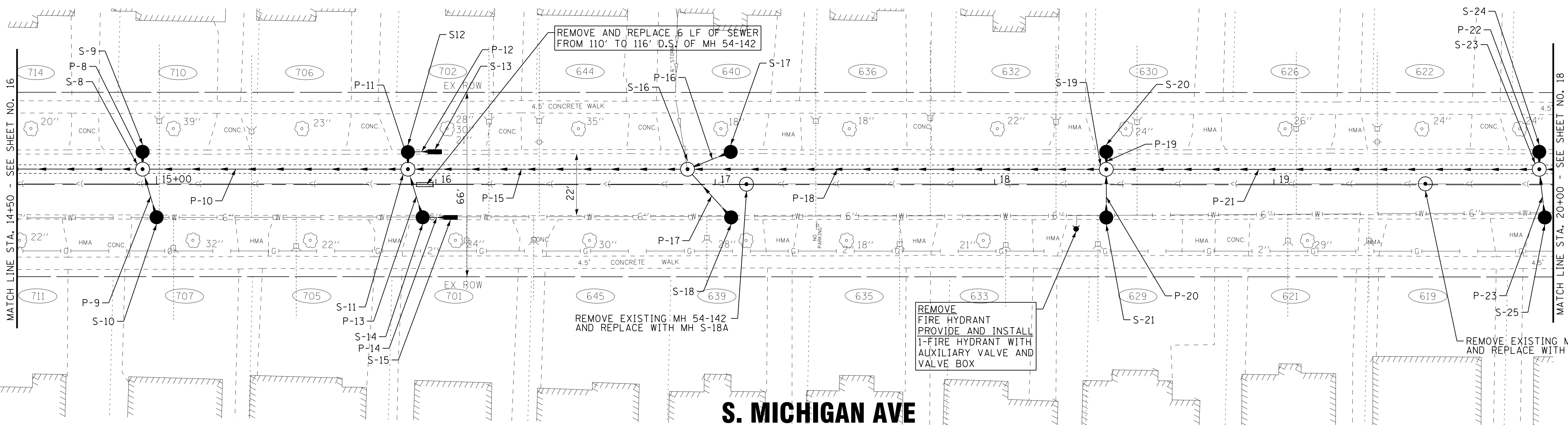
COPYRIGHT © 2016 BY BAXTER & WOODMAN, INC.
 STATE OF ILLINOIS PROFESSIONAL ENGINEERING LICENSE NO. 194-00121 - EXPIRES 4/30/2017
 I:\CrystalLake\131011\South Michigan Ave\Drawings\131011SHT-DUI1.dgn
 4/23/2016 4:02:09 PM 560K

STORM STRUCTURES

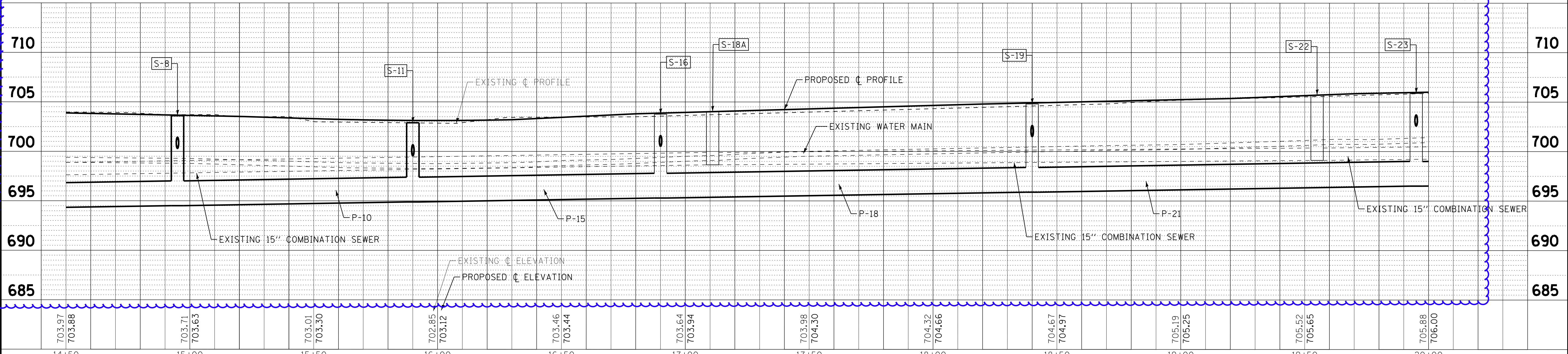
LABEL	STATION	OFFSET (FT)	TYPE	FRAME	ELEVATION	RIM/EOP	INVERTS
S-8	14+95	5.5	LT	MANHOLES TYPE A, 5' DIA	TY 1 CL	703.55	RIM 694.51 30" S, 694.51 30" N, 700.43 12" W, 700.29 12" E
S-9	14+95	11.0	LT	CATCH BASIN TYPE C	T-11 F&G	703.44	EOP 700.49 12" E
S-10	15+00	11.0	RT	CATCH BASIN TYPE C	T-11 F&G	703.41	EOP 700.47 12" E
S-11	15+90	5.5	LT	MANHOLES TYPE A, 5' DIA	TY 1 CL	702.97	RIM 394.89 30" S, 694.89 30" N, 699.67 12" W, 699.55 12" E
S-12	15+90	11.0	LT	CATCH BASIN TYPE C	T-11 F&G	702.86	EOP 699.73 12" E, 699.73 12" N
S-13	16+00	11.0	LT	INLET TYPE A	T-11 F&G	702.86	EOP 699.83 12" S
S-14	15+95	11.0	RT	CATCH BASIN TYPE C	T-11 F&G	702.86	EOP 699.73 12" W, 699.73 12" N
S-15	16+05	11.0	RT	INLET TYPE A	T-11 F&G	702.87	EOP 699.83 12" S
S-16	16+90	5.5	LT	MANHOLES TYPE A, 5' DIA	TY 1 CL	703.76	RIM 695.29 30" S, EX 695.29 30" N, 700.60 12" NW, 700.53 12" NE
S-17	17+06	11.0	LT	CATCH BASIN TYPE C	T-11 F&G	703.77	EOP 700.77 12" SE
S-18	17+06	11.0	RT	CATCH BASIN TYPE C	T-11 F&G	703.77	EOP 700.77 12" SW
S-18A	17+11	0.0	CL	SAN MANHOLES TYPE A, 4' DIA	TY 1 CL	704.02	RIM EX 698.65 15" S, EX 698.65 15" N
S-19	18+40	5.5	LT	MANHOLES TYPE A, 5' DIA	TY 1 CL	704.80	RIM 695.89 30" S, 695.89 30" N, 701.63 12" W, 701.51 12" E
S-20	18+40	11.0	LT	CATCH BASIN TYPE C	T-11 F&G	704.69	EOP 701.69 12" E
S-21	18+40	11.0	RT	CATCH BASIN TYPE C	T-11 F&G	704.69	EOP 701.69 12" W
S-22	19+55	0.0	CL	SAN MANHOLES TYPE A, 4' DIA	TY 1 CL	705.70	RIM EX 699.11 15" S, EX 699.11 15" N
S-23	19+95	5.5	LT	MANHOLES TYPE A, 5' DIA	TY 1 CL	705.87	RIM 696.51 30" S, 696.51 30" N, 702.70 12" W, 702.58 12" E
S-24	19+95	11.0	LT	CATCH BASIN TYPE C	T-11 F&G	705.76	EOP 702.76 12" E
S-25	19+97	11.0	RT	CATCH BASIN TYPE C	T-11 F&G	705.76	EOP 702.76 12" W

STORM PIPES

NO.	TYPE	TY	DIA (IN)	LENGTH (FT)	SLOPE	TBF (CU YD)
P-8	STORM SEWERS, RUBBER GASKET, CLASS A	1	12	6	1.00%	1.4
P-9	STORM SEWERS (WATER MAIN QUALITY)	1	12	18	1.00%	4.5
P-10	STORM SEWERS, RUBBER GASKET, CLASS A	2	30	95	0.40%	133.5
P-11	STORM SEWERS, RUBBER GASKET, CLASS A	1	12	6	1.00%	1.5
P-12	STORM SEWERS, RUBBER GASKET, CLASS A	1	12	10	1.00%	2.5
P-13	STORM SEWERS (WATER MAIN QUALITY)	1	12	18	1.00%	4.8
P-14	STORM SEWERS (WATER MAIN QUALITY)	1	12	10	1.00%	2.5
P-15	STORM SEWERS, RUBBER GASKET, CLASS A	2	30	100	0.40%	145.0
P-16	STORM SEWERS, RUBBER GASKET, CLASS A	1	12	17	1.00%	4.2
P-17	STORM SEWERS (WATER MAIN QUALITY)	1	12	24	1.00%	6.0
P-18	STORM SEWERS, RUBBER GASKET, CLASS A	2	30	150	0.40%	231.2
P-19	STORM SEWERS, RUBBER GASKET, CLASS A	1	12	6	1.00%	1.5
P-20	STORM SEWERS (WATER MAIN QUALITY)	1	12	18	1.00%	4.5
P-21	STORM SEWERS, RUBBER GASKET, CLASS A	2	30	155	0.40%	252.8
P-22	STORM SEWERS, RUBBER GASKET, CLASS A	1	12	6	1.00%	1.5
P-23	STORM SEWERS (WATER MAIN QUALITY)	1	12	18	1.00%	4.5



S. MICHIGAN AVE



COPYRIGHT © 2016 BY BAXTER & WOODMAN, INC.
 STATE OF ILLINOIS PROFESSIONAL ENGINEERING LICENSE NO. 194-001021 - EXPIRES 4/30/2017
 PROJECT: VILPA\31011SHT-South Michigan Ave\cadd\Drawings\31011SHT-DU2.dgn
 4/24/16

BAXTER & WOODMAN Consulting Engineers	DESIGNED - JDM	REVISED - ADDENDUM 1 12-5-16	F.A. RTE. SECTION COUNTY TOTAL SHEETS SHEET NO. N/A N/A DuPAGE 39 17 CONTRACT NO.
	DRAWN - MAC	REVISED -	
	CHECKED - TMS	REVISED -	
	DATE - 10-18-16	FILE - 131011SHT-DU2.dgn	

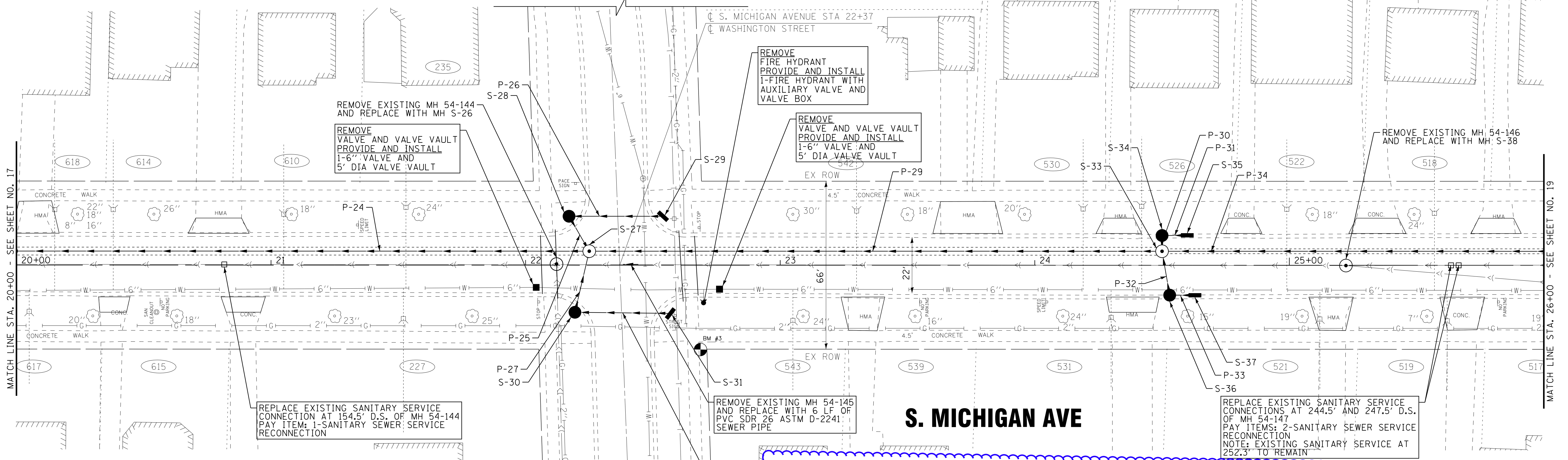
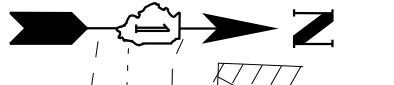
VILLAGE OF VILLA PARK, ILLINOIS
SOUTH MICHIGAN AVENUE

DRAINAGE AND UTILITIES

SCALE: H: 1"=20' V: 1"=5' STA. 14+50 TO STA. 20+00

FED. ROAD DIST. NO. 1 ILLINOIS FED. AID PROJECT

WASHINGTON ST

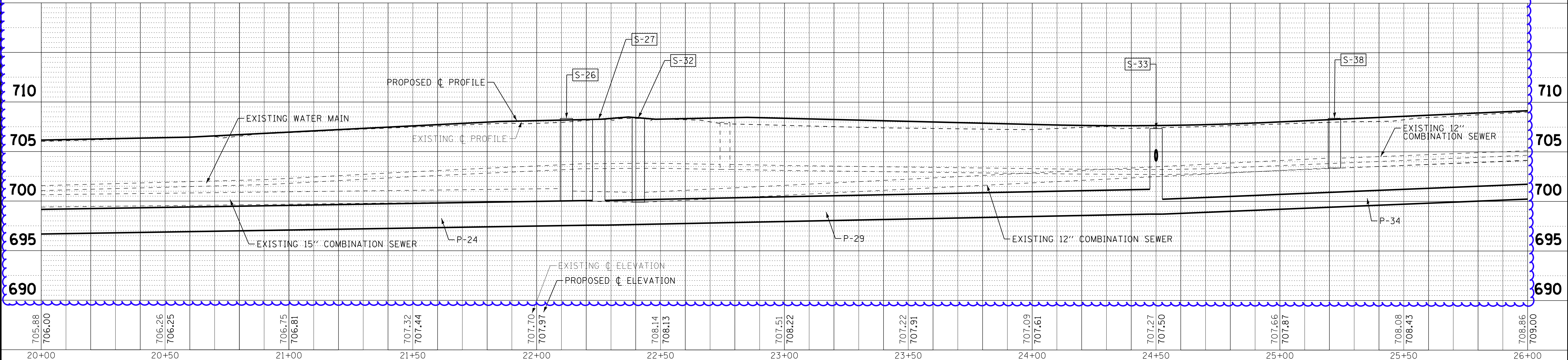


STORM PIPES

NO.	TYPE	TY	DIA (IN)	LENGTH (FT)	SLOPE	TBF (CU YD)
P-24	STORM SEWERS, RUBBER GASKET, CLASS A	2	30	230	0.40%	428.9
P-25	STORM SEWERS, RUBBER GASKET, CLASS A	1	12	16	1.50%	4.3
P-26	STORM SEWERS, RUBBER GASKET, CLASS A	1	12	37	0.51%	8.7
P-27	STORM SEWERS (WATER MAIN QUALITY)	1	12	25	1.16%	7.0
P-28	STORM SEWERS (WATER MAIN QUALITY)	1	12	37	0.51%	8.7
P-29	STORM SEWERS, RUBBER GASKET, CLASS A	2	30	225	0.50%	397.4
P-30	STORM SEWERS, RUBBER GASKET, CLASS A	1	12	6	1.00%	1.5
P-31	STORM SEWERS, RUBBER GASKET, CLASS A	1	12	10	1.00%	2.4
P-32	STORM SEWERS (WATER MAIN QUALITY)	1	12	18	1.00%	4.6
P-33	STORM SEWERS (WATER MAIN QUALITY)	1	12	10	1.00%	2.5
P-34	STORM SEWERS, RUBBER GASKET, CLASS A	2	18	155	1.00%	218.9

STORM STRUCTURES

LABEL	STATION	OFFSET (FT)	TYPE	FRAME	ELEVATION	RIM/EOP	INVERTS
S-26	22+12	0.0	CL SAN MANHOLES TYPE A, 4' DIA	TY 1 CL	708.18	RIM	EX 699.87 15" S, EX 699.87 12" N
S-27	22+25	5.5	LT MANHOLES TYPE A, 5' DIA	TY 1 CL	708.17	RIM	697.43 30" S, 697.43 30" N, 704.65 12" SW, 704.44 12" SE
S-28	22+17	19.0	LT CATCH BASIN TYPE A, 4' DIA	T-11 F&G	707.97	EOP	704.89 12" NE, 704.89 12" N
S-29	22+55	19.0	LT INLET TYPE A	T-11 F&G	708.08	EOP	705.08 12" S
S-30	22+19	19.0	RT CATCH BASIN TYPE A, 4' DIA	T-11 F&G	707.81	EOP	704.73 12" NW, 704.73 12" N
S-31	22+56	19.0	RT INLET TYPE A	T-11 F&G	707.92	EOP	704.92 12" S
S-32			NOT USED				
S-33	24+50	5.5	LT MANHOLES TYPE A, 5' DIA	TY 1 CL	707.30	RIM	698.56 30" S, 698.56 18" N, 704.05 12" W, 703.93 12" E
S-34	24+50	11.0	LT CATCH BASIN TYPE C	T-11 F&G	707.19	EOP	704.11 12" E, 704.11 12" N
S-35	24+60	11.0	LT INLET TYPE A	T-11 F&G	707.23	EOP	704.21 12" S
S-36	24+53	11.0	RT CATCH BASIN TYPE C	T-11 F&G	707.20	EOP	704.11 12" W, 704.11 12" N
S-37	24+63	11.0	RT INLET TYPE A	T-11 F&G	707.25	EOP	704.21 12" S
S-38	25+22	0.0	CL SAN MANHOLES TYPE A, 4' DIA	TY 1 CL	708.12	RIM	EX 703.21 12" S, EX 703.21 12" N, EX 703.21 12" NE



COPYRIGHT © 2016 BY BAXTER & WOODMAN, INC.
 STATE OF ILLINOIS PROFESSIONAL ENGINEERING LICENSE NO. 194-00121 - EXPIRES 4/30/2017
 PROJECT: VILLAGE OF VILLA PARK, SOUTH MICHIGAN AVENUE, ILLINOIS
 DRAWING: DRAINAGE AND UTILITIES, SOUTH MICHIGAN AVENUE, ILLINOIS
 DATE: 12/5/2016 4:02:35 PM



DESIGNED - JDM	REVISED - ADDENDUM 1 12-5-16
DRAWN - MAC	REVISED -
CHECKED - TMS	REVISED -
DATE - 10-18-16	FILE - 131011SHT-DU3.dgn

**VILLAGE OF VILLA PARK, ILLINOIS
SOUTH MICHIGAN AVENUE**

DRAINAGE AND UTILITIES

SCALE: H: 1"=20' V: 1"=5' STA. 20+00 TO STA. 26+00

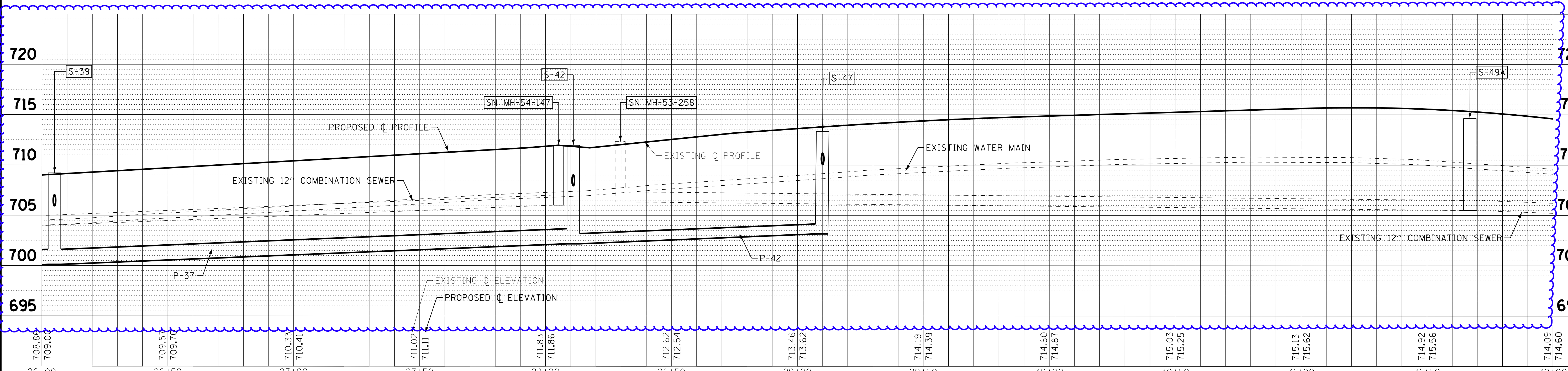
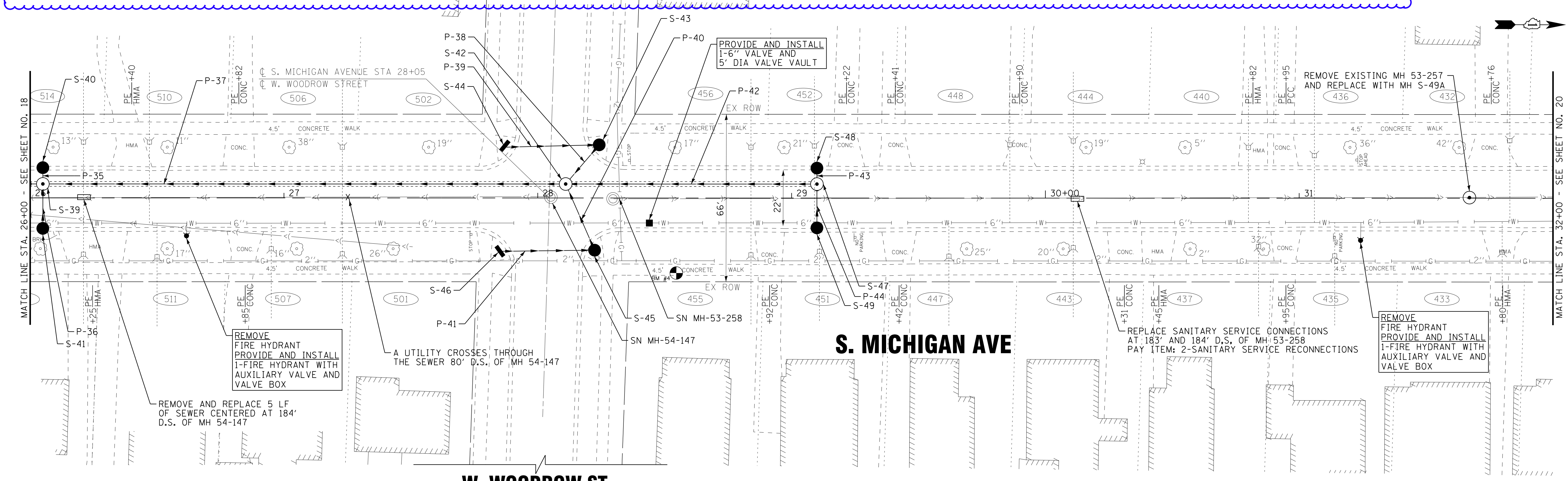
F.A. R.T.E.	SECTION	COUNTY	TOTAL SHEETS	SHEET NO.
N/A	N/A	DUPAGE	39	18
CONTRACT NO.				
FED. ROAD DIST. NO. 1 ILLINOIS FED. AID PROJECT				

STORM PIPES

NO.	TYPE	TY	DIA (IN)	LENGTH (FT)	SLOPE	TBF (CU YD)
P-35	STORM SEWERS, RUBBER GASKET, CLASS A	1	12	6	1.00%	1.3
P-36	STORM SEWERS (WATER MAIN QUALITY)	1	12	18	1.00%	4.1
P-37	STORM SEWERS, RUBBER GASKET, CLASS A	2	18	206	1.00%	305.9
P-38	STORM SEWERS, RUBBER GASKET, CLASS A	1	12	20	1.00%	6.2
P-39	STORM SEWERS, RUBBER GASKET, CLASS A	1	12	37	0.51%	10.3
P-40	STORM SEWERS (WATER MAIN QUALITY)	1	12	28	1.00%	9.0
P-41	STORM SEWERS (WATER MAIN QUALITY)	1	12	37	0.51%	10.3
P-42	STORM SEWERS, RUBBER GASKET, CLASS A	2	12	99	1.00%	150.0
P-43	STORM SEWERS, RUBBER GASKET, CLASS A	1	12	6	1.00%	1.7
P-44	STORM SEWERS (WATER MAIN QUALITY)	1	12	18	1.00%	5.2

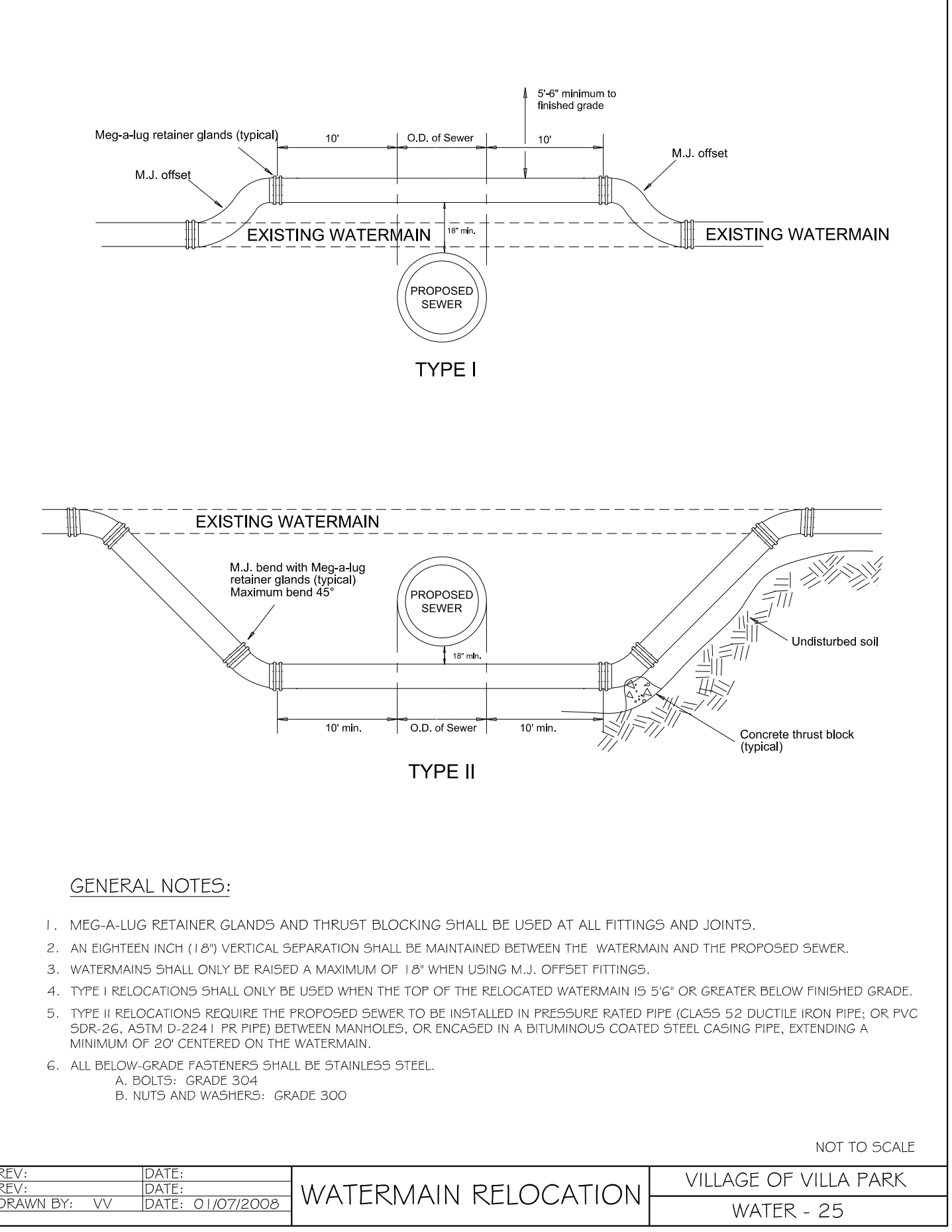
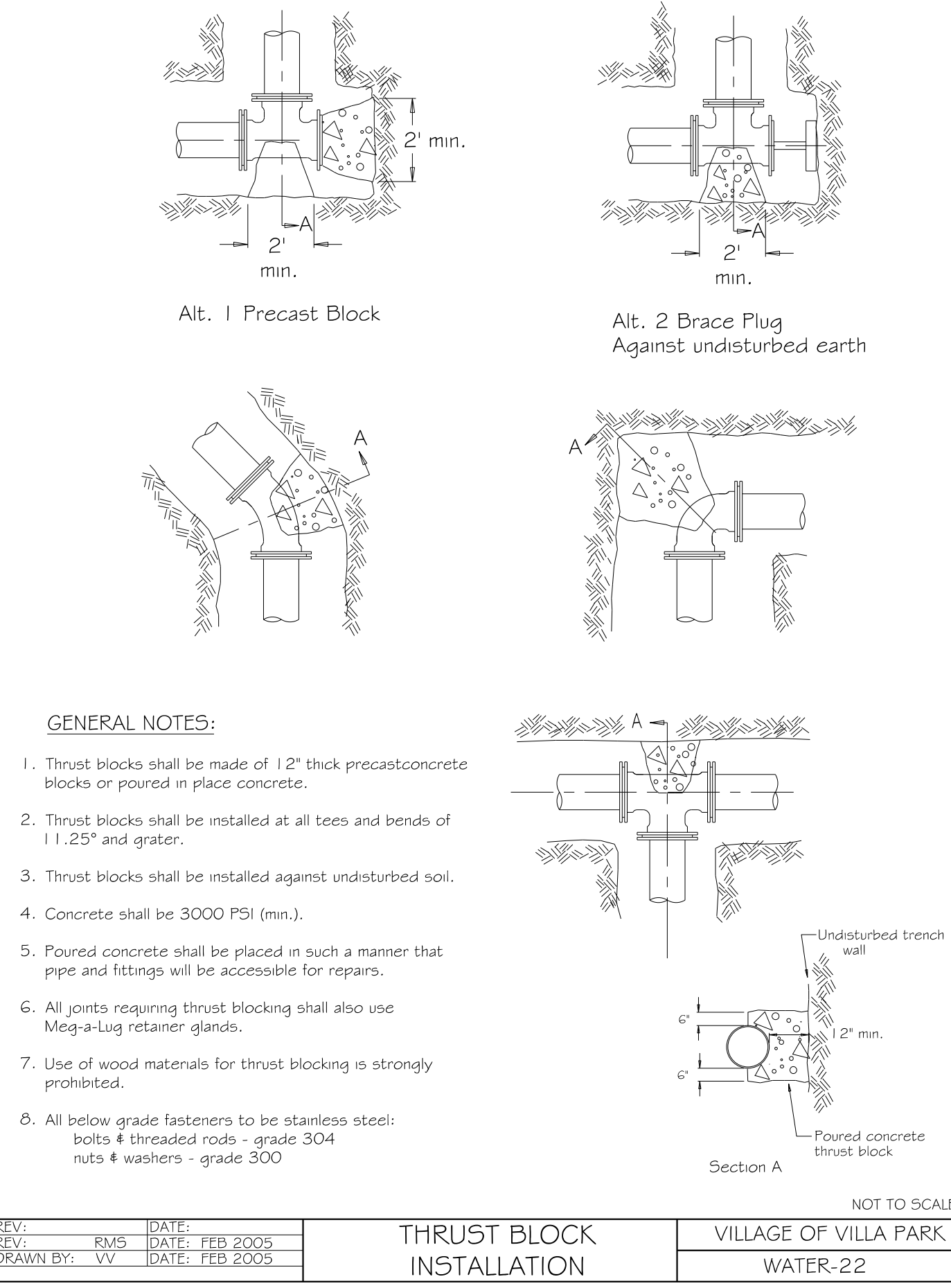
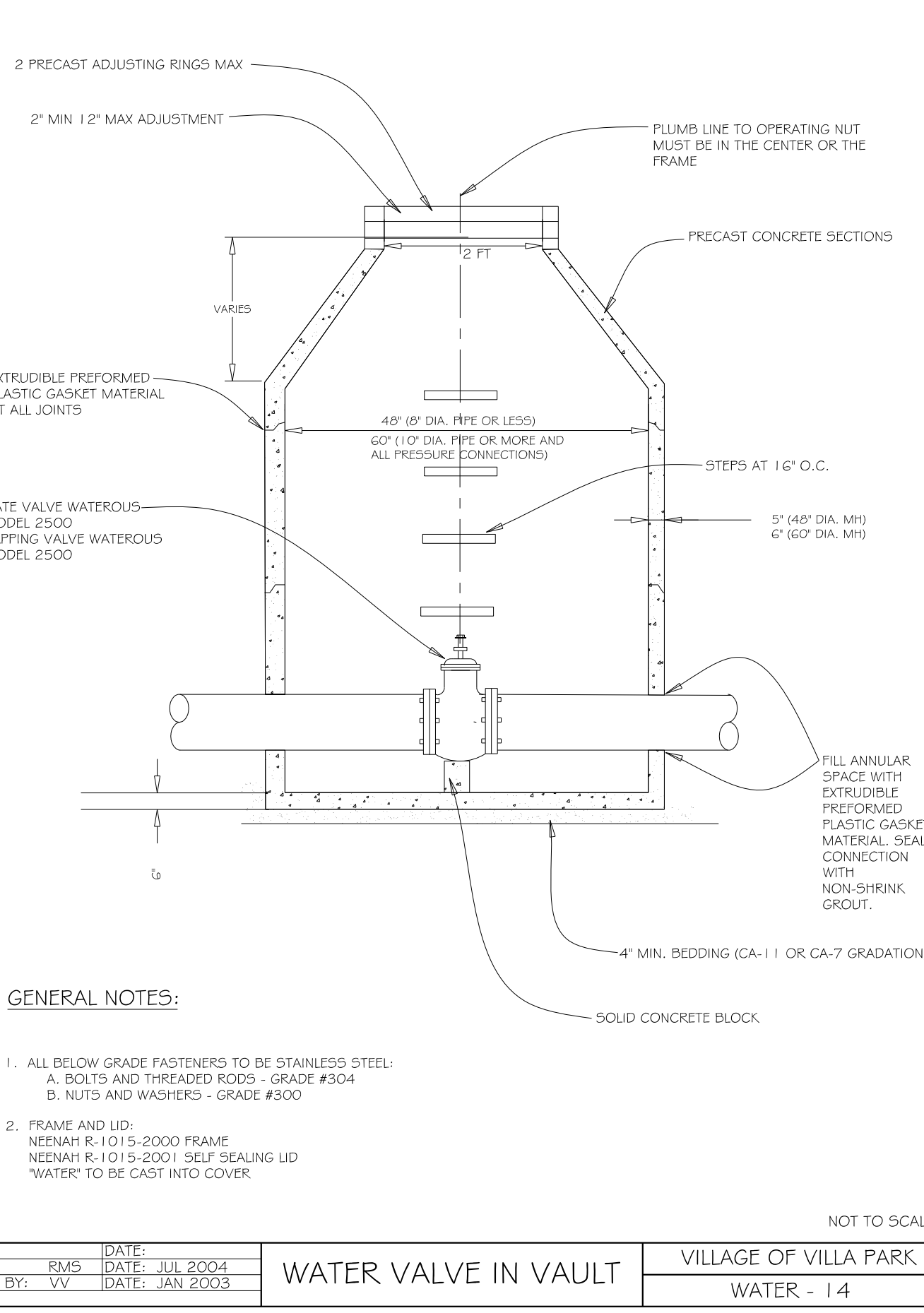
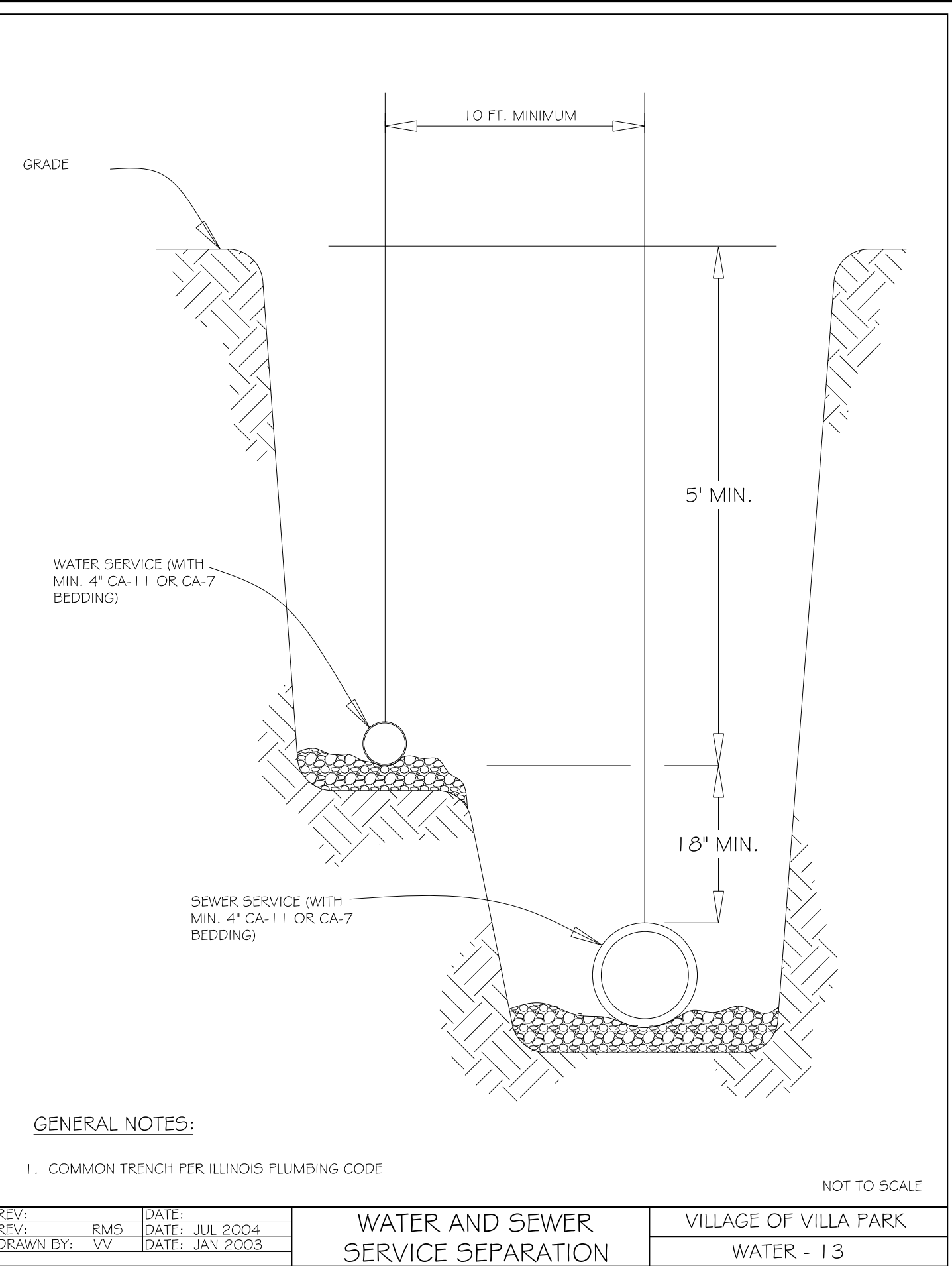
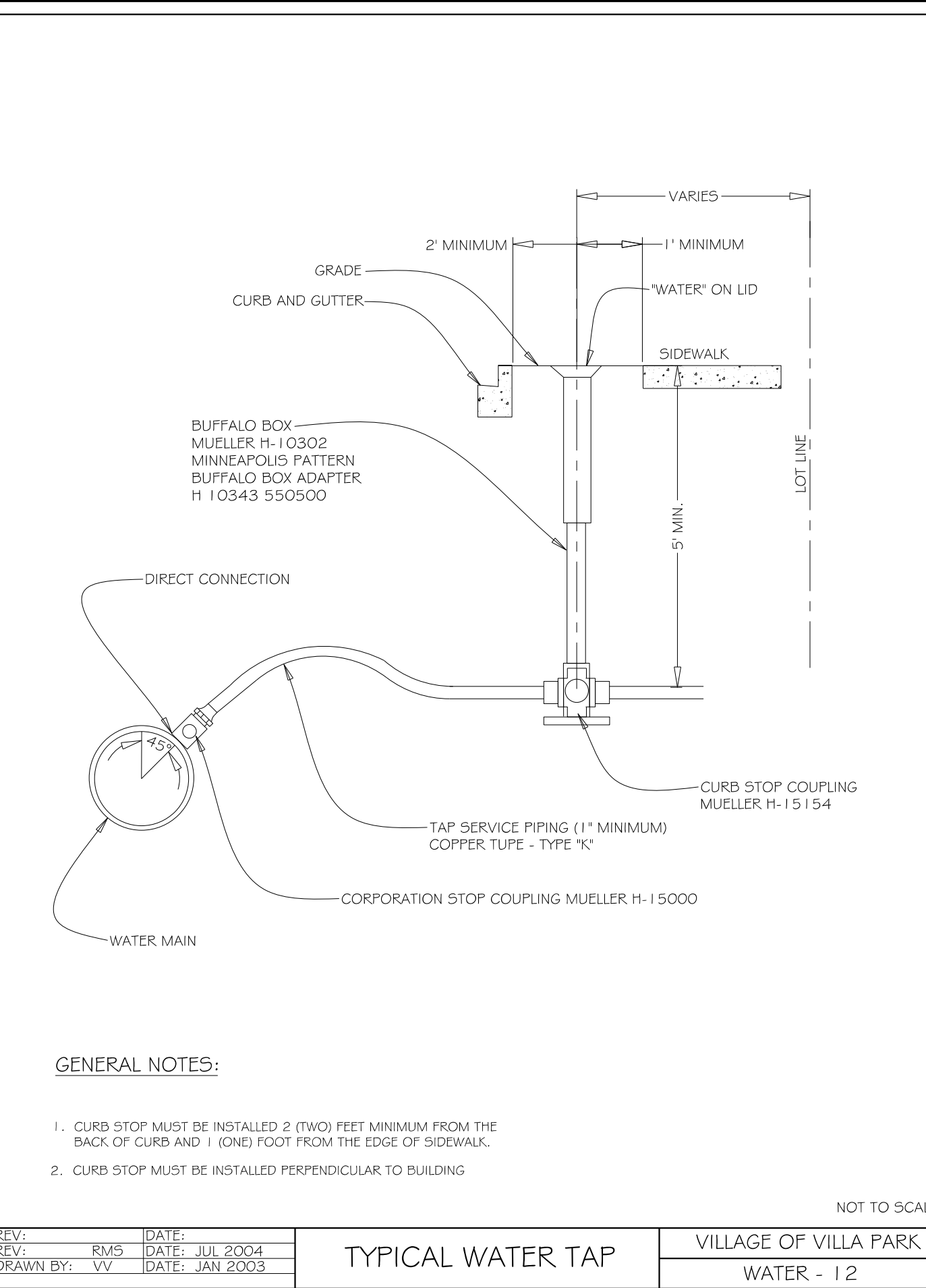
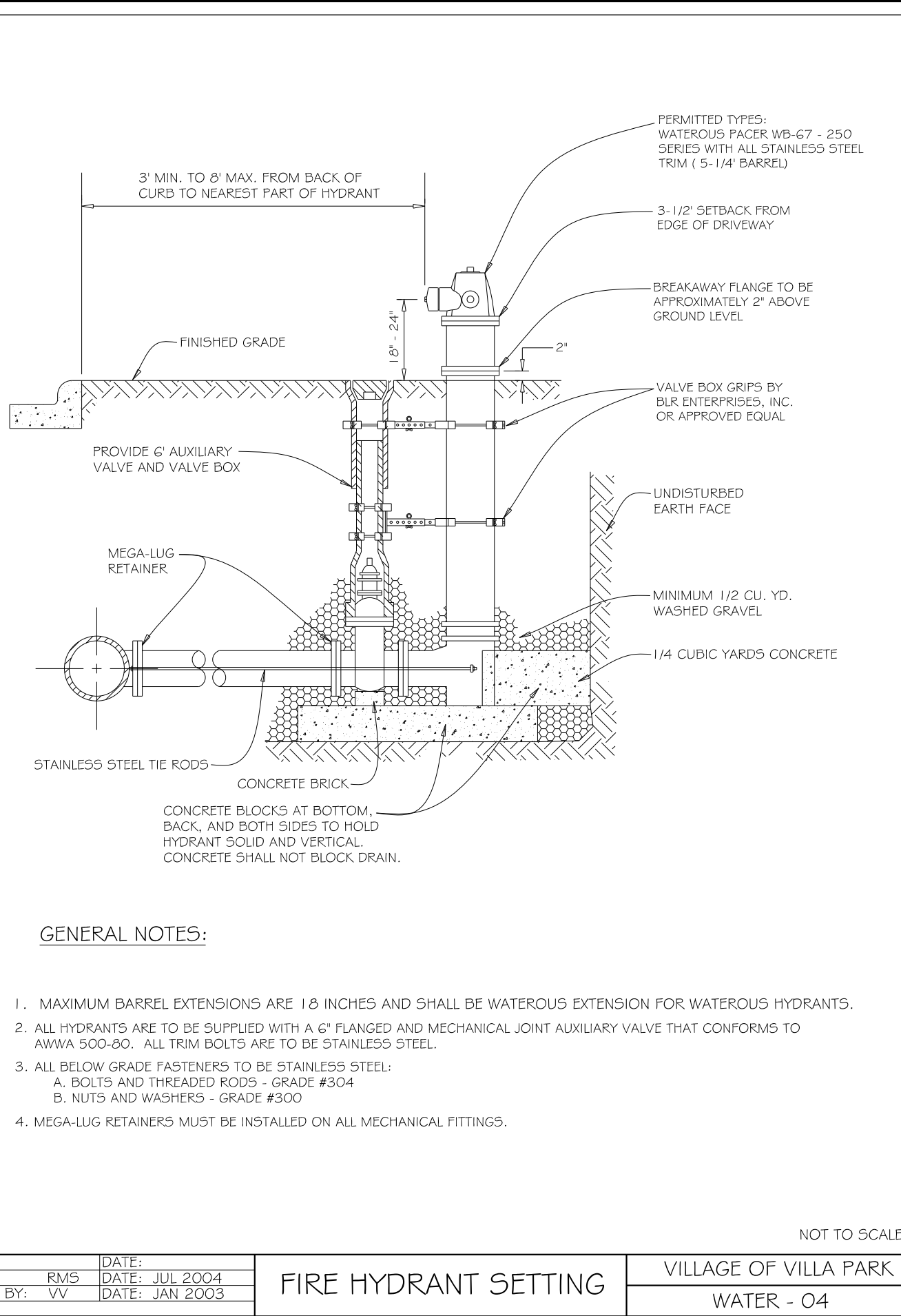
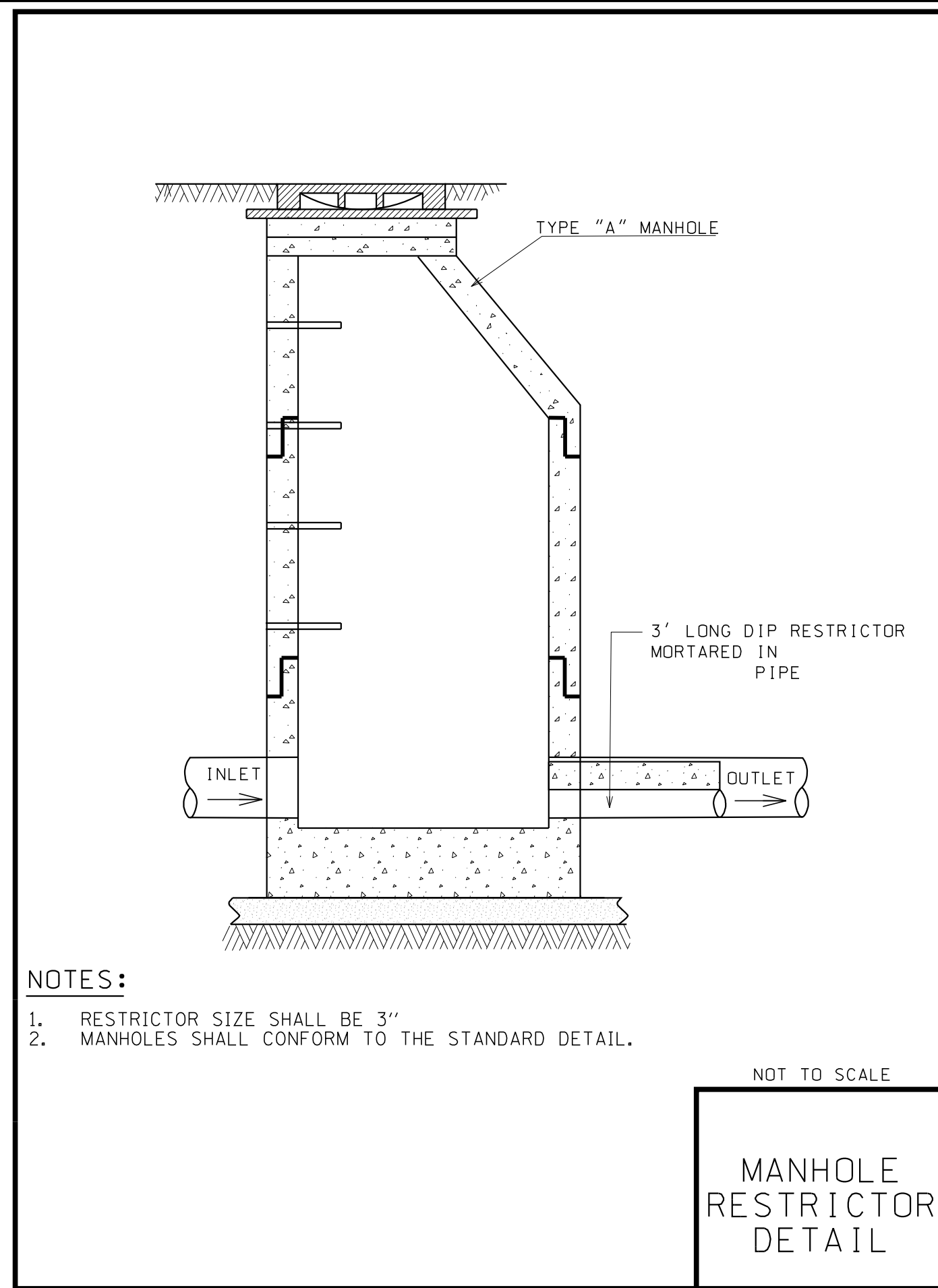
STORM STRUCTURES

LABEL	STATION	OFFSET (FT)	TYPE	FRAME	ELEVATION	RIM/EOP	INVERTS
S-39	26+05	5.5	LT	MANHOLES TYPE A, 4' DIA	TY 1 CL	708.96	RIM 700.11 18" S, 700.11 18" N, 708.03 12" W, 705.91 12" E
S-40	26+05	11.0	LT	CATCH BASIN TYPE C	T-11 F&G	708.85	EOP 708.09 12" E
S-41	26+05	11.0	RT	CATCH BASIN TYPE C	T-11 F&G	708.85	EOP 708.09 12" W
S-42	28+11	5.5	LT	MANHOLES TYPE A, 4' DIA	TY 1 CL	711.78	RIM 702.17 18" S, 702.17 12" N, 708.01 12" NW, 707.93 12" NE
S-43	28+23	20.0	LT	CATCH BASIN TYPE A, 4' DIA	T-11 F&G	712.06	EOP 708.30 12" SE, 708.30 12" S
S-44	27+87	20.0	LT	INLET TYPE A	T-11 F&G	711.49	EOP 708.49 12" N
S-45	28+22	20.0	RT	CATCH BASIN TYPE A, 4' DIA	T-11 F&G	711.98	EOP 708.21 12" SW, 708.21 12" S
S-46	27+86	20.0	RT	INLET TYPE A	T-11 F&G	711.40	EOP 708.40 12" N
S-47	29+10	5.5	LT	MANHOLES TYPE A, 4' DIA	TY 1 CL	713.68	RIM 703.16 12" S, 710.18 12" W, 710.06 12" E
S-48	29+10	11.0	LT	CATCH BASIN TYPE C	T-11 F&G	713.57	EOP 710.24 12" E
S-49	29+10	11.0	RT	CATCH BASIN TYPE C	T-11 F&G	713.57	EOP 710.24 12" W
S-49A	31+67	0.0	CL	SAN MANHOLES TYPE A, 4' DIA	TY 1 CL	715.33	RIM EX 705.50 12" S, EX 705.50 12" N



COPYRIGHT © 2016 BY BAXTER & WOODMAN, INC.
 STA: 10111SHT-DU4.dgn
 LICENSE NO. 184-00121 - EXPIRES 4/30/2017
 12/5/2016 4:02:44 PM
 I:\CrystalLake\131011SHT-South Michigan Ave\cadd\Drawings\131011SHT-DU4.dgn

BAXTER & WOODMAN Consulting Engineers	DESIGNED - JDM	REVISED - ADDENDUM 1 12-5-16	VILLAGE OF VILLA PARK, ILLINOIS SOUTH MICHIGAN AVENUE	DRAINAGE AND UTILITIES	F.A. RTÉ.	SECTION	COUNTY	TOTAL SHEETS	SHEET NO.
	DRAWN - MAC	REVISED -			N/A	N/A	DUPAGE	39	19
CHECKED - TMS	REVISED -				CONTRACT NO.		FED. ROAD DIST. NO. 1 ILLINOIS FED. AID PROJECT		
DATE - 10-18-16	FILE - 131011SHT-DU4.dgn				SCALE: H: 1"=20' V: 1"=5'	STA. 26+00	TO STA. 32+00		



COPYRIGHT © 2016 BY BAXTER & WOODMAN, INC.
STATE OF ILLINOIS - PROFESSIONAL DESIGN FIRM
LICENSE NO. - 184-00123 - EXPIRES 4/30/2017
12/5/2016
I:\CrystalLake\WLPK\131011SHT-South Michigan Ave\cadd\Drawings\131011SHT-Misc Details.dgn



DESIGNED - TMS	REVISED - ADDENDUM 1 12-5-16
DRAWN - MAC	REVISED -
CHECKED - JJF	REVISED -
DATE - 10-18-16	FILE - 131011SHT-Misc Details.dgn

**VILLAGE OF VILLA PARK, ILLINOIS
SOUTH MICHIGAN AVENUE**

MISCELLANEOUS DETAILS

SCALE: STA. TO STA.

F.A. RTE.	SECTION	COUNTY	TOTAL SHEETS	SHEET NO.
N/A	N/A	DuPAGE	39	27
CONTRACT NO.				
FED. ROAD DIST. NO. 1 ILLINOIS FED. AID PROJECT				