

VILLAGE OF VILLA PARK, ILLINOIS

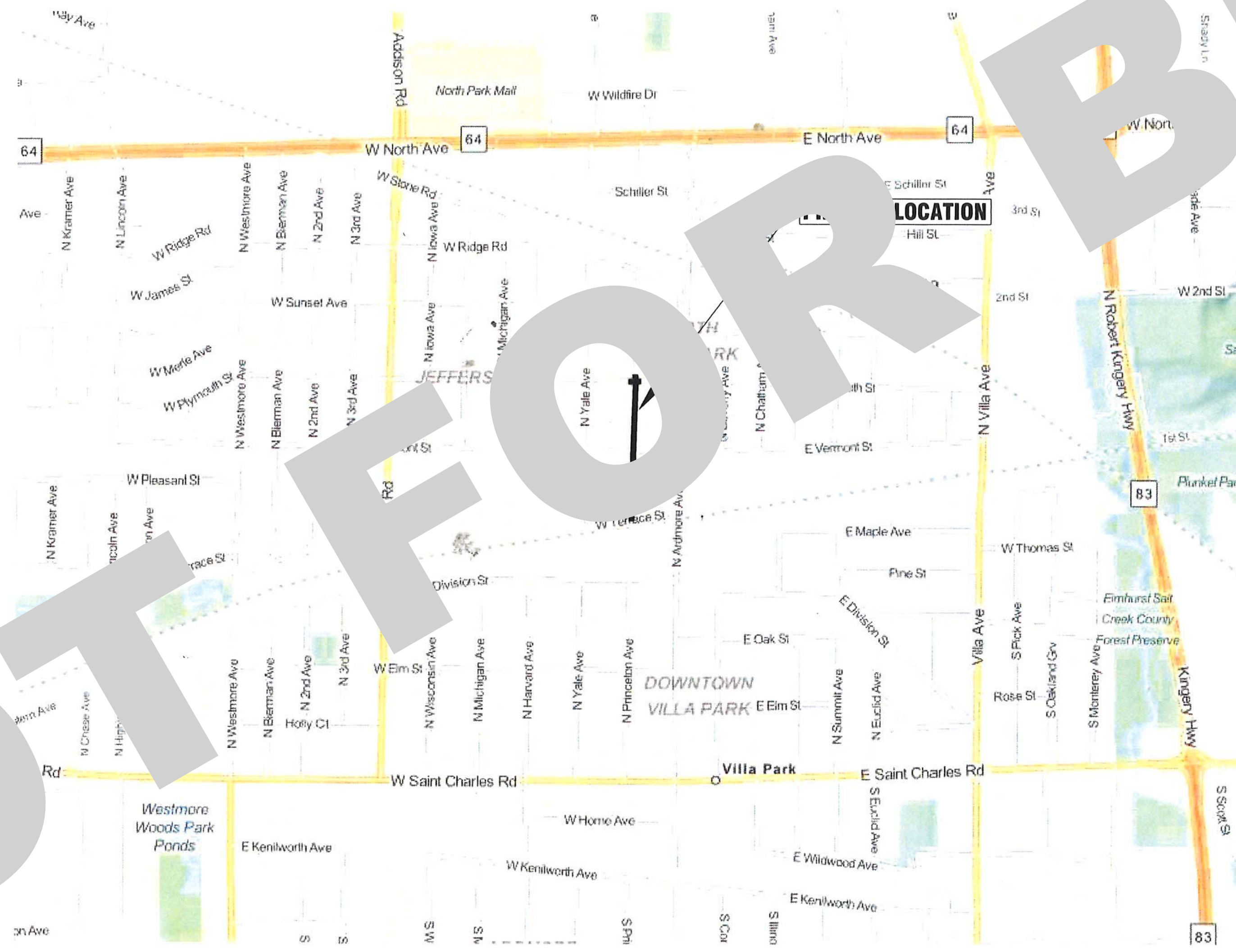
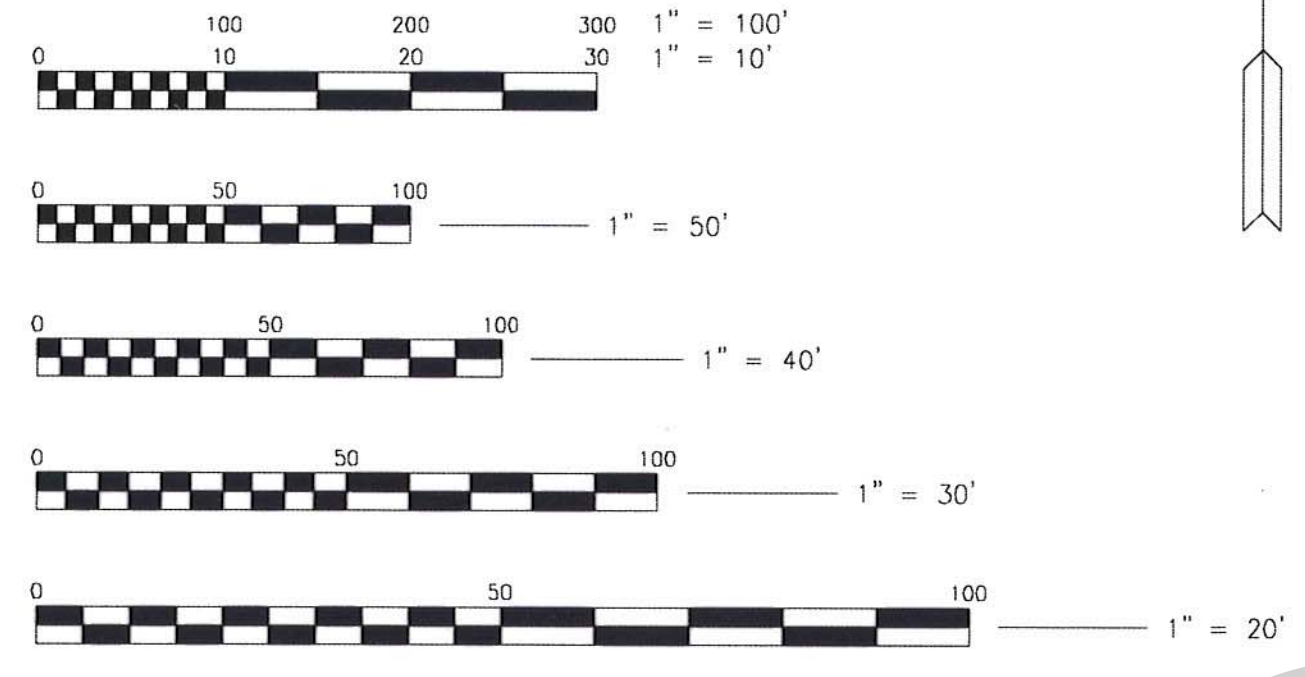
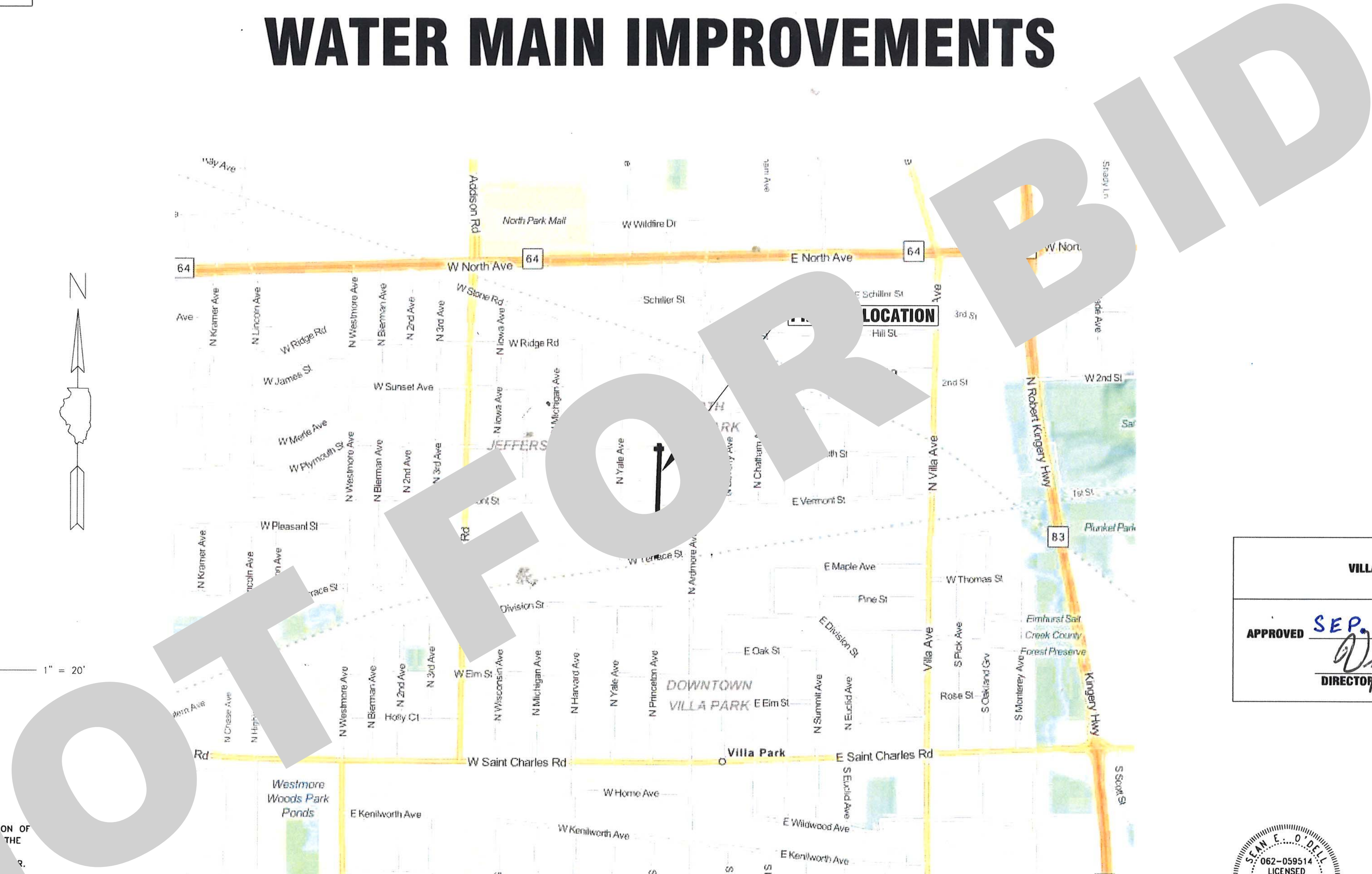
N. PRINCETON AVENUE

WATER MAIN IMPROVEMENTS

F.A. ROUTE NO.	SECTION	COUNTY	TOTAL SHEETS	SHEET NO.
			8	1

ILLINOIS PROJECT

FOR INDEX OF SHEETS, SEE SHEET NO. 2



VICINITY MAP

FULL SIZE PLANS HAVE BEEN PREPARED USING STANDARD ENGINEERING SCALES. REDUCED SIZED PLANS WILL NOT CONFORM TO STANDARD SCALES. IN MAKING MEASUREMENTS ON REDUCED SIZE PLANS, THE ABOVE SCALES SHALL BE USED.

EXISTING UTILITIES:
 WHERE THE DRAWINGS INCLUDE INFORMATION PERTAINING TO THE LOCATION OF UNDERGROUND UTILITY FACILITIES, SUCH AS REPRESENTED BY THE OPINION OF THE ENGINEER AS TO THE LOCATION OF SUCH UTILITIES, INFORMATION IS INCLUDED ONLY FOR INFORMATIONAL PURPOSES. THE UTILITY LOCATIONS WERE DETERMINED FROM RECORDS. THE ENGINEER AND OWNER MAKE NO WARRANTY WITH RESPECT TO THE SUFFICIENCY OR ACCURACY OF THE INFORMATION SHOWN ON THE DRAWINGS REGARDING THE LOCATION OF UNDERGROUND FACILITIES OR THE MANNER IN WHICH THEY ARE TO BE REMOVED OR ADJUSTED. IT SHALL BE THE CONTRACTOR'S RESPONSIBILITY TO DETERMINE THE ACTUAL LOCATION OF ALL SUCH FACILITIES. THE CONTRACTOR SHALL OBTAIN FROM THE RESPECTIVE UTILITY COMPANY ALL INFORMATION REGARDING THE LOCATION OF THE UTILITY FACILITIES AND THE WORKING SCHEDULES OF THE UTILITY COMPANIES FOR REMOVAL OR ADJUSTING THE FACILITIES.

VILLAGE OF VILLA PARK, ILLINOIS

APPROVED SEP. 11 2015
Dydas Juchelis
 DIRECTOR OF PUBLIC WORKS

STATE OF ILLINOIS
 LICENSED PROFESSIONAL ENGINEER
 OF
 STATE OF ILLINOIS
Stan Ford
 LICENSE EXPIRES 11-30-2015
 PROJECT MANAGER

Laura Schulz
 PROJECT ENGINEER



BAXTER WOODMAN

WWW.BAXTERWOODMAN.COM

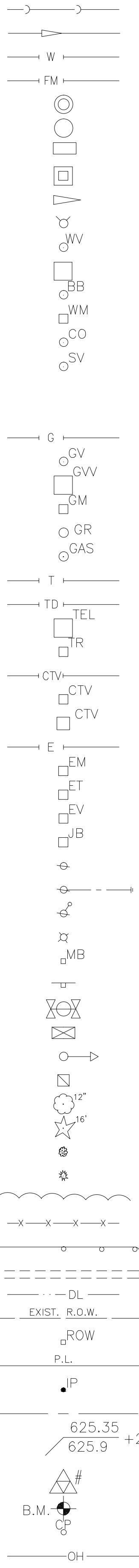
BAXTER & WOODMAN, INC.
 STATE OF ILLINOIS - PROFESSIONAL DESIGN FIRM
 LICENSE NO. - 184-001121 - EXPIRES 4/30/2017

PROJECT NO.: 141151 DATE: 8-25-15

I:\MOKENA\VLPK\141151-WATER MAIN DESIGN YEAR 1\CADD\141151-TOPO C30.DWG COVER
 Plotted: 9/2/2015 10:43 AM By: 382ABN

COPYRIGHT © 2015 BY BAXTER & WOODMAN, INC.
 ALL RIGHTS RESERVED. NO PART OF THESE DRAWINGS
 MAY BE REPRODUCED OR OTHERWISE REVISED WITHOUT
 WRITTEN PERMISSION OF BAXTER & WOODMAN, INC.

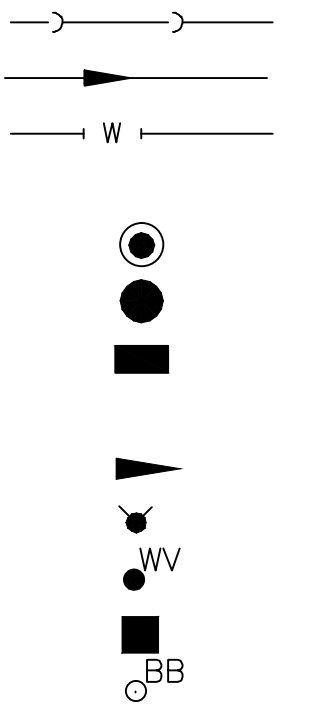
EXISTING



LEGEND

SANITARY SEWER OR SERVICE
 STORM SEWER OR SERVICE
 WATER MAIN OR SERVICE
 FORCE MAIN
 MANHOLE
 CATCH BASIN
 INLET
 DRYWELL
 CULVERT END SECTION
 FIRE HYDRANT WITH AUX. VALVE AND BOX
 WATER VALVE W/ BOX AND COVER
 WATER VALVE VAULT
 WATER SERVICE BOX OR CURB STOP
 WATER METER
 CLEAN OUT
 SEPTIC VENT
 TO BE ABANDONED AND/OR REMOVED
 STRUCTURE TO BE ABANDONED
 GAS LINE
 GAS VALVE W/ BOX AND COVER
 GAS VALVE VAULT
 GAS METER
 GAS RISER
 GAS SERVICE VALVE
 TELEPHONE CABLE
 TELEPHONE DUCT
 TELEPHONE VAULT
 TELEPHONE RISER
 CABLE TELEVISION (BURIED)
 CABLE T.V. RISER
 CABLE T.V. VAULT
 UNDERGROUND ELECTRICAL
 ELECTRIC METER
 PAD MOUNTED TRANSFORMER
 ELECTRIC VAULT
 JUNCTION BOX
 UTILITY POLE
 UTILITY POLE w/ GUY ANCHOR
 UTILITY POLE w/ LIGHT
 LIGHT STANDARD
 MAIL BOX
 STREET SIGN
 RAILROAD SIGNAL
 TRAFFIC SIGNAL CONTROLLER
 TRAFFIC SIGNAL POST W/ SIGNAL HEAD
 HANDHOLE
 DECIDUOUS TREE (W/ TRUNK INCH DIA.)
 CONIFEROUS TREE (W/ HEIGHT)
 DECIDUOUS BUSH
 CONIFEROUS BUSH
 DEFINING EDGE OF BRUSH OR FORESTED AREA
 FENCE
 GUARD RAIL
 CULVERT (CMP UNLESS NOTED)
 DITCH
 RIGHT OF WAY (ROW)
 RIGHT OF WAY MONUMENT
 UNFENCED PROPERTY LINE
 IRON PIPE (PROPERTY CORNER)
 CENTER LINE
 PROPOSED EL./EXISTING EL. and STATION
 SOIL BORING AND NUMBER
 BENCH MARK
 SURVEY CONTROL POINT
 OVERHEAD ELECTRICAL

PROPOSED



CONC PORTLAND CEMENT CONCRETE
 CL CENTERLINE
 BIT BITUMINOUS PAVEMENT
 GR GRAVEL
 CMP CORRUGATED METAL PIPE
 FH FIRE HYDRANT WITH AUX. VALVE AND BOX
 CI CAST IRON
 DI DUCTILE IRON
 F-F FACE-TO-FACE
 E-E EDGE-TO-EDGE
 B-B BACK-TO-BACK
 BM BENCH MARK
 INV EL INVERT ELEVATION
 CL EL CENTERLINE ELEVATION
 P POINT
 G GUTTER
 C CURB
 C&G CURB AND GUTTER

ABBREVIATIONS

BC BACK OF CURB
 EOP EDGE OF PAVEMENT
 PL PROPERTY LINE
 ROW RIGHT OF WAY
 FL FLOW LINE
 TF TOP OF FRAME
 TC TOP OF CURB OR CONCRETE
 R STRUCTURE TO BE RECONSTRUCTED
 A STRUCTURE TO BE ADJUSTED
 ▲ CENTRAL ANGLE
 D= DEGREE OF CURVE
 T= TANGENT LENGTH
 L= CURVE LENGTH
 R= RADIUS OF CURVE
 E= EXTERNAL DISTANCE
 SE= SUPERELEVATION (FT. PER FT. OF WIDTH)
 X= EXTERNAL DISTANCE OF VERTICAL CURVE
 PC POINT OF CURVATURE
 PI POINT OF INTERSECTION
 PT POINT OF TANGENCY
 POT POINT ON TANGENT
 PCC POINT OF COMPOUND CURVATURE
 PRC POINT OF REVERSE CURVE
 VC VERTICAL CURVE
 N&W NAIL AND WASHER
 TCE TEMPORARY CONSTRUCTION EASEMENT
 SS STORM SEWER
 SAN SEW SANITARY SEWER
 PROP PROPOSED
 STN STL STAINLESS STEEL
 RJT RESTRAINED JOINT
 HDD HORIZONTAL DIRECTIONALLY DRILLED
 LF LINEAR FEET

WATER MAIN NOTES

GENERAL NOTES

- ALL NOTES ON THE PLANS ARE THE RESPONSIBILITY OF THE CONTRACTOR TO COMPLY WITH, AND ALL ITEMS OF WORK LISTED IN THE NOTES ARE INCIDENTAL TO THE CONTRACT UNLESS SPECIFIED OTHERWISE
- THE CONTRACTOR SHALL NOTIFY THE VILLAGE A MINIMUM OF 48 HOURS PRIOR TO THE START OF CONSTRUCTION.
- THE CONTRACTOR SHALL PROVIDE CONTINUOUS ACCESS TO ALL ABUTTING PROPERTIES AND DRIVEWAYS THROUGH THE DURATION OF THE PROJECT EXCEPT FOR SHORT PERIODS OF TIME AS APPROVED BY THE ENGINEER. ACCESS TO ALL DRIVEWAYS SHALL BE RESTORED BY THE END OF THE WORKING DAY. ANY ROADWAY OR ACCESS CLOSURES SHALL ONLY TAKE PLACE DURING NORMAL WORKING HOURS.
- WATER SERVICE LOCATIONS, ROUTING, SIZE, AND TYPE OF REPLACEMENT WILL BE DETERMINED IN THE FIELD AT TIME OF CONSTRUCTION.
- COMPLETE ALL WORK IN ACCORDANCE WITH APPLICABLE SECTIONS OF THE STANDARD SPECIFICATIONS FOR WATER AND SEWER MAIN CONSTRUCTION IN ILLINOIS, LATEST REVISION.
- COORDINATE CLOSING OR OPENING OF WATER VALVES, AND SHUTTING DOWN OF WATER SUPPLY WITH THE VILLAGE'S WATER DEPARTMENT. ONLY VILLAGE STAFF ARE ALLOWED TO OPERATE EXISTING WATER VALVES.
- ALL DISTURBED LANDSCAPING AND LANDSCAPING APPURTENANCES (SUCH AS WALKWAYS, PATIOS, YARD DECORATIONS, ETC.) SHALL BE RESTORED TO ITS ORIGINAL CONDITION TO THE SATISFACTION OF THE VILLAGE. NO ADDITIONAL COMPENSATION FOR RESTORATION WILL BE ALLOWED OTHER THAN WHAT IS PAID FOR IN THE PAY ITEMS. NO COMPENSATION WILL BE ALLOWED FOR RESTORATION OF AREAS OUTSIDE OF THE PROJECT LIMITS.
- PRIOR TO THE START OF CONSTRUCTION, THE CONTRACTOR SHALL HAVE ALL UTILITIES LOCATED BY J.U.L.I.E.
- LOCATE ALL EXISTING UTILITIES PRIOR TO CONSTRUCTION. THE LOCATION OF EXISTING UTILITIES AS SHOWN ON THESE DRAWINGS ARE BASED ON INFORMATION SUPPLIED BY THE UTILITIES AND MAY NOT BE ACCURATE. WHERE CONFLICT EXISTS BETWEEN EXISTING UTILITIES AND THE PROPOSED UNDERGROUND PIPING REQUIRING A REVISION TO THE DRAWINGS, SUCH CONSTRUCTION SHALL NOT BE UNDERTAKEN UNTIL SUCH CHANGES ARE APPROVED BY THE ENGINEER. THE CONTRACTOR SHALL REPORT ALL SUCH CONFLICTS IMMEDIATELY TO THE ENGINEER.
- ALL TRENCHES IN ROADWAYS SHALL BE SAWCUT PRIOR TO EXCAVATION AND RESAWCUT TO PROVIDE A CLEAN EDGE PRIOR TO PAVEMENT RESTORATION.
- ALL TRENCHES SHALL BE BACKFILLED OR COVERED AT THE END OF EACH WORK DAY.
- CONCRETE THRUST BLOCKS ARE REQUIRED AT ALL CONNECTIONS TO EXISTING WATER MAINS.

VILLAGE OF VILLA PARK EROSION CONTROL NOTES

- THE GENERAL CONTRACTOR SHALL BE RESPONSIBLE FOR THE INSTALLATION OF ALL EROSION CONTROL DEVICES INCLUDING, BUT NOT LIMITED TO, FILTER FABRIC PROTECTORS IN ALL STORM MANHOLES AND/OR INLETS PER DETAILS.
- IF THERE IS NO GENERAL CONTRACTOR, IT SHALL BE THE RESPONSIBILITY OF THE EXCAVATION/GRADING CONTRACTOR TO INSTALL ALL SOIL EROSION CONTROL DEVICES.
- THE CONTRACTOR RESPONSIBLE FOR THE INSTALLATION OF THE EROSION CONTROL DEVICES SHALL MAKE AN INSPECTION OF THE INSTALLATION ON A WEEKLY BASIS OR FOLLOWING A RAINFALL. A RECORD OF SUCH INSPECTIONS SHALL BE KEPT ONSITE AT ALL TIMES UNTIL FINAL ACCEPTANCE OF THE WORK.
- IF ADDITIONAL EROSION CONTROL MEASURES NOT SHOWN ON THE PLANS ARE REQUIRED TO STOP OR PREVENT EROSION OR ARE REQUIRED BY ANY AUTHORITY HAVING JURISDICTION IT SHALL BE THE CONTRACTOR'S RESPONSIBILITY TO INSTALL SUCH REQUIRED DEVICES.
- SEE STANDARD VILLAGE OF VILLA PARK DETAILS FOR REQUIREMENTS.
- ALL STATE AND LOCAL EROSION CONTROL MEASURES SHALL BE IMPLEMENTED AND MAINTAINED THROUGHOUT CONSTRUCTION.

TRAFFIC CONTROL AND PROTECTION

- ALL TRAFFIC CONTROL NEEDED FOR CONSTRUCTION ARE TO BE FURNISHED BY THE CONTRACTOR.
- ANY EXISTING TRAFFIC REGULATORY AND STREET SIGNS WITHIN THE LIMITS OF CONSTRUCTION SHALL BE REMOVED AND STORED BY THE CONTRACTOR AND REINSTALLED AS SOON AS CONSTRUCTION ACTIVITIES PERMIT. IF SIGNS ARE DAMAGED IT WILL BE THE RESPONSIBILITY OF THE CONTRACTOR TO REPLACE THEM TO THE VILLAGE'S CURRENT STANDARD AT NO COST TO THE CONTRACT. ALL STOP SIGNS SHALL BE REINSTALLED IMMEDIATELY.

BENCHMARKS NAVD88 DATUM

- B.M. # 6 RAILROAD SPIKE SET IN POWER POLE WITH LIGHT LOCATED AT THE NORTHWEST CORNER OF N. PRINCETON AVENUE AND W. TERRACE STREET ELEVATION = 695.29
- B.M. # 7 RAILROAD SPIKE SET IN POWER POLE WITH LIGHT LOCATED AT THE NORTHWEST CORNER OF N. PRINCETON AVENUE AND E. VERMONT STREET ELEVATION = 701.14
- B.M. # 8 RAILROAD SPIKE SET IN POWER POLE WITH LIGHT LOCATED AT THE SOUTHEAST CORNER OF N. PRINCETON AVENUE AND E. PLYMOUTH STREET ELEVATION = 702.49
- B.M. # 9 RAILROAD SPIKE SET IN POWER POLE LOCATED AT ADDRESS 553 N. PRINCETON AVENUE EAST SIDE OF ROAD ELEVATION = 696.89
- B.M. # 10 RAILROAD SPIKE SET IN POWER POLE LOCATED AT THE NORTHEAST CORNER OF N. PRINCETON AVENUE BETWEEN ADDRESS 30 AND 26 W. RIDGE ROAD ELEVATION = 697.94

Sheet List Table	
Sheet Number	Sheet Title
1	COVER
2	LEGENDS, ABBREVIATIONS, GENERAL NOTES, AND BENCHMARKS
3	SUMMARY OF QUANTITIES
4	N. PRINCETON AVENUE STA. 10+00 TO STA. 15+00 PLAN AND PROFILE
5	N. PRINCETON AVENUE STA. 15+00 TO STA. 20+00 PLAN AND PROFILE
6	N. PRINCETON AVENUE STA. 20+00 TO STA. 25+00 PLAN AND PROFILE
7	DETAILS
8	DETAILS

I:\MOKEVA\WPK\141151-WATER MAIN DESIGN YEAR 1\CADD\141151-TOPO C3D.DWG SHT2
 Plotted: 9/2/2015 10:43 AM By: 352ABN
 Copyright © 2015, By Baxter & Woodman, Inc.
 State of Illinois - Professional Design Firm
 License No. - 184-001121 - Expires 4-30-15



DESIGNED - LMS	REVISED -
DRAWN - TJB	REVISED -
CHECKED - SEO	REVISED -
DATE - 8-25-15	REVISED -

**VILLAGE OF VILLA PARK, ILLINOIS
 N. PRINCETON AVENUE
 WATER MAIN IMPROVEMENTS**

LEGENDS, ABBREVIATIONS, GENERAL NOTES, AND BENCHMARKS

SCALE:	PROJECT NO: 141151	STA. TO STA.	FED. ROAD DIST. NO.	ILLINOIS	FED. AID PROJECT
--------	--------------------	--------------	---------------------	----------	------------------

F.A. RTE.	SECTION	COUNTY	TOTAL SHEETS	SHEET NO.
			8	2

SUMMARY OF QUANTITIES

1	DUCTILE IRON WATER MAIN (OPEN CUT), 6"	FOOT	52
2	DUCTILE IRON WATER MAIN (OPEN CUT), 8"	FOOT	1,208
3	DUCTILE IRON WATER MAIN (OPEN CUT), 8" RJT	FOOT	40
4	DUCTILE IRON WATER MAIN (OPEN CUT), 10" RJT	FOOT	114
5	TRENCH BACKFILL	CUYD	1,590
6	CONNECTION TO EXISTING WATER MAIN (NON-PRESSURE), 4"	EACH	1
7	CONNECTION TO EXISTING WATER MAIN (NON-PRESSURE), 8"	EACH	1
8	CONNECTION TO EXISTING WATER MAIN (NON-PRESSURE), 10"	EACH	3
9	WATER VALVE, 8"	EACH	2
10	WATER VALVE, 10"	EACH	2
11	VALVE VAULT, 4' DIAMETER	EACH	2
12	VALVE VAULT, 5' DIAMETER	EACH	2
13	FIRE HYDRANT WITH AUXILIARY VALVE AND VALVE BOX	EACH	6
14	WATER SERVICE REPLACEMENT, 1" SHORT	EACH	17
15	WATER SERVICE REPLACEMENT, 1" LONG	EACH	19
16	STORM SEWER REMOVAL	FOOT	44
17	STORM SEWERS (WATER MAIN QUALITY), 15"	FOOT	12
18	STORM SEWERS (WATER MAIN QUALITY), 18"	FOOT	32
19	REMOVAL AND DISPOSAL OF UNSUITABLE MATERIAL	CUYD	30
20	CLASS D PATCHES, 6"	SQYD	980
21	DRIVEWAY PAVEMENT REMOVAL	SQYD	490
22	HOT-MIX ASPHALT DRIVEWAY PAVEMENT, 4"	SQYD	270

23	PORTLAND CEMENT CONCRETE DRIVEWAY PAVEMENT, 6"	SQYD	220
24	COMBINATION CURB AND GUTTER REMOVAL	FOOT	1,425
25	COMBINATION CONCRETE CURB AND GUTTER, TYPE B-6.12 (SPECIAL)	FOOT	1,425
26	AGGREGATE SUBGRADE IMPROVEMENT	CUYD	34
27	AGGREGATE BASE COURSE, TYPE B, 6"	SQYD	70
28	TEMPORARY ACCESS (PRIVATE ENTRANCE)	EACH	18
29	SIDEWALK REMOVAL	SQFT	1,500
30	PORTLAND CEMENT CONCRETE SIDEWALK, 5"	SQFT	1,500
31	DUST CONTROL WATERING	UNIT	5
32	PARKWAY RESTORATION	SQYD	1,000
33	TREE ROOT PRUNING	EACH	17
34	INLET FILTERS	EACH	9
35	WATER MAIN ABANDONMENT	EACH	1
36	FIRE HYDRANT TO BE REMOVED	EACH	2
37	VALVE VAULT TO BE REMOVED	EACH	2
38	VALVE BOX TO BE REMOVED	EACH	1
39	PRECONSTRUCTION VIDEO RECORDING	LSUM	1
40	TRAFFIC CONTROL AND PROTECTION	LSUM	1
41	CONSTRUCTION LAYOUT	LSUM	1
42	CONTINGENCY ALLOWANCE	DOLLAR	30,000

I:\MOKENA\WPK\141151-WATER MAIN DESIGN YEAR 1\CADD\141151-TOPO C3D.DWG SH13
 Plotted: 9/27/2015 10:43 AM By: 352ABN
 Copyright © 2015, By: Baxter & Woodman, Inc.
 State of Illinois - Professional Design Firm
 License No. - 184-001121 - Expires 4-30-15



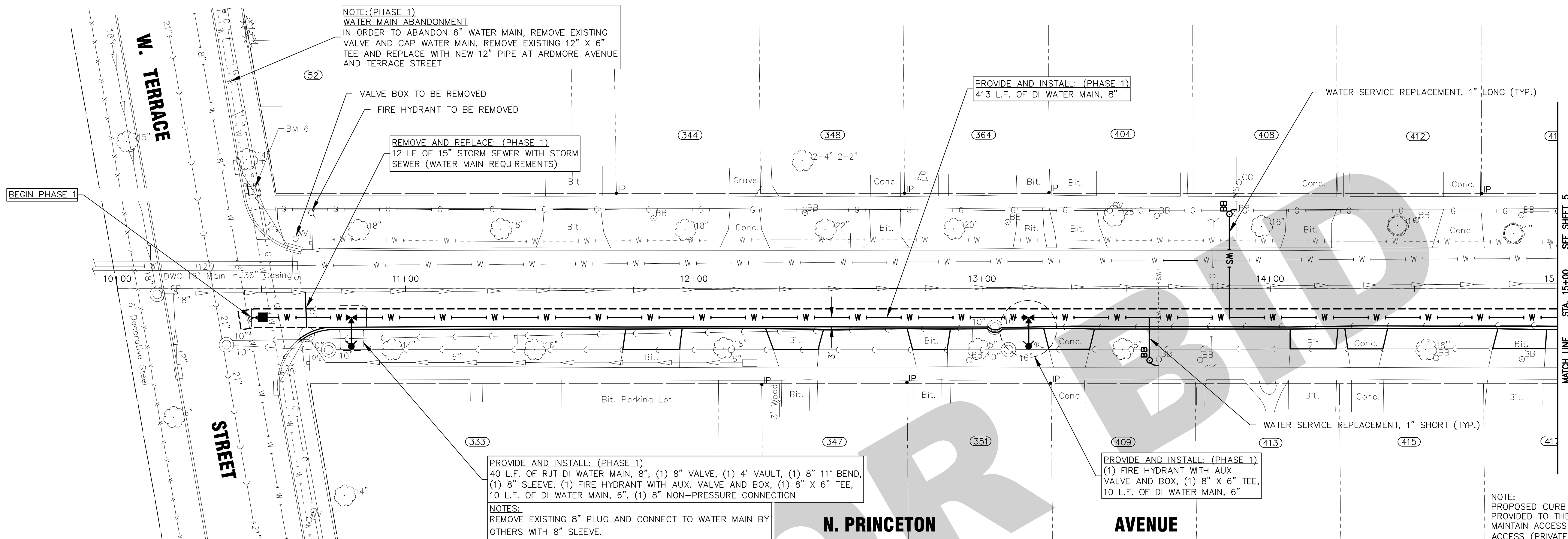
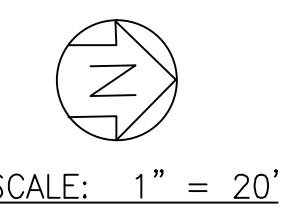
DESIGNED - LMS	REVISED -
DRAWN - TJB	REVISED -
CHECKED - SEO	REVISED -
DATE - 8-25-15	REVISED -

**VILLAGE OF VILLA PARK, ILLINOIS
N. PRINCETON AVENUE
WATER MAIN IMPROVEMENTS**

SUMMARY OF QUANTITIES

SCALE: PROJECT NO: 141151 STA. TO STA.

F.A. RTE.	SECTION	COUNTY	TOTAL SHEETS	SHEET NO.
			8	3
FED. ROAD DIST. NO.	ILLINOIS	FED. AID PROJECT		

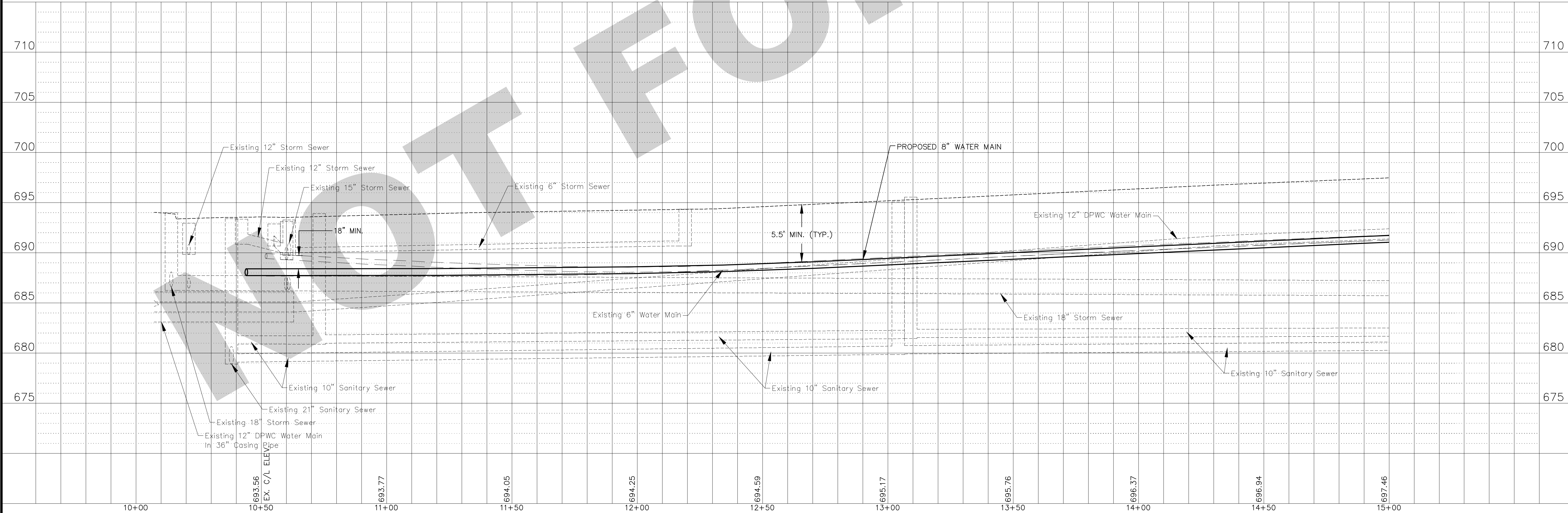


PROVIDE AND INSTALL: (PHASE 1)
 40 L.F. OF RJT DI WATER MAIN, 8", (1) 8" VALVE, (1) 4' VAULT, (1) 8" 11' BEND,
 (1) 8" SLEEVE, (1) FIRE HYDRANT WITH AUX. VALVE AND BOX, (1) 8" X 6" TEE,
 10 L.F. OF DI WATER MAIN, 6", (1) 8" NON-PRESSURE CONNECTION

NOTES:
 REMOVE EXISTING 8" PLUG AND CONNECT TO WATER MAIN BY OTHERS WITH 8" SLEEVE.

PROVIDE AND INSTALL: (PHASE 1)
 (1) FIRE HYDRANT WITH AUX. VALVE AND BOX, (1) 8" X 6" TEE,
 10 L.F. OF DI WATER MAIN, 6"

NOTE:
 PROPOSED CURB AND GUTTER ELEVATIONS SHALL BE PROVIDED TO THE CONTRACTOR BY THE ENGINEER. MAINTAIN ACCESS TO DRIVEWAYS WITH TEMPORARY ACCESS (PRIVATE ENTRANCE).



I:\MOKENA\141151-WATER MAIN DESIGN YEAR 1\CADD\141151-TOPO C3D.DWG PWP1
 Plotted: 9/2/2015 10:43 AM By: 352ABN
 Copyright © 2015, By: Baxter & Woodman, Inc.
 State of Illinois - Professional Design Firm
 License No. - 184-001121 - Expires 4-30-15

	DESIGNED - LMS	REVISED -	VILLAGE OF VILLA PARK, ILLINOIS N. PRINCETON AVENUE WATER MAIN IMPROVEMENTS	N. PRINCETON AVENUE STA. 10+00 TO STA. 15+00 PLAN AND PROFILE	F.A. RTE.	SECTION	COUNTY	TOTAL SHEETS	SHEET NO.
	DRAWN - TJB	REVISED -						8	4
	CHECKED - SEO	REVISED -			FED. ROAD DIST. NO.	ILLINOIS	FED. AID PROJECT		
	DATE - 8-25-15	REVISED -			SCALE: HORIZ. 1"=20' / VERT. 1"=5'		PROJECT NO: 141151	STA.	TO STA.

PROVIDE AND INSTALL: (PHASE 1)
 (1) FIRE HYDRANT WITH AUX. VALVE
 AND BOX, (1) 8" X 6" TEE,
 8 L.F. OF DI WATER MAIN, 6"

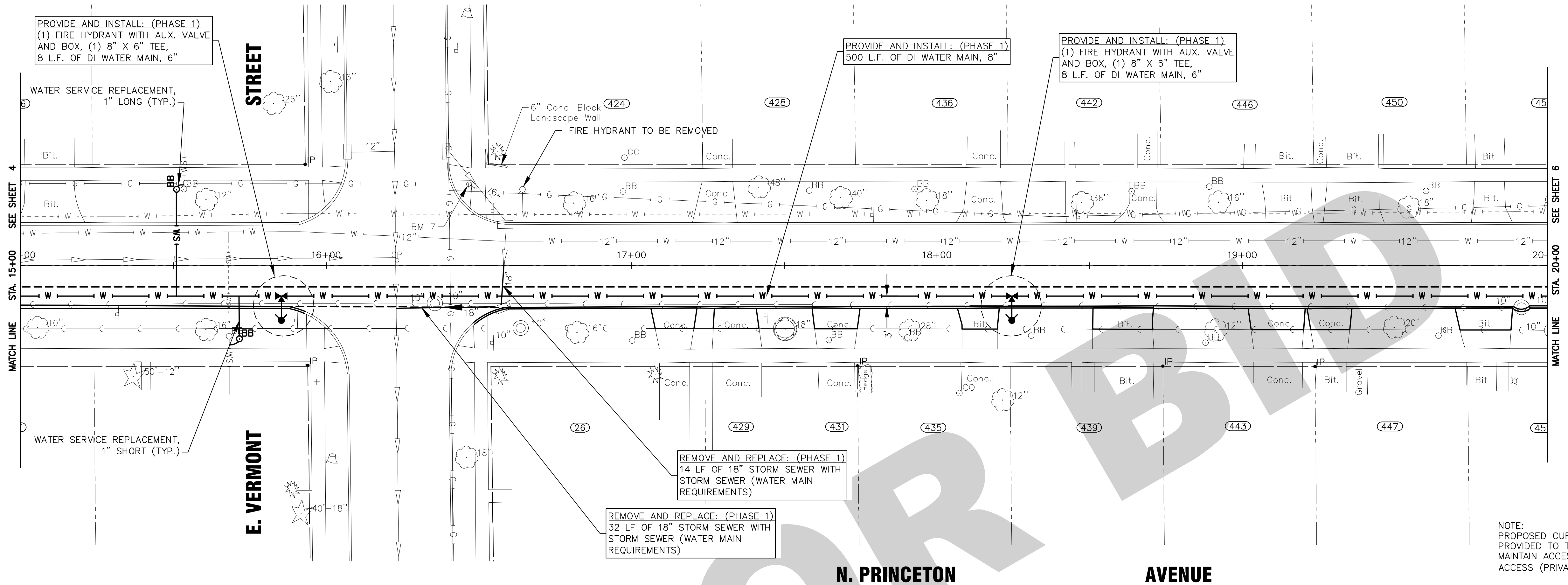
PROVIDE AND INSTALL: (PHASE 1)
 500 L.F. OF DI WATER MAIN, 8"

PROVIDE AND INSTALL: (PHASE 1)
 (1) FIRE HYDRANT WITH AUX. VALVE
 AND BOX, (1) 8" X 6" TEE,
 8 L.F. OF DI WATER MAIN, 6"

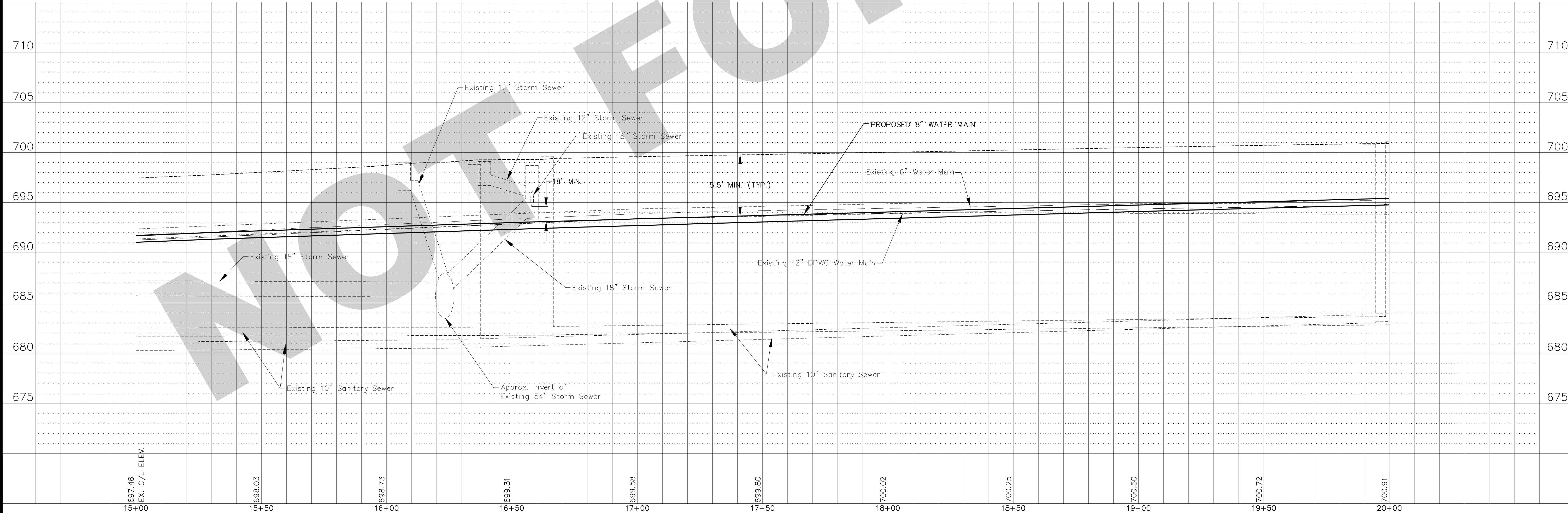
REMOVE AND REPLACE: (PHASE 1)
 14 LF OF 18" STORM SEWER WITH
 STORM SEWER (WATER MAIN
 REQUIREMENTS)

REMOVE AND REPLACE: (PHASE 1)
 32 LF OF 18" STORM SEWER WITH
 STORM SEWER (WATER MAIN
 REQUIREMENTS)

SCALE: 1" = 20'



NOTE:
 PROPOSED CURB AND GUTTER ELEVATIONS SHALL BE
 PROVIDED TO THE CONTRACTOR BY THE ENGINEER.
 MAINTAIN ACCESS TO DRIVEWAYS WITH TEMPORARY
 ACCESS (PRIVATE ENTRANCE).



I:\MOKENA\WIPK\141151-WATER MAIN DESIGN YEAR 1\CADD\141151-TOPO C3D.DWG PWP2
 Plotted: 9/2/2015 10:44 AM By: 352ABN
 Copyright © 2015, By: Baxter & Woodman, Inc.
 State of Illinois - Professional Design Firm
 License No. - 184-001121 - Expires 4-30-15



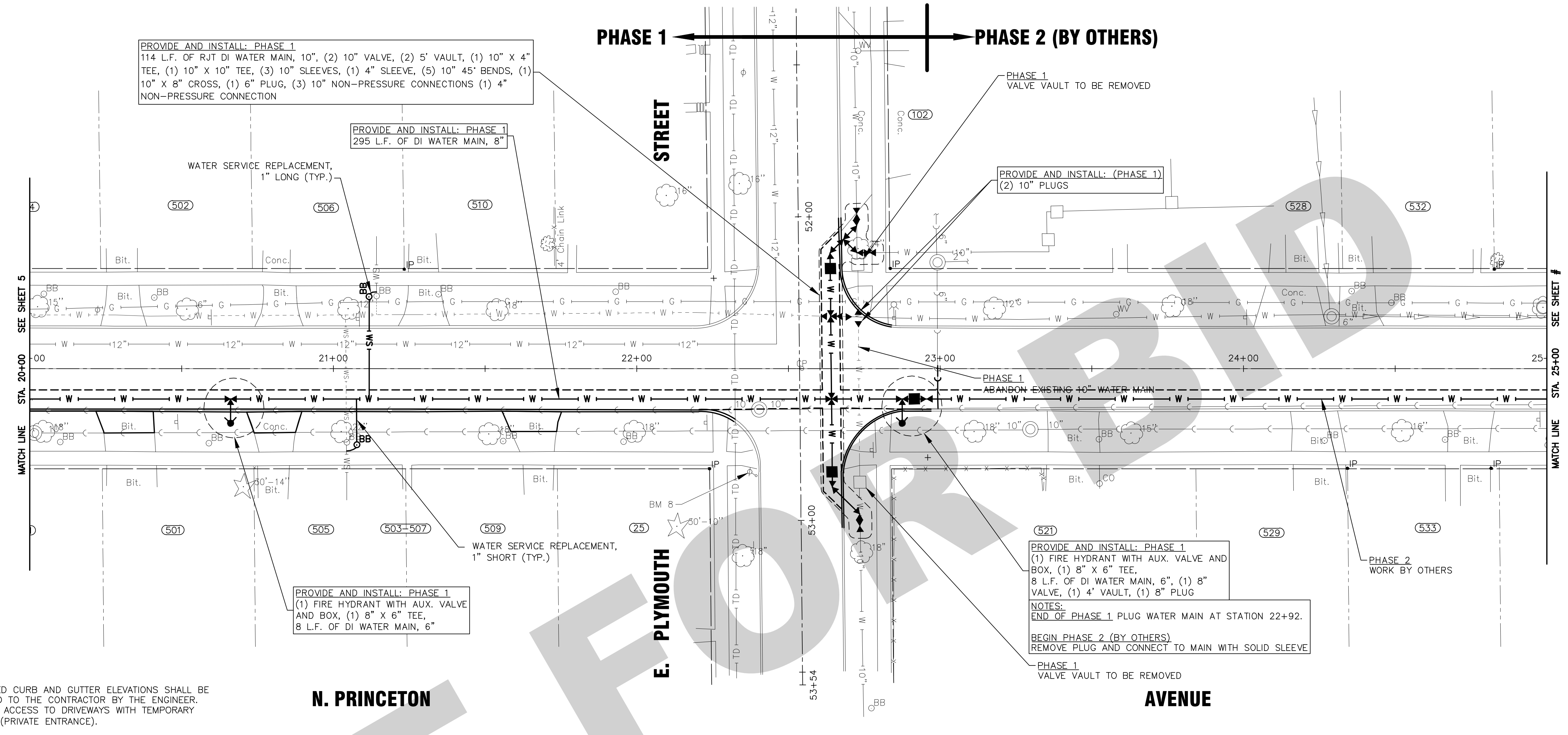
DESIGNED - LMS	REVISED -
DRAWN - TJB	REVISED -
CHECKED - SEO	REVISED -
DATE - 8-25-15	REVISED -

VILLAGE OF VILLA PARK, ILLINOIS
N. PRINCETON AVENUE
WATER MAIN IMPROVEMENTS

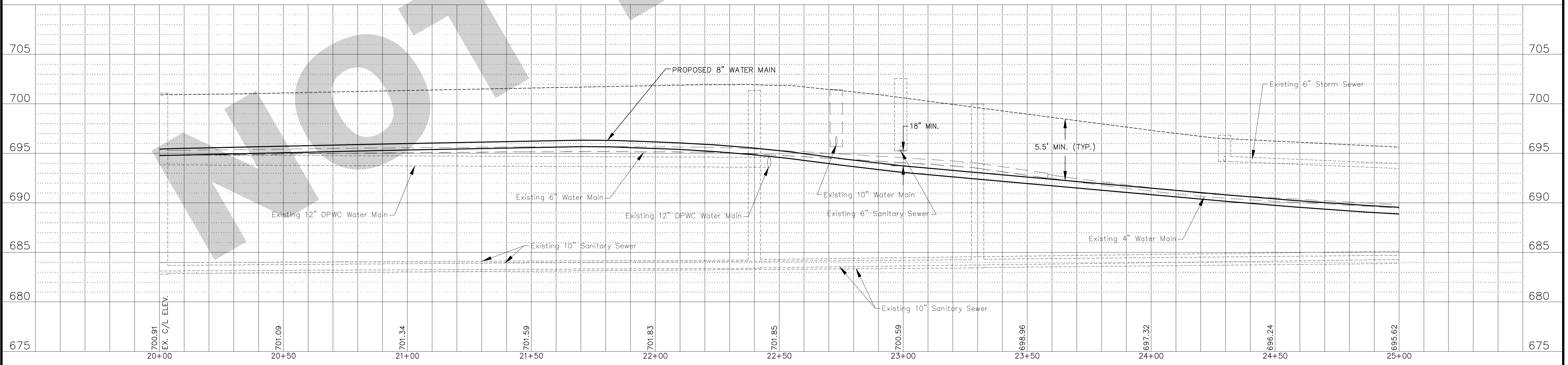
N. PRINCETON AVENUE STA. 15+00 TO STA. 20+00 PLAN AND PROFILE

SCALE: HORIZ. 1"=20' / VERT. 1"=5' PROJECT NO: 141151 STA. TO STA.

F.A. RTE.	SECTION	COUNTY	TOTAL SHEETS	SHEET NO.
			8	5
FED. ROAD DIST. NO.	ILLINOIS	FED. AID PROJECT		



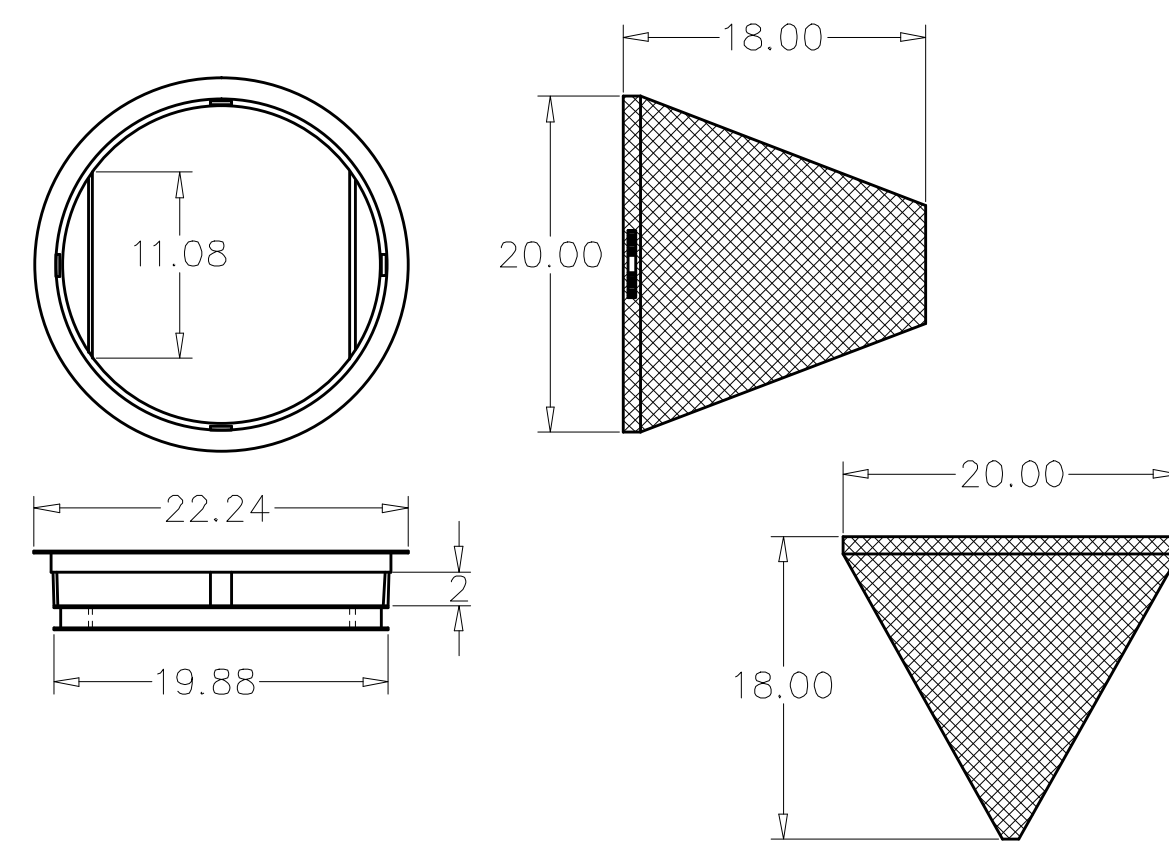
NOTE:
PROPOSED CURB AND GUTTER ELEVATIONS SHALL BE PROVIDED TO THE CONTRACTOR BY THE ENGINEER. MAINTAIN ACCESS TO DRIVEWAYS WITH TEMPORARY ACCESS (PRIVATE ENTRANCE).



I:\MOKENA\141151-WATER MAIN DESIGN YEAR 1\CADD\141151-TOPO C3D.DWG PWP3
 Plotted: 9/2/2015 10:44 AM By: 352ABN
 Copyright © 2015, By: Baxter & Woodman, Inc.
 State of Illinois - Professional Design Firm
 License No. - 184-001121 - Expires 4-30-15

	DESIGNED - LMS	REVISED -	VILLAGE OF VILLA PARK, ILLINOIS N. PRINCETON AVENUE WATER MAIN IMPROVEMENTS	N. PRINCETON AVENUE STA. 20+00 TO STA. 25+00 PLAN AND PROFILE	F.A. RTE.	SECTION	COUNTY	TOTAL SHEETS	SHEET NO.
	DRAWN - TJB	REVISED -							8
	CHECKED - SEO	REVISED -			FED. ROAD DIST. NO.		ILLINOIS	FED. AID PROJECT	
	DATE - 8-25-15	REVISED -			SCALE: HORIZ. 1"=20' / VERT. 1"=5'		PROJECT NO: 141151	STA.	TO STA.

I:\MOKENA\WPK\141151-WATER MAIN DESIGN YEAR 1\CADD\141151-TOPO C3D.DWG DETAILS
 Plotted: 9/2/2015 10:44 AM By: 352ABN
 Copyright © 2015, By: Baxter & Woodman, Inc.
 State of Illinois - Professional Design Firm
 License No. - 184-001121 - Expires 4-30-15



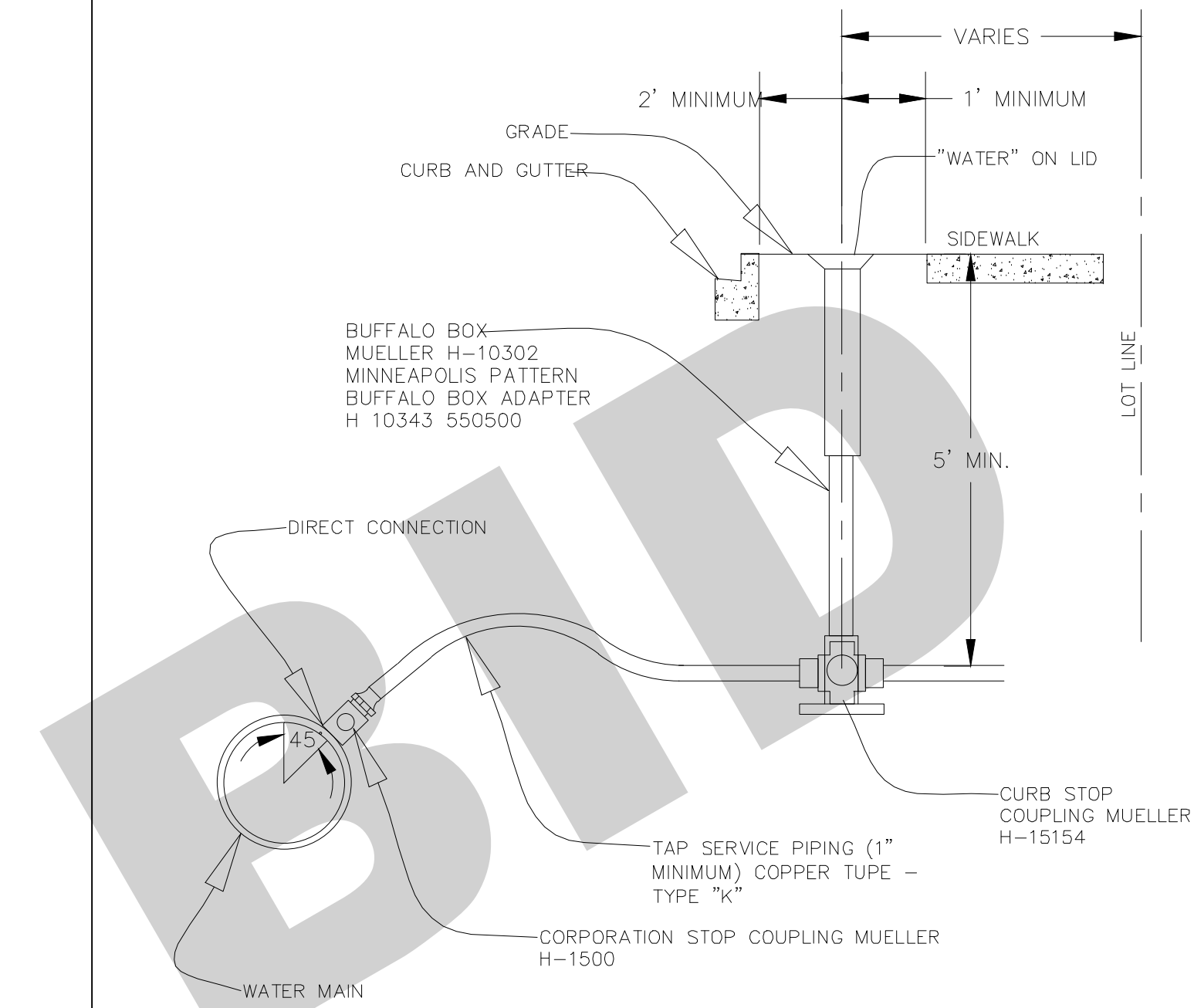
DRAWING BY MARATHON MATERIALS, INC.

GENERAL NOTES:

1. USE DRAINAGE STRUCTURE INLET FILTER MANUFACTURED BY MARATHONMATERIALS, INC. OR APPROVED EQUAL.
2. FRAME: TOP FLANGE FABRICATED FROM 1.25 X 1.25 X 0.125 ANGLE. BASE RIM FABRICATED FROM 1.5 X 0.5 X 0.125 CHANNEL HANDLES AND SUSPENSION BRACKETS FABRICATED FROM 1.25 X 0.25 FLAT STOCK. ALL DOMESTIC STEEL CONFORMING TO ASTM - A36.
3. SEDIMENT BAG: BAG FABRICATED FROM 4 OZ./SQ. YD. NON-WOVEN POLYPROPYLENE GEOTEXTILE REINFORCED WITH POLYESTER MESH. BAG SECURED TO BASE RIM WITH A STAINLESS STEEL STRAP AND LOCK.

NOT TO SCALE

REV: _____	DATE: _____	DRAINAGE STRUCTURE PROTECTION	VILLAGE OF VILLA PARK
REV: RMS _____	DATE: JUL 2004		
DRAWN BY: VV _____	DATE: JAN 2003		
		STORM - 17	

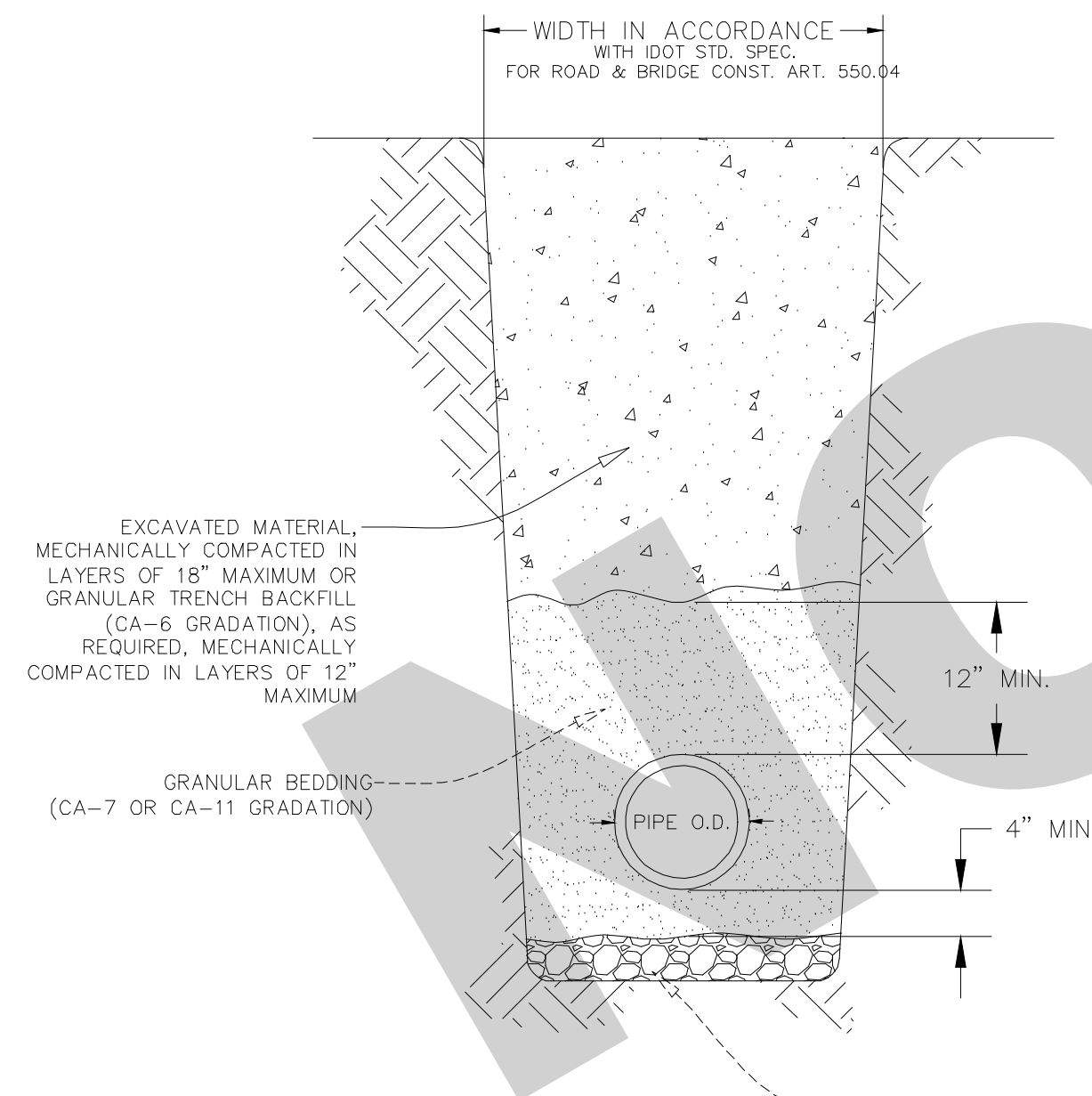


GENERAL NOTES:

1. CURB STOP MUST BE INSTALLED 2 (TWO) FEET MINIMUM FROM THE BACK OF CURB AND 1 (ONE) FOOT FROM THE EDGE OF SIDEWALK.
2. CURB STOP MUST BE INSTALLED PERPENDICULAR TO BUILDING.

NOT TO SCALE

REV: _____	DATE: _____	TYPICAL WATER TAP	VILLAGE OF VILLA PARK
REV: RMS _____	DATE: JUL 2004		
DRAWN BY: VV _____	DATE: JAN 2003		
		WATER - 12	

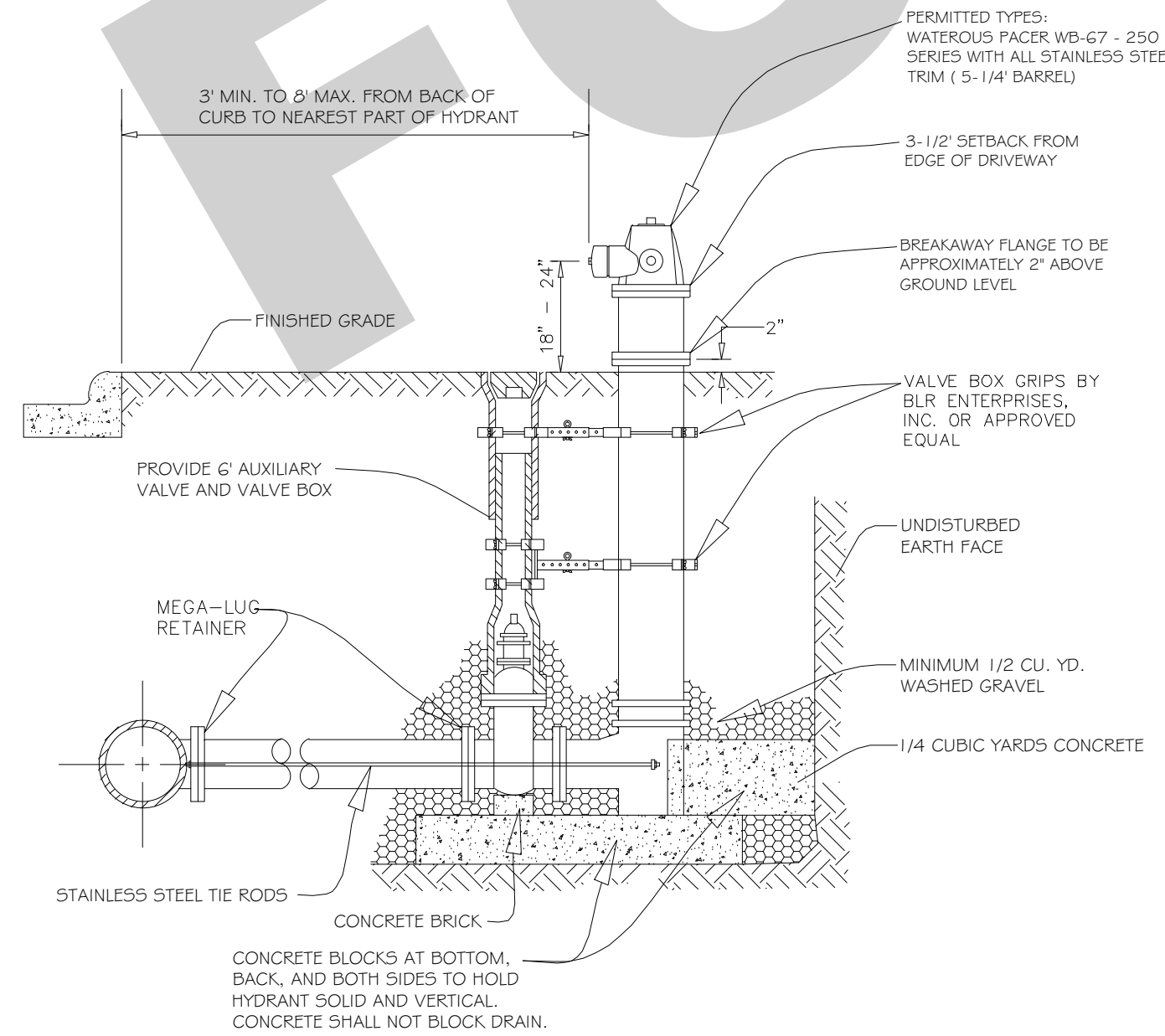


GENERAL NOTES:

1. GRANULAR TRENCH BACKFILL SHALL BE MECHANICALLY COMPACTED IN LAYERS OF 12" MAXIMUM, LOOSE MEASURE, TO 95% OF STANDARD MAXIMUM DENSITY (ASTM D 698).
2. EXCAVATED MATERIAL USED FOR BACKFILL SHALL BE MECHANICALLY COMPACTED IN LAYERS OF 18" MAXIMUM, LOOSE MEASURE, TO 90% OF STANDARD MAXIMUM DENSITY (ASTM D 698).

NOT TO SCALE

REV: _____	KLM	DATE: 10/12/2006	PIPE INSTALLATION	VILLAGE OF VILLA PARK
REV: RMS _____	DATE: 07/2004			
DRAWN BY: VIV _____	DATE: 01/2003			
			SANITARY - 08	

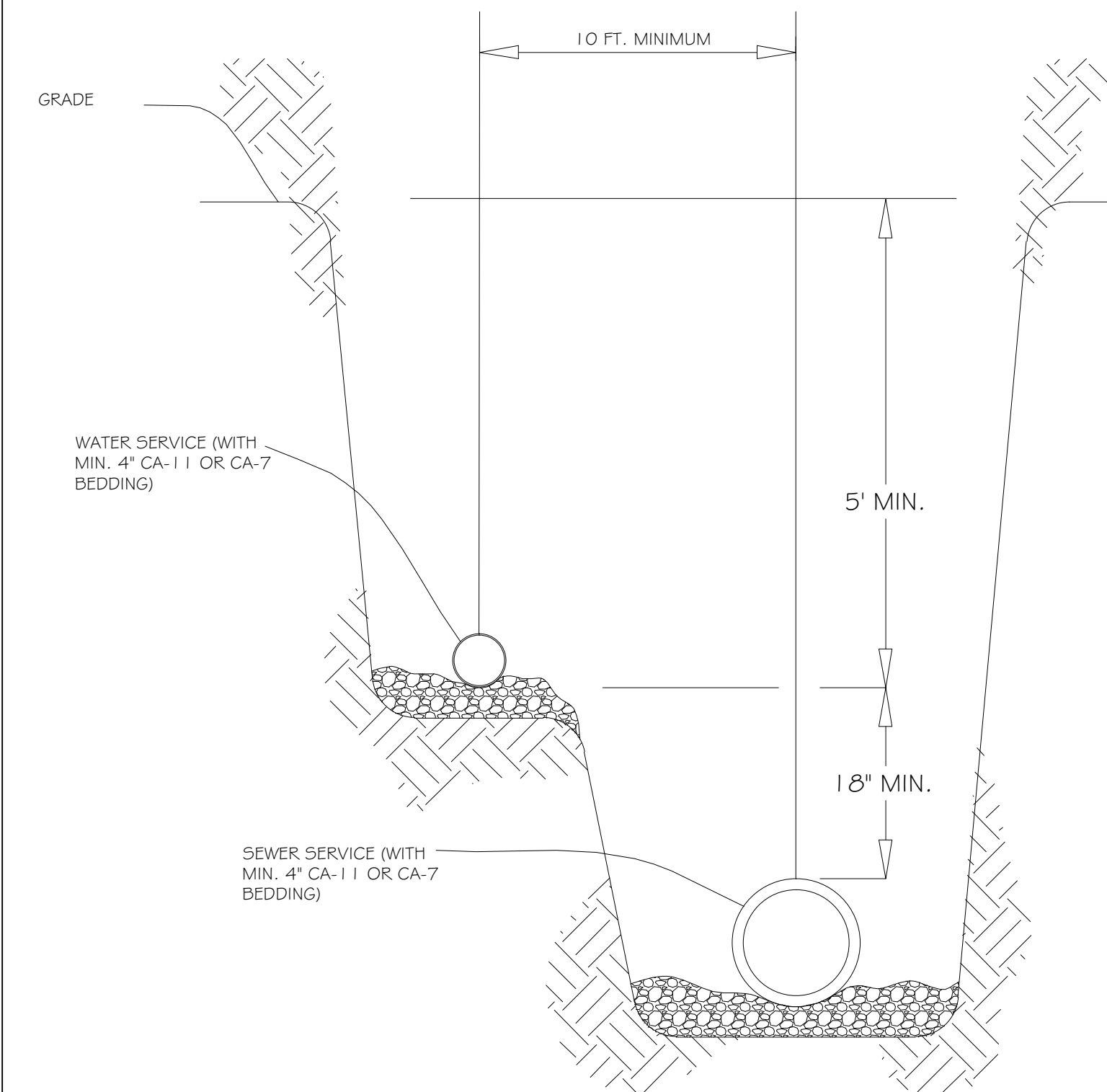


GENERAL NOTES:

1. MAXIMUM BARREL EXTENSIONS ARE 18 INCHES AND SHALL BE WATEROUS EXTENSION FOR WATEROUS HYDRANTS.
2. ALL HYDRANTS ARE TO BE SUPPLIED WITH A 6" FLANGED AND MECHANICAL JOINT AUXILIARY VALVE THAT CONFORMS TO AWWA 500-80. ALL TRIM BOLTS ARE TO BE STAINLESS STEEL.
3. ALL BELOW GRADE FASTENERS TO BE STAINLESS STEEL:
A. BOLTS AND THREADED RODS - GRADE #304
B. NUTS AND WASHERS - GRADE #300
4. MEGA-LUG RETAINERS MUST BE INSTALLED ON ALL MECHANICAL FITTINGS.

NOT TO SCALE

REV: _____	DATE: _____	FIRE HYDRANT WITH AUX. VALVE AND BOX SETTING	VILLAGE OF VILLA PARK
REV: RMS _____	DATE: JUL 2004		
DRAWN BY: VV _____	DATE: JAN 2003		
		WATER - 04	



GENERAL NOTES:

1. COMMON TRENCH PER ILLINOIS PLUMBING CODE

NOT TO SCALE

REV: _____	DATE: _____	WATER AND SEWER SERVICE SEPARATION	VILLAGE OF VILLA PARK
REV: RMS _____	DATE: JUL 2004		
DRAWN BY: VV _____	DATE: JAN 2003		
		WATER - 13	



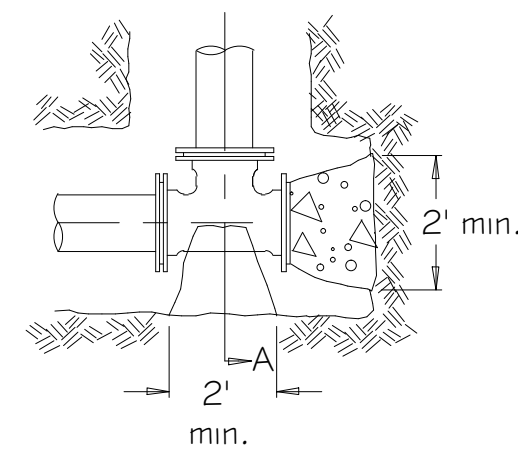
DESIGNED - LMS	REVISED -
DRAWN - TJB	REVISED -
CHECKED - SEO	REVISED -
DATE - 8-25-15	REVISED -

**VILLAGE OF VILLA PARK, ILLINOIS
N. PRINCETON AVENUE
WATER MAIN IMPROVEMENTS**

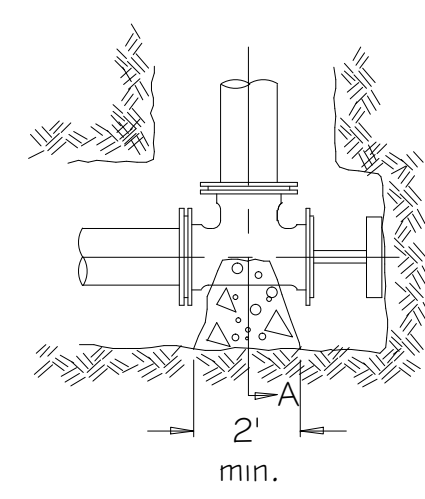
DETAILS

SCALE: HORIZ. 1"=20' / VERT. 1"=5' PROJECT NO: 141151 STA. TO STA.

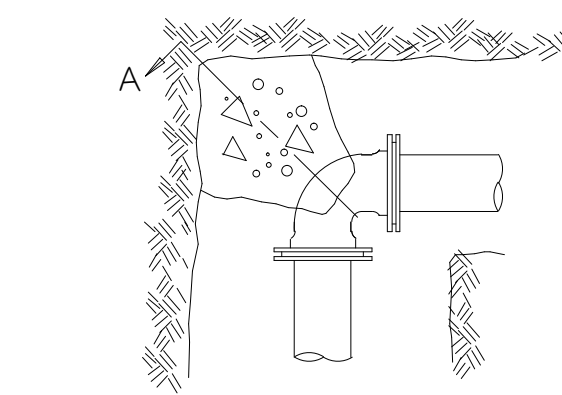
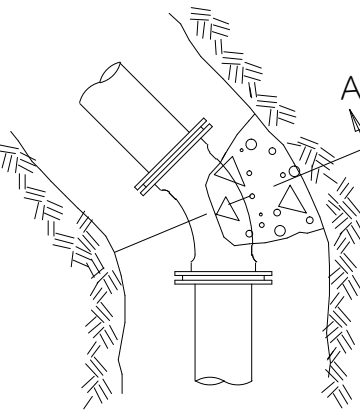
F.A. RTE.	SECTION	COUNTY	TOTAL SHEETS	SHEET NO.
			8	7
FED. ROAD DIST. NO.		ILLINOIS FED. AID PROJECT		



Alt. 1 Precast Block

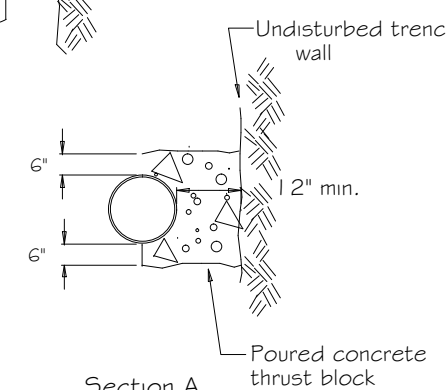
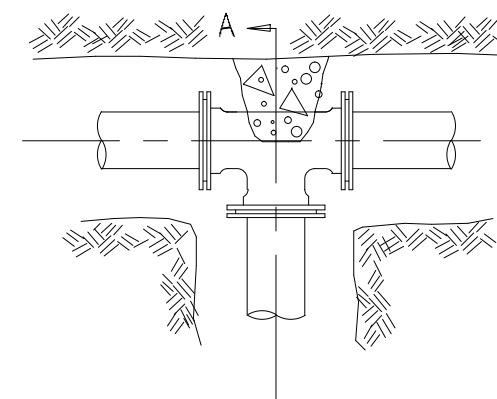


Alt. 2 Brace Plug Against undisturbed earth



GENERAL NOTES:

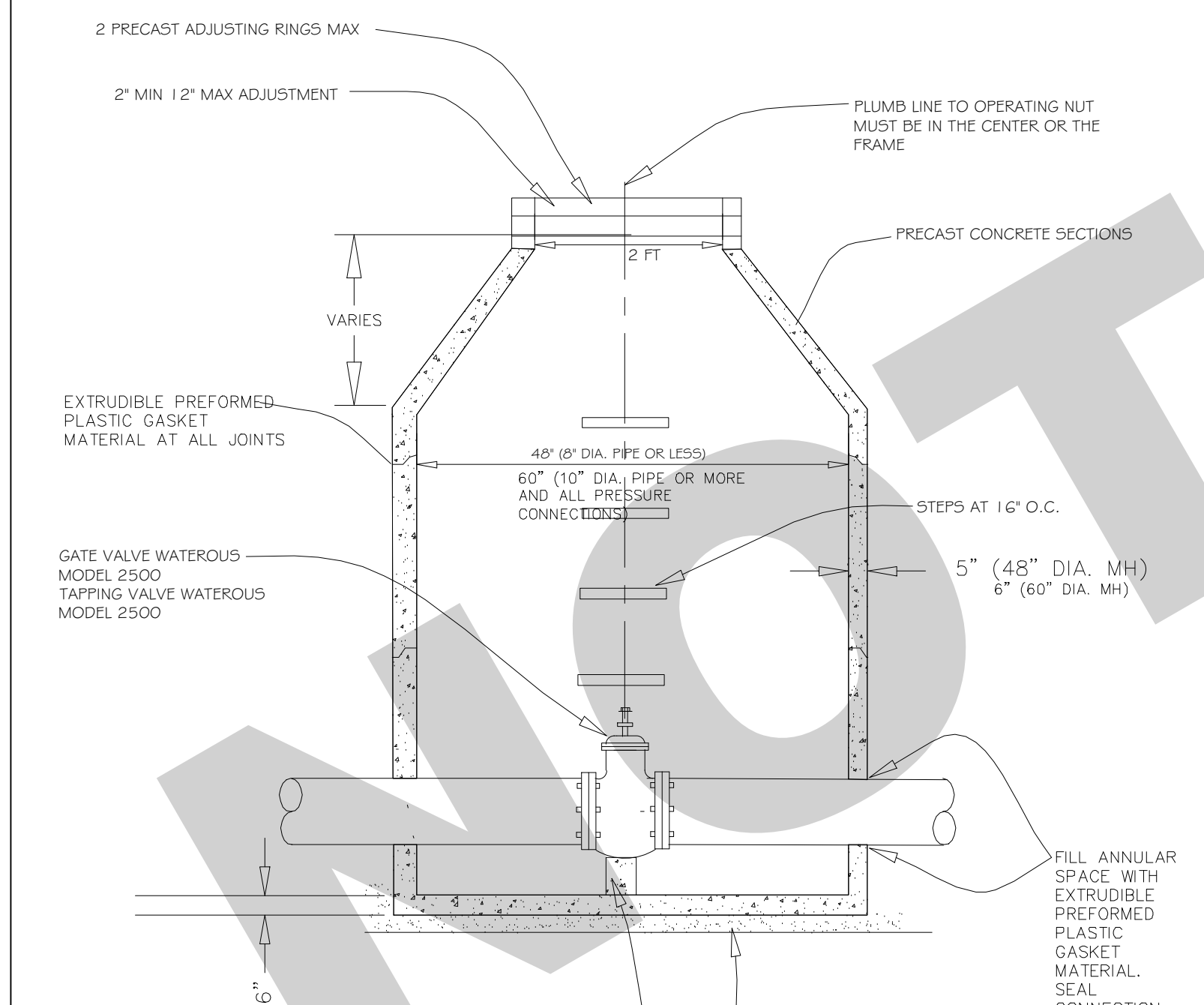
1. Thrust blocks shall be made of 12" thick precast concrete blocks or poured in place concrete.
2. Thrust blocks shall be installed at all tees and bends of 11.25° and greater.
3. Thrust blocks shall be installed against undisturbed soil.
4. Concrete shall be 3000 PSI (min.).
5. Poured concrete shall be placed in such a manner that pipe and fittings will be accessible for repairs.
6. All joints requiring thrust blocking shall also use Meg-a-Lug retainer glands.
7. Use of wood materials for thrust blocking is strongly prohibited.
8. All below grade fasteners to be stainless steel: bolts & threaded rods - grade 304 nuts & washers - grade 300



NOT TO SCALE

Section A
Poured concrete thrust block

REV: RMS	DATE: FEB 2005	THRUST BLOCK INSTALLATION	VILLAGE OF VILLA PARK
DRAWN BY: VV	DATE: FEB 2005		WATER - 22

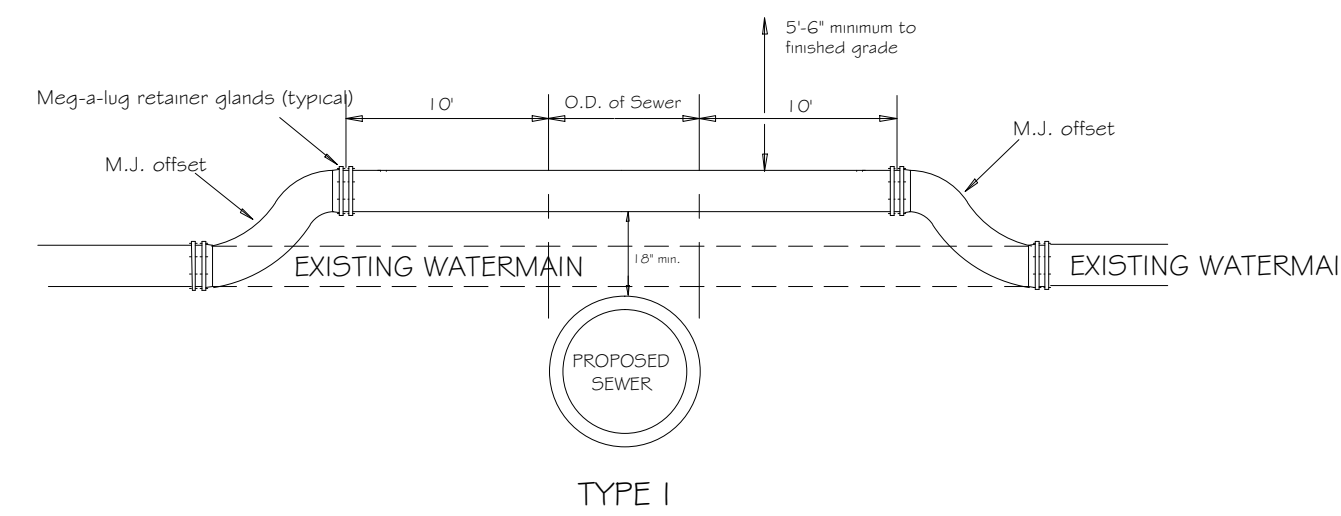


GENERAL NOTES:

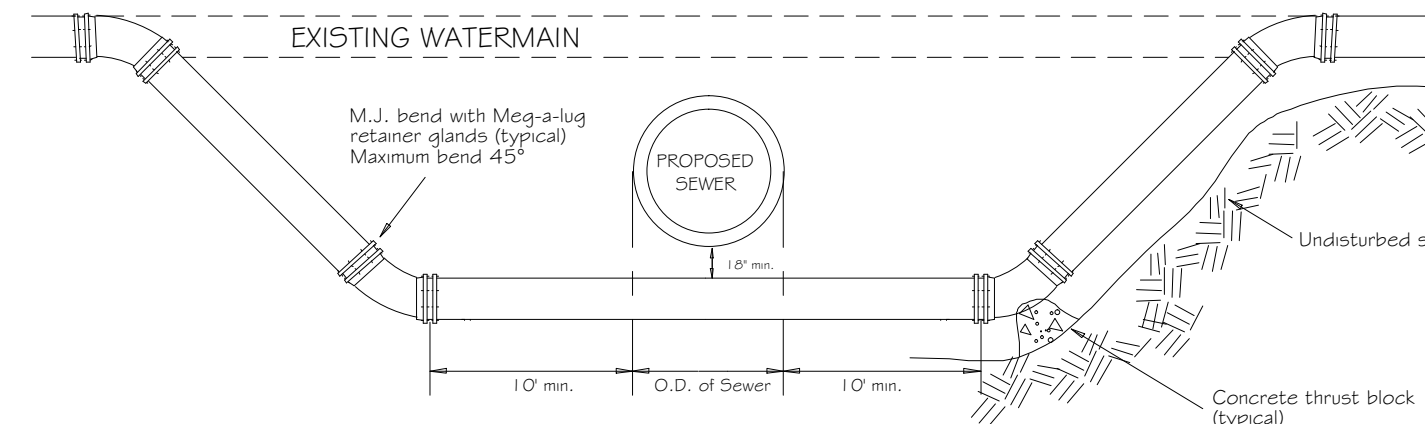
1. ALL BELOW GRADE FASTENERS TO BE STAINLESS STEEL: A. BOLTS AND THREADED RODS - GRADE #304 B. NUTS AND WASHERS - GRADE #300
2. FRAME AND LID: NENAH R-1015-2000 FRAME NENAH R-1015-2001 SELF SEALING LID WATER TO BE CAST INTO COVER

NOT TO SCALE

REV: RMS	DATE: JUL 2004	WATER VALVE IN VAULT	VILLAGE OF VILLA PARK
DRAWN BY: VV	DATE: JAN 2003		WATER - 14



TYPE I



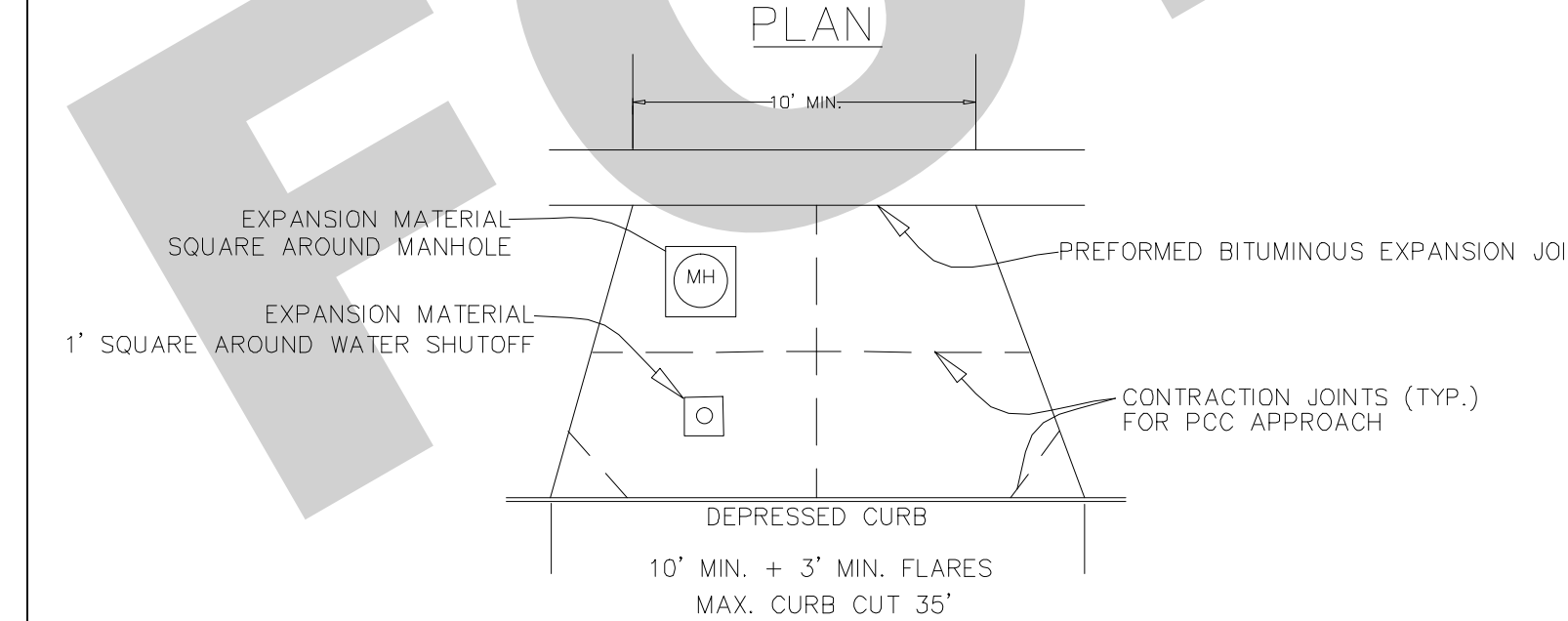
TYPE II

GENERAL NOTES:

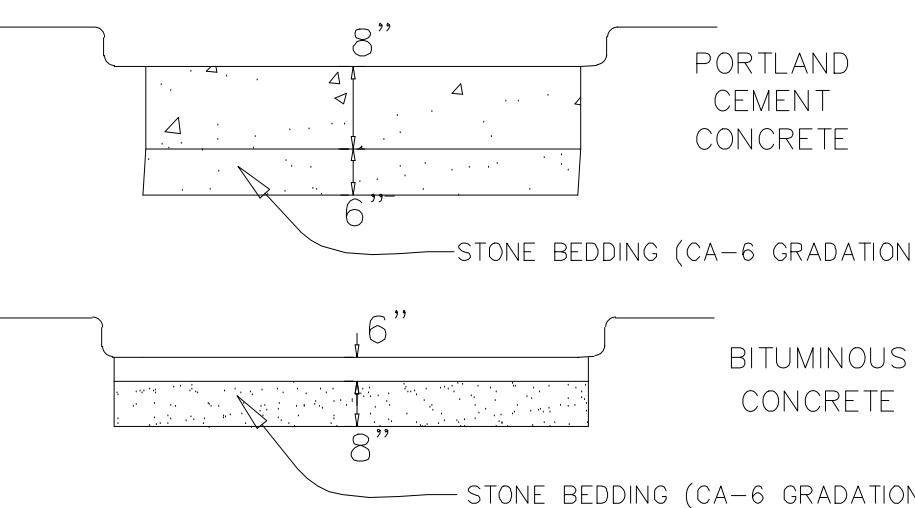
1. MEG-A-LUG RETAINER GLANDS AND THRUST BLOCKING SHALL BE USED AT ALL FITTINGS AND JOINTS.
2. AN EIGHTEEN INCH (18") VERTICAL SEPARATION SHALL BE MAINTAINED BETWEEN THE WATERMAIN AND THE PROPOSED SEWER.
3. WATERMANS SHALL ONLY BE RAISED A MAXIMUM OF 18" WHEN USING M.J. OFFSET FITTINGS.
4. TYPE I RELOCATIONS SHALL ONLY BE USED WHEN THE TOP OF THE RELOCATED WATERMAIN IS 5'6" OR GREATER BELOW FINISHED GRADE.
5. TYPE II RELOCATIONS REQUIRE THE PROPOSED SEWER TO BE INSTALLED IN PRESSURE RATED PIPE (CLASS 52 DUCTILE IRON PIPE, OR PVC SDR-26, ASTM D-2241 PR PIPE) BETWEEN MANHOLES, OR ENCASED IN A BITUMINOUS COATED STEEL CASING PIPE, EXTENDING A MINIMUM OF 20' CENTERED ON THE WATERMAIN.
6. ALL BELOW-GRADE FASTENERS SHALL BE STAINLESS STEEL. A. BOLTS: GRADE 304 B. NUTS AND WASHERS: GRADE 300

NOT TO SCALE

REV: RMS	DATE: 01/07/2008	WATERMAIN RELOCATION PLAN	VILLAGE OF VILLA PARK
DRAWN BY: VV	DATE: 01/07/2008		WATER - 25



COMMERCIAL



PROFILE



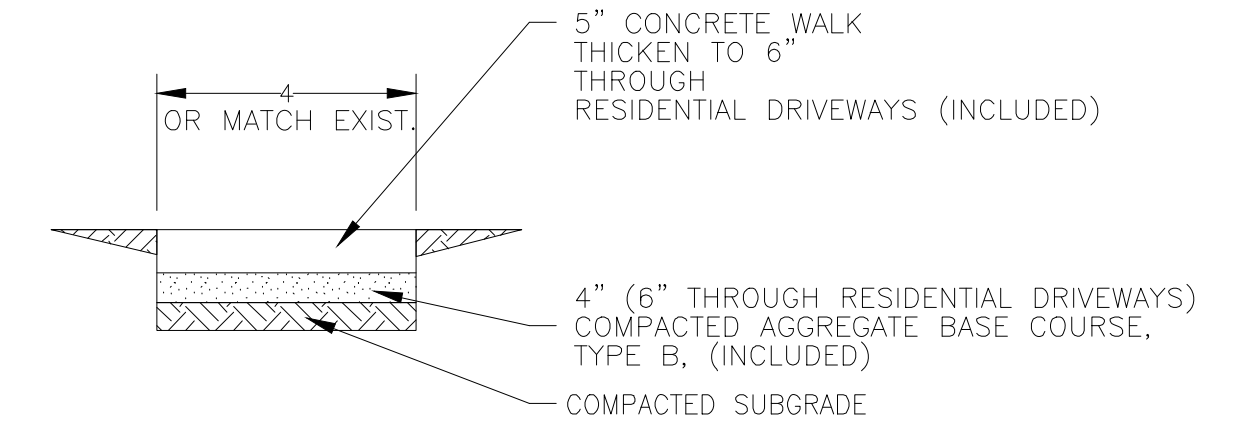
GENERAL NOTES:

1. CURBING AND PROTECTION FOR IDOT SPECS AS APPROVED BY THE VILLAGE ENGINEER
2. ALL STONE BEDDING SHALL BE MECHANICALLY COMPACTED

NOT TO SCALE

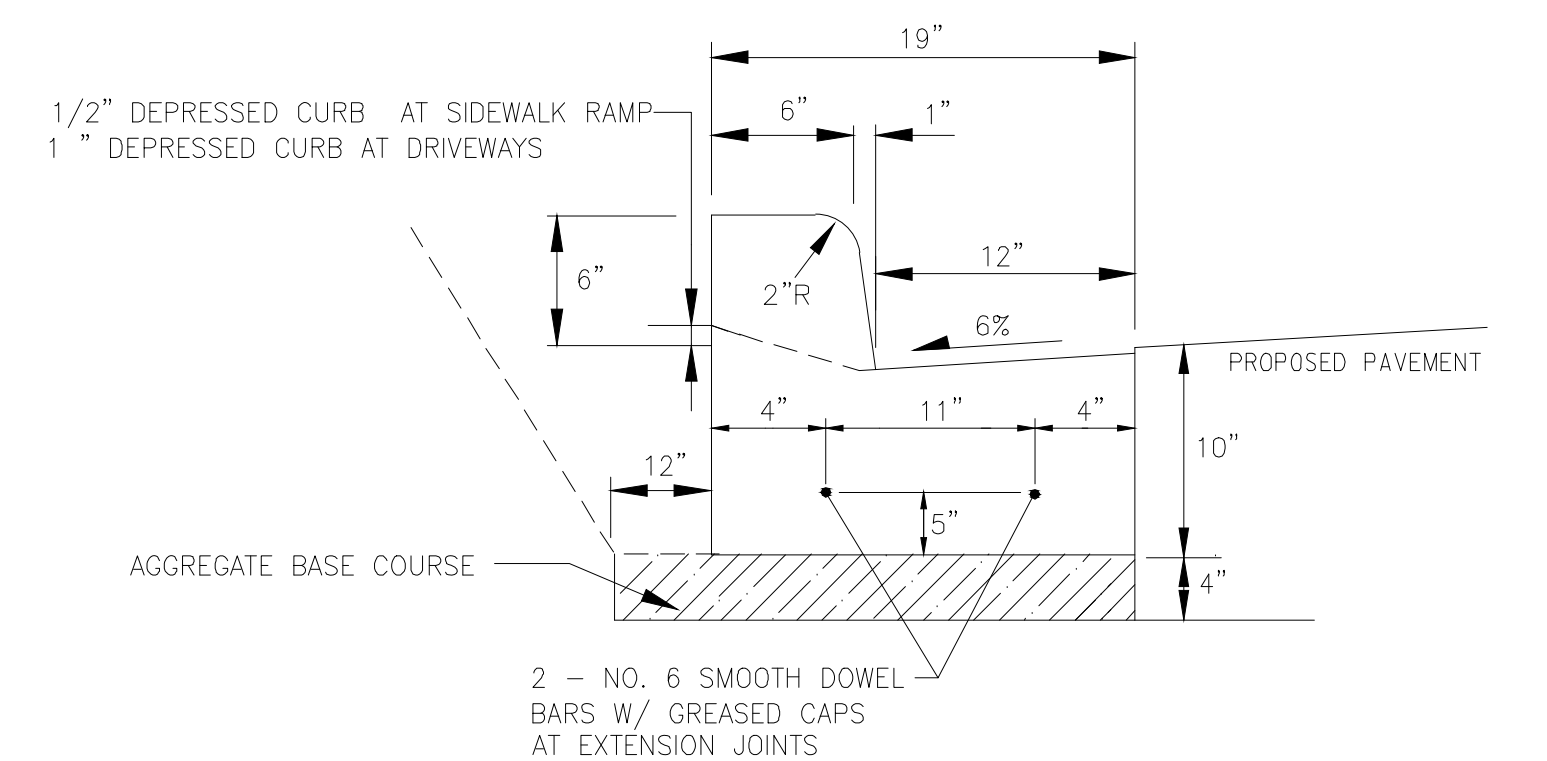
REV: RMS	DATE: 11/13/2007	TYPICAL DRIVEWAY APPROACH	VILLAGE OF VILLA PARK
DRAWN BY: VV	DATE: JAN 2003		STREET - 03

BID



NOTE: PROVIDE FIBER EXPANSION JOINTS WHERE NEW SIDEWALK MEETS EXISTING AND @ 50' O.C. MAX. AND PROVIDE CONTROL JOINTS @ 5' O.C.

P.C.C. SIDEWALK - 5" NO SCALE



COMBINATION CONCRETE CURB AND GUTTER, TYPE B-6.12 (SPECIAL) (NOT TO SCALE)

I:\MOKENA\WPK\141151-WATER MAIN DESIGN YEAR 1\CADD\141151-TOPO C3D.DWG DETAILS (2)
 Plotted: 9/2/2015 10:44 AM By: 352ABN
 Copyright © 2015, By: Baxter & Woodman, Inc.
 State of Illinois - Professional Design Firm
 License No. - 184-001121 - Expires 4-30-15



DESIGNED - LMS	REVISED -
DRAWN - TJB	REVISED -
CHECKED - SEO	REVISED -
DATE - 8-25-15	REVISED -

**VILLAGE OF VILLA PARK, ILLINOIS
N. PRINCETON AVENUE
WATER MAIN IMPROVEMENTS**

DETAILS

SCALE: HORIZ. 1"=20' / VERT. 1"=5' PROJECT NO: 141151 STA. TO STA.

F.A. RTE.	SECTION	COUNTY	TOTAL SHEETS	SHEET NO.
			8	8
FED. ROAD DIST. NO.			ILLINOIS FED. AID PROJECT	