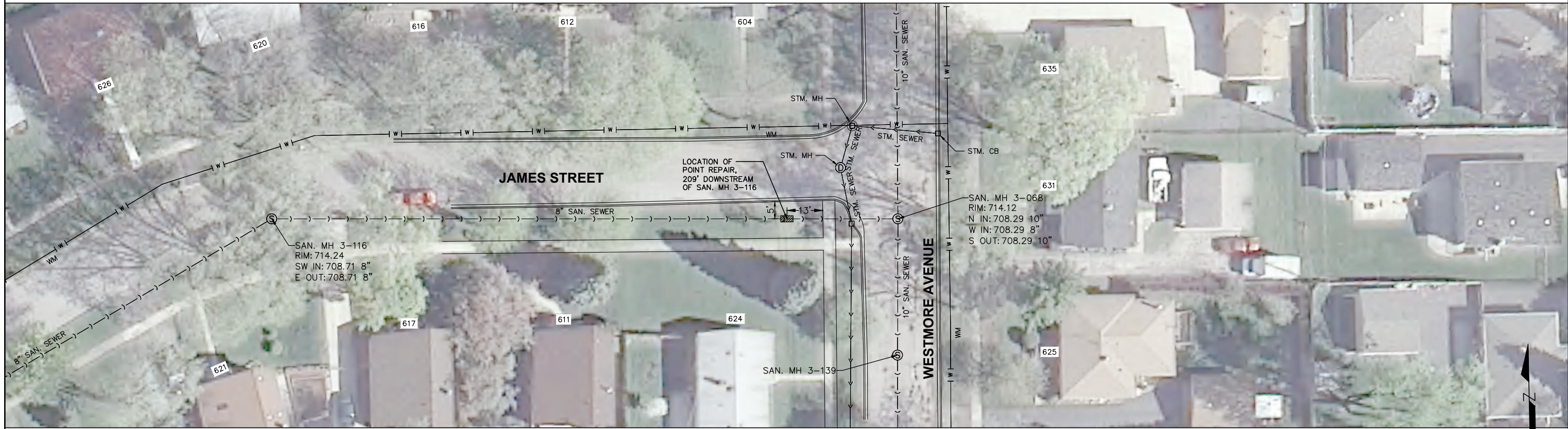


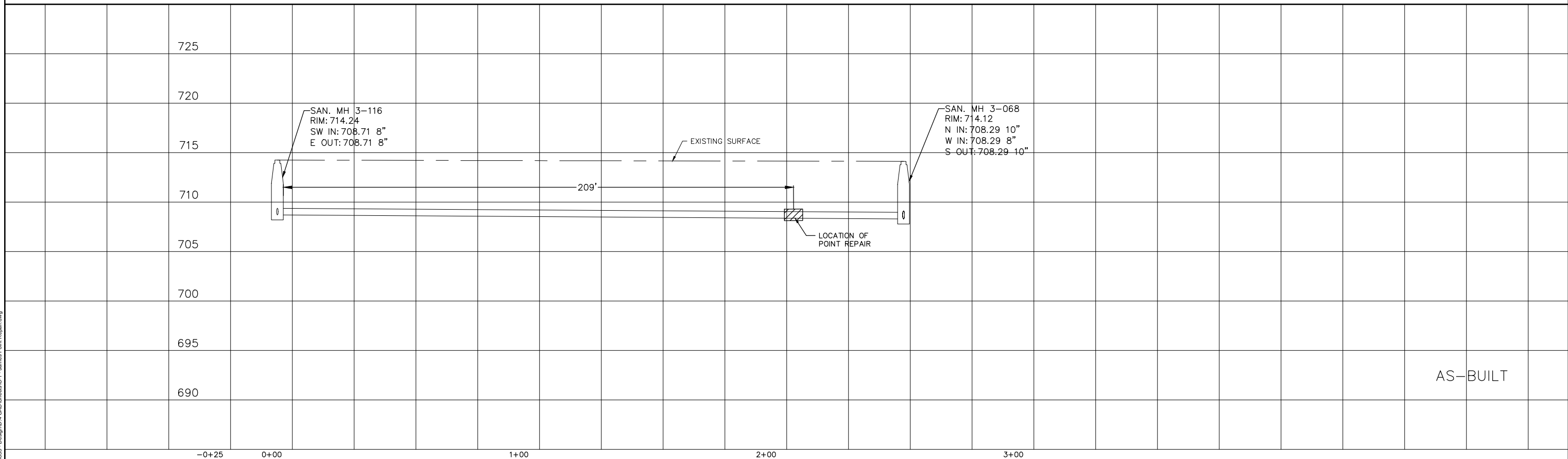


Village of Villa Park, IL  
 2014 Sewer Rehabilitation Program  
 Lining Schedule - Complete

UpstreamID	DownstreamID	Street	Diameter	Length (ft)	Pipe Material	Date Lined	Lined Length	Services	Comments
3-109	3-069	Sunset	8	225	CP	08/26/14	225	6	
3-110	3-109	Sunset	8	333	CP	09/09/14	333	12	
3-111	3-110	Sunset	8	331	CP	09/09/14	331	11	Clipped Laterals - Grout Connections at 48.7' and 263.1'
3-112	3-111	Sunset	8	164	CP	08/29/14	164	5	
3-113	3-114	James	8	227	CP	09/02/14	227	9	
3-114	3-115	James	8	277	CP	08/28/14	277	9	
3-115	3-116	James	8	283	CP	08/28/14	283	8	
3-116	3-068	James	8	252	CP	09/08/14	252	7	
3-119	3-118	Roy	8	168	CP	09/02/14	168	3	
3-120	3-119	Roy	8	266	CP	09/03/14	266	9	
3-124	3-125	Lincoln	8	209	CP	08/27/14	209	5	
3-125	3-126	Lincoln	8	288	CP	08/27/14	288	6	
3-128	3-127	Lincoln	8	166	VCP	08/29/14	166	2	
3-064	3-065	Westmore	10	202	CP	09/13/14	202	4	
3-065	3-066	Westmore	10	181	CP	09/13/14	180	4	
3-066	3-067	Westmore	10	166	CP	09/13/14	166	2	
3-067	3-068	Westmore	10	193	CP	09/13/14	199	3	
3-068	3-139	Westmore	10	54	CP	09/13/14	54	1	
3-117	3-066	Ridge	10	361	CP	09/08/14	361	9	
3-118	3-117	Ridge	10	250	CP	09/04/14	250	7	
3-122	3-118	Ridge	10	35	CP	09/04/14	35	1	
3-123	3-122	Ridge	10	280	CP	09/04/14	280	9	
3-126	3-123	Ridge	10	285	CP	09/03/14	285	7	
3-127	3-126	Lincoln	10	430	RCP	09/05/14	430	8	Repair with two short liners at 112' and 231'
3-139	3-069	Westmore	10	267	CP	09/13/14	267	3	
3-166	3-064	Westmore	10	33	CP	09/13/14	33	0	
3-167	3-166	Westmore	10	72	CP	09/13/14	72	1	



JOB NO.	USMH	DSMH	REPAIR LENGTH	SERVICE	DEPTH	SURFACE	PIPE LENGTH
PR1	3-116	3-068	14.5'	0	5.78'	PARKWAY	253'



C:\VillaPark\_IL11-150835 - Design\04 CAD\Sheets\C1 - James Point Repair.dwg

DESIGNED: C MORLEY	1/8/15 - CHANGED POINT REPAIR LENGTH TO 14.5'
DRAWN: R JOHNSON	
CHECKED: C MORLEY	
DATE: MAY 7, 2014	



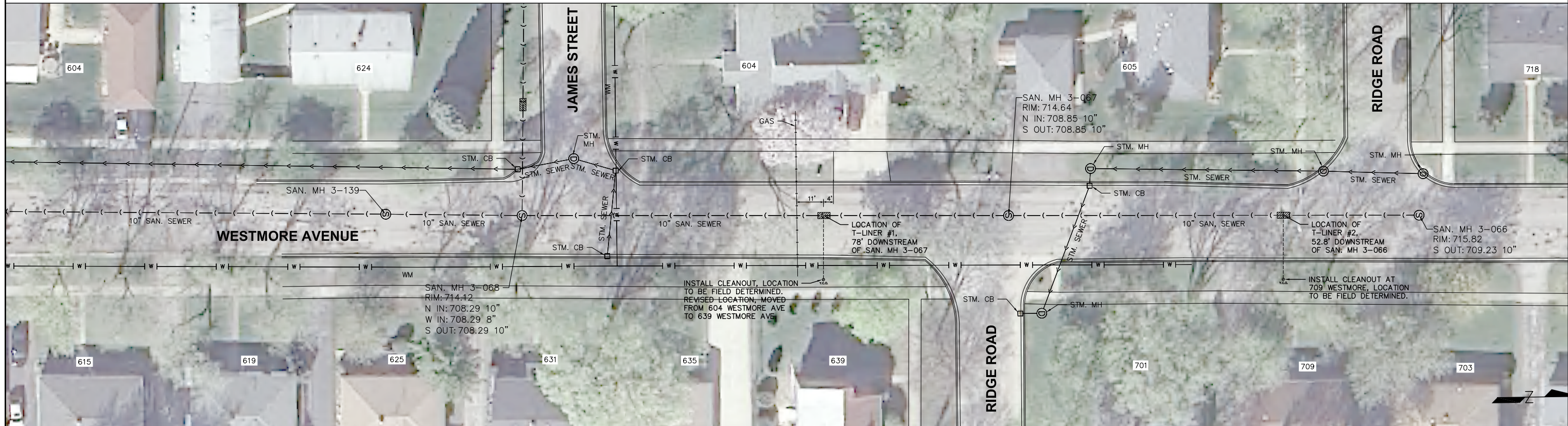
VILLAGE OF VILLA PARK  
SANITARY SEWER REHAB

POINT REPAIR #1  
JAMES STREET

SCALES	COUNTY	TOTAL SHEETS	SHEET NO.
HORIZONTAL: 1" = 20'	DUPAGE		
VERTICAL: 1" = 5'	STA.	TO STA.	
PROJECT NO. 11-1508-35			

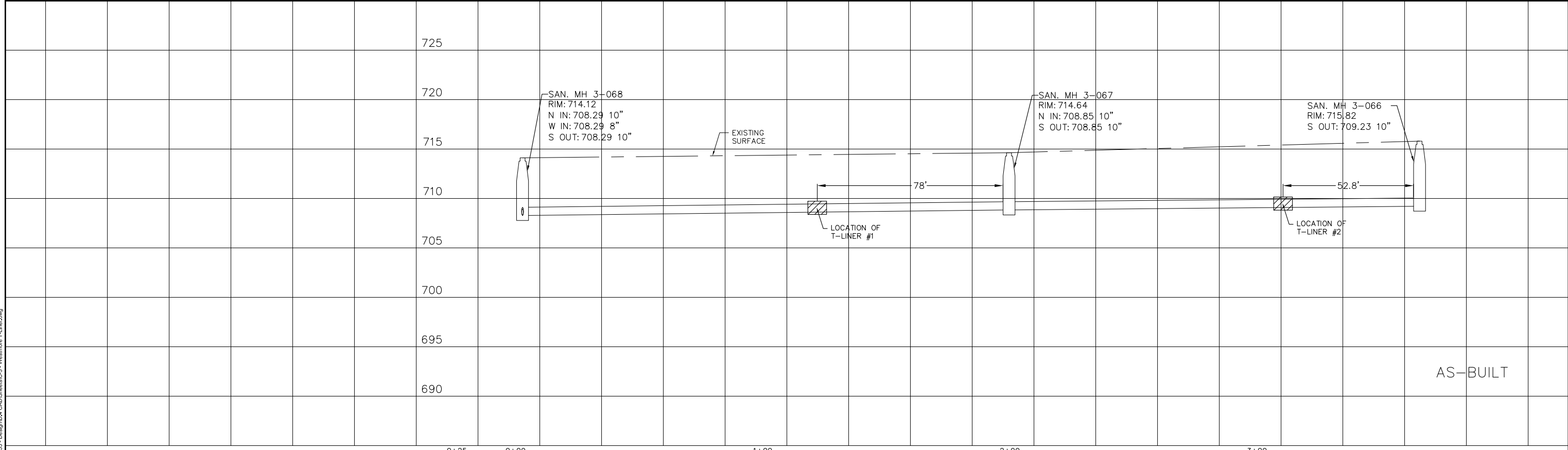
AS-BUILT





JOB NO.	USMH	DSMH	REPAIR LENGTH	SERVICE	DEPTH	SURFACE	PIPE LENGTH
TL1	3-067	3-068	TBD	1	5.80'	STREET	197'

JOB NO.	USMH	DSMH	REPAIR LENGTH	SERVICE	DEPTH	SURFACE	PIPE LENGTH
TL2	3-066	3-067	TBD	1	6.32'	STREET	166'



C:\Village\_Park\_IL11-150835-Design\04-CAD\Sheets\CS - Westmore T-Liner.dwg

DESIGNED: C MORLEY	1/8/15 - REVISED LOCATION OF T-LINER AT 639
DRAWN: R JOHNSON	1/8/15 - ADDED T-LINER AT 709
CHECKED: C MORLEY	
DATE: MAY 7, 2014	



VILLAGE OF VILLA PARK  
SANITARY SEWER REHAB

T-LINER #1 & T-LINER #2  
WESTMORE AVENUE

SCALES	COUNTY	TOTAL SHEETS	SHEET NO.
HORIZONTAL: 1" = 20'	DUPAGE		
VERTICAL: 1" = 5'	STA.	TO STA.	
PROJECT NO. 11-1508-35			