



The Choice for Collection System Solutions



The Choice for Collection System Solutions

Village of Villa Park

Public Meeting for the

Long-Term Control Plan (LTCP), CSO O&M Plan,

and Pollution Prevention Plan (PPP)

Presented by
Vinnie Bergl, P.E.
April 27, 2015

What Is the LTCP?

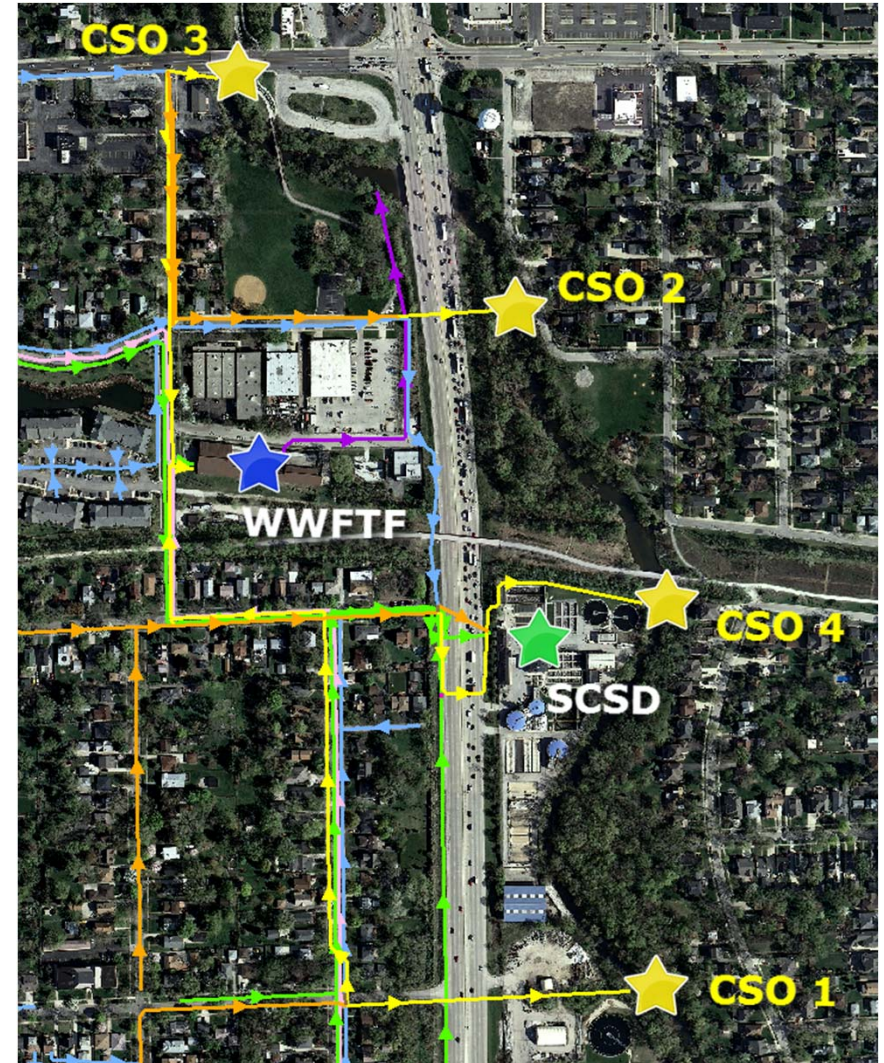
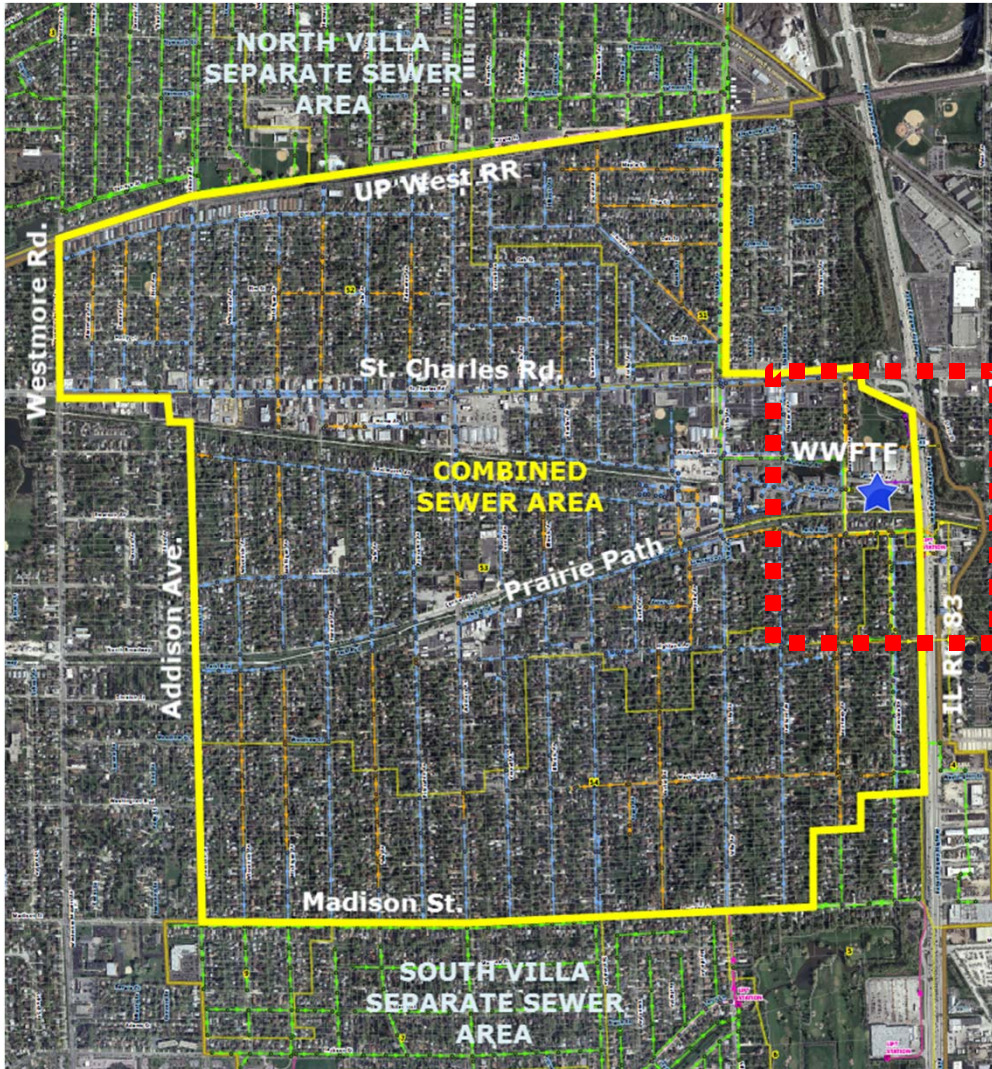
- Illinois EPA requirement – federal Clean Water Act regulations
- Condition of Village's permit to operate Wet-Weather Flow Treatment Facility (WWFTF)



What Is the LTCP?

- Illinois EPA requirement – federal Clean Water Act regulations
- Condition of Village's permit to operate Wet-Weather Flow Treatment Facility (WWFTF)
- Combined sewer (CS) area only
- Plan to limit the occurrence of combined sewer overflows (CSOs)

Combined Sewer Area



CSOs in Villa Park

- Gradual separation with road projects (1980 to present) – CS system nearly 80% separated
- CSO events increasingly infrequent
- IEPA requires 4 or fewer CSO events per year
- LTCP will provide blueprint to meet CSO target

What Are the CSO O&M Plan and Pollution Prevention Plan (PPP)?

- Standing documents
- Outline ongoing programs and activities
- Purpose is to minimize frequency and environmental impact of CSOs
- Current versions adopted by Village in 1998
- Update required for LTCP

Current CSO Operation and Maintenance (O&M) Plan

- Inventory of system facilities
 - CSO control structures
 - WWFTF operation and treatment process
- Sewer use ordinances
 - Regulation of industrial discharges
 - Sump pump disconnection program
- Routine maintenance procedures
 - Catch basin and street cleaning
 - Sewer cleaning, flushing, and televising
 - Repairs

- **Public participation programs**
 - Curbside recycling
 - DuPage Co. Hazardous Household Waste (HHW) program
- **Village activities**
 - Weekly to monthly street sweeping
 - Fall leaf sweeping
 - Inlet stenciling to discourage illegal dumping
 - Creek and shoreline inspection

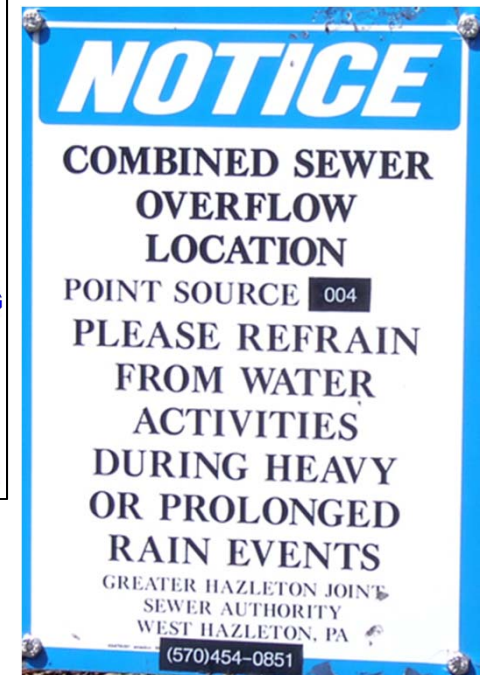
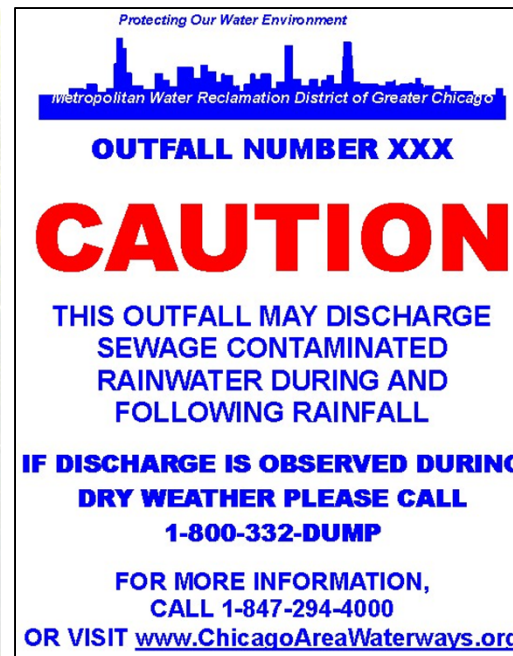
- E-waste recycling program – monthly drop-off
- Curbside yard waste collection (Yellow Yard Waste Tag program)
- Use of BEET HEET concentrate for de-icing
- Illicit Discharge Detection and Elimination (IDDE) ordinance
- Construction site best management practices (BMPs) to prevent pollution from debris

CSO O&M Plan Updates

- Fats, oils, and grease (FOG) control
 - Priority flushing list
 - Enzyme treatments
- Sewer backup response plan – investigation and reporting
- Upgraded real-time monitoring of CSOs with telemetry
- Updated meter data and hydraulic model (2013)
- Public notification for CSOs (new requirement)

Public Notification of CSOs

- Add place on website to post CSO occurrence
- Post physical signage at CSO outfalls



Next Steps

CSO O&M Plan and PPP

- Incorporate comments from tonight's meeting
- Submit revised documents to IEPA
- Implement notification procedures

Long-Term Control Plan

- Identify other improvements needed to meet IEPA's CSO target
- Complete and submit LTCP before April 2016



The Choice for Collection System Solutions

Comments and Questions