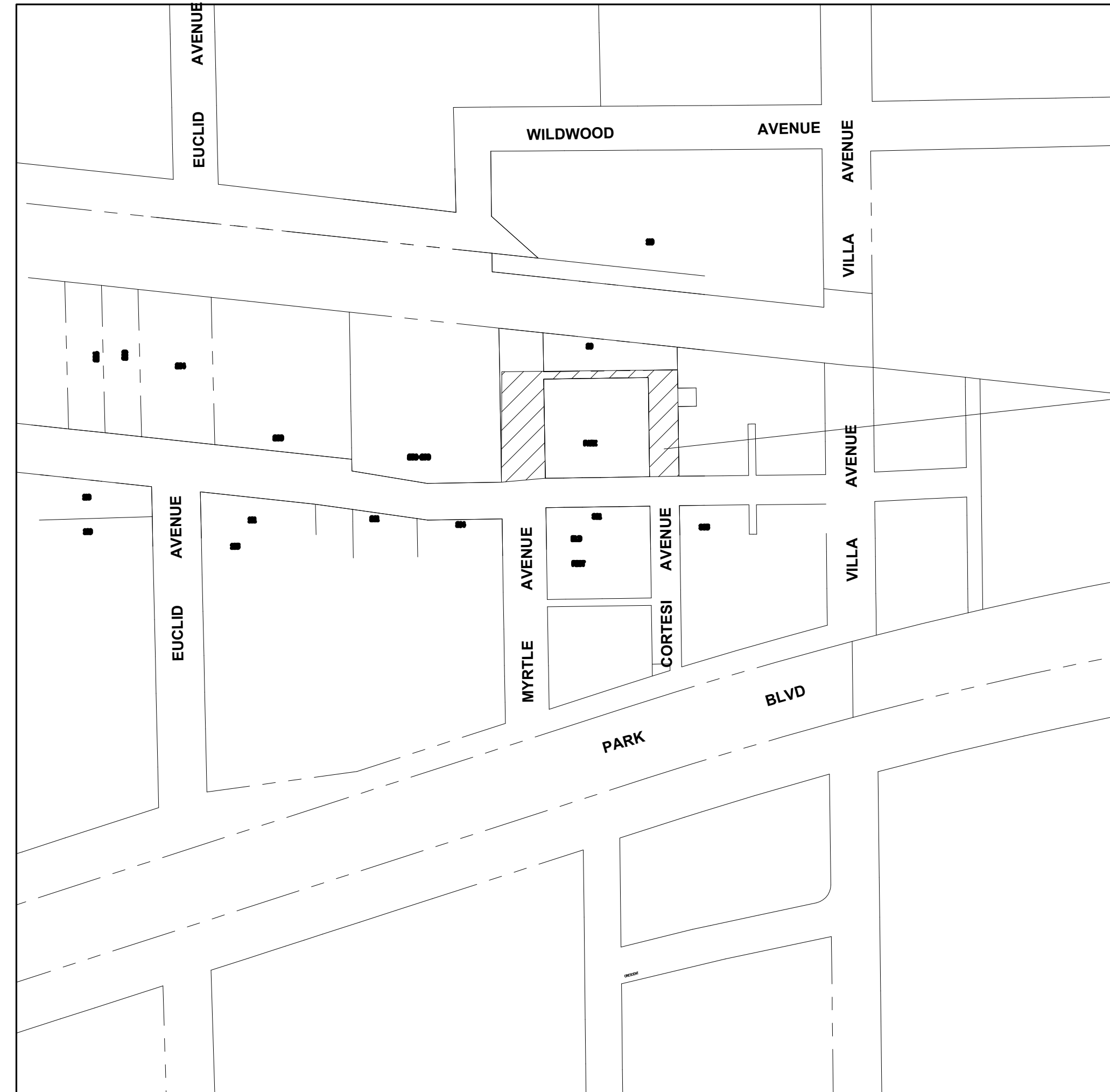


PLANS FOR PROPOSED IMPROVEMENT KENILWORTH PARK PROJECT VILLAGE OF VILLA PARK ILLINOIS

CONTRACT #PW 14-0053



LOCATION MAP

PROJECT LOCATION



PREPARED BY THE VILLAGE OF VILLA PARK
PUBLIC WORKS DEPARTMENT - ENGINEERING DIVISION

BENCHMARKS:

TBM #127

TOP OF WATER TABLE AT THE NE CORNER ENTRANCE (45° WALL)
AT #320 S. ARDMORE AVENUE. ELEVATION 707.36

TBM #45

N. RIM OF SANITARY MANHOLEAT #1015 S. VILLA AVENUE
ELEVATION 674.02

SITE BENCHMARK

CENTER OF STORM MANHOLE FRAME AND LID LOCATE AT MIDDLE OF
INTERSECTION OF E. KENILWORTH AVE. AND S. MYRTLE AVE. ELEVATION 677.41

BENCHMARKS:

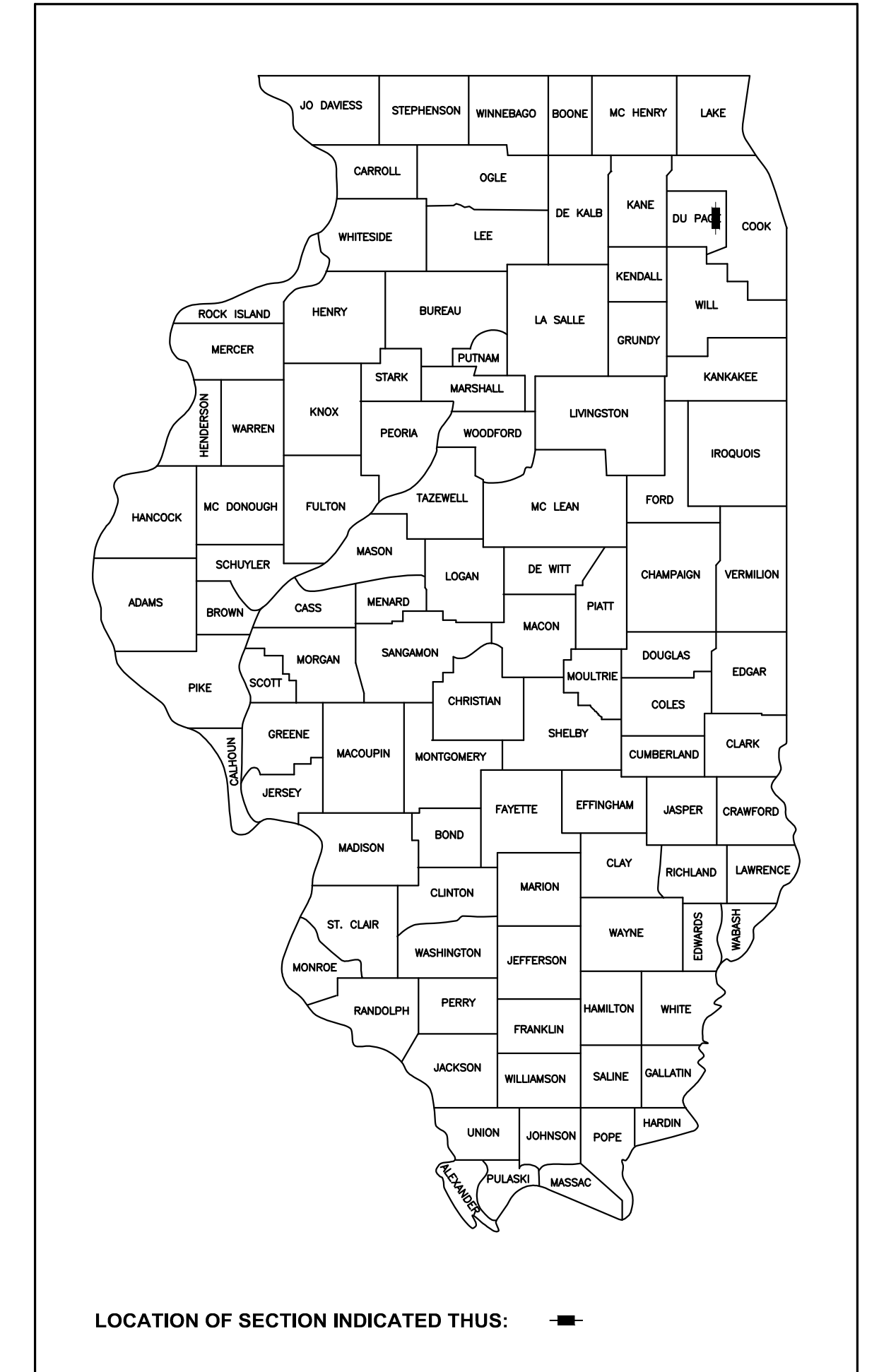
SITE BENCHMARK # 1:

VILLAGE OFFICIALS

VILLAGE PRESIDENT
TRUSTEE
TRUSTEE
TRUSTEE
TRUSTEE
TRUSTEE
TRUSTEE
VILLAGE CLERK
VILLAGE MANAGER
PUBLIC WORKS DIRECTOR
ASST. VILLAGE ENGINEER

DEBORAH BULLWINKEL
CHRIS J. AIELLO
ROBERT WAGNER
ALBERT BULTHUIS
JOHN DAVIS
DONALD KASE
ROBERT TAGLIA
HOSANNA KORYNECKY
RICH KEEHNER, JR.
VYDAS JUSKELIS
RICH SALERNO

STATE MAP



LOCATION OF SECTION INDICATED THIS: ■

SHEET INDEX

SHEET NO	DESCRIPTION
01	COVER SHEET
02	GENERAL NOTES
03	PROPOSED IMPROVEMENT PLAN ALTERNATE 1
04	PROPOSED IMPROVEMENT PLAN ALTERNATE 2
05	CONSTRUCTION DETAILS SHEET 1
06	CONSTRUCTION DETAILS SHEET 2

_____ VYDAS JUSKELIS	_____ DATE
ILLINOIS LICENSE NUMBER:	_____ 062-045747
DATE OF EXPIRATION:	_____ 11/30/2015
<small>THESE PLANS OR ANY PART THEREOF SHALL BE CONSIDERED VOID WITHOUT THE SIGNATURE, SEAL AND EXPIRATION DATE OF THE ENGINEER</small>	

GENERAL NOTES

GENERAL

ALL REFERENCES TO "STANDARD SPECIFICATIONS" IN THESE GENERAL NOTES SHALL BE INTERPRETED TO MEAN THE "STANDARD SPECIFICATIONS FOR ROAD AND BRIDGE CONSTRUCTION" LATEST EDITION, AS ADOPTED BY THE ILLINOIS DEPARTMENT OF TRANSPORTATION.

ALL REFERENCES TO "ENGINEER" SHALL BE INTERPRETED TO MEAN THE RESIDENT ENGINEER.

ALL CONSTRUCTION SHALL BE IN ACCORDANCE WITH THE "STANDARD SPECIFICATIONS FOR ROAD AND BRIDGE CONSTRUCTION", LATEST EDITION; THE "SUPPLEMENTAL SPECIFICATIONS AND RECURRING SPECIAL PROVISIONS", LATEST EDITION; THE "ILLINOIS MANUAL ON UNIFORM TRAFFIC CONTROL DEVICES FOR STREETS AND HIGHWAYS" (MUTCD), LATEST EDITION; THE "STANDARD SPECIFICATIONS FOR WATER AND SEWER MAIN CONSTRUCTION IN ILLINOIS", LATEST EDITION; AND THE DETAILS IN THE PLANS EXCEPT AS MODIFIED TO CONFORM WITH VILLAGE OF VILLA PARK REQUIREMENTS IN THE SPECIFICATIONS INCLUDED AS A PART OF THE CONTRACT DOCUMENTS.

IT SHALL BE THE CONTRACTOR'S RESPONSIBILITY TO VERIFY ALL DIMENSIONS AND CONDITIONS EXISTING IN THE FIELD PRIOR TO ORDERING MATERIALS AND BEGINNING CONSTRUCTION.

THE CONTRACTOR SHALL COORDINATE CONSTRUCTION ACTIVITIES WITH UTILITY COMPANIES. THE LOCATION OF PUBLIC OR PRIVATE UTILITIES SHOWN ON THE PLANS ARE APPROXIMATE AND THE ENGINEER DOES NOT GUARANTEE THEIR ACCURACY. OTHER UTILITIES MAY BE PRESENT. THE CONTRACT WILL BE REQUIRED TO CONTACT J.U.L.I.E. AND ASCERTAIN THE EXACT LOCATION OF SUCH UTILITIES AND EXERCISE CARE DURING HIS CONSTRUCTION OPERATIONS SO AS NOT TO DAMAGE THEM IN ACCORDANCE WITH THE SPECIAL PROVISIONS AND APPLICABLE ARTICLES INCLUDED IN THE "STANDARD SPECIFICATIONS" INCLUDING, BUT NOT LIMITED TO, ARTICLES 105.07 AND 107.31. THE CONTRACTOR SHALL BE RESPONSIBLE FOR CONTACTING THE OWNERS OF ALL EXISTING UTILITIES SO THAT THEIR FACILITIES MAY BE LOCATED AND ADJUSTED OR MOVED, IF NECESSARY, PRIOR TO THE START OF THE CONSTRUCTION OPERATIONS.

BEFORE STARTING ANY EXCAVATION, THE CONTRACTOR SHALL CALL "JULIE" AT 1-800-892-0123 AND THE VILLAGE OF VILLA PARK FOR FIELD LOCATIONS OF BURIED UTILITIES (48 HOURS NOTIFICATION IS REQUIRED).

ALL UTILITY COMPANIES AND LOCAL POLICE AND FIRE DEPARTMENTS SHALL BE NOTIFIED BY THE CONTRACTOR AT LEAST 3 DAYS PRIOR TO THE START OF CONSTRUCTION.

ALL REFERENCES IN THESE PLANS TO BITUMINOUS MATERIALS SHALL BE INTERPRETED TO MEAN HOT-MIX ASPHALT IN ACCORDANCE WITH THE STANDARD SPECIFICATIONS.

NO WORK SHALL COMMENCE UNTIL TRAFFIC CONTROL REQUIREMENTS ARE MET TO THE SATISFACTION OF THE ENGINEER.

THE CONTRACTOR SHALL SAWCUT ALL PAVEMENT, DRIVEWAYS, DRIVEWAY APRONS, SIDEWALKS, CURB & GUTTER AND OTHER MATERIALS AS INDICATED ON THE PLANS OR AT ALL LIMITS OF REMOVAL TO SEPARATE THE EXISTING MATERIAL TO BE REMOVED BY MEANS OF AN APPROVED SAW TO FULL-DEPTH OF THE MATERIAL BEING REMOVED AS SHOWN ON THE PLANS OR AS DIRECTED BY THE ENGINEER. THIS WORK SHALL BE CONSIDERED AS INCIDENTAL TO THE PAY ITEM INVOLVED.

WHERE SECTION OR SUBSECTION MONUMENTS ARE ENCOUNTERED, THE ENGINEER SHALL BE NOTIFIED BEFORE SUCH MONUMENTS ARE REMOVED. THE CONTRACTOR SHALL CAREFULLY PRESERVE ALL PROPERTY MARKERS AND MONUMENTS UNTIL THE OWNER, AN AUTHORIZED SURVEYOR OR AGENT HAS WITNESSED OR OTHERWISE REFERENCED EACH LOCATION.

VOIDS IN THE SUBGRADE CREATED BY THE REMOVAL OF EXISTING PAVEMENT SHALL BE BACKFILLED WITH SUITABLE EMBANKMENT MATERIAL AT NO ADDITIONAL COST TO THE CONTRACT.

PROTECTIVE COAT SHALL BE APPLIED TO ALL NEW GUTTER FLAGS, FACES AND TOPS OF CURBS, NEW P.C.C. SIDEWALKS, CONCRETE EDGING AND P.C.C. DRIVEWAY PAVEMENT, IN ACCORDANCE WITH THE "STANDARD SPECIFICATIONS" AND AS DIRECTED BY THE ENGINEER. THIS WORK SHALL BE CONSIDERED INCIDENTAL TO THE PAY ITEM INVOLVED.

IF, IN THE ENGINEER'S OPINION, WORK SHOWN ON THE PLANS IS NOT REQUIRED, THE QUANTITIES FOR THOSE PAY ITEMS WILL BE DEDUCTED FROM THE CONTRACT AND NO ADDITIONAL COMPENSATION WILL BE ALLOWED.

ONE SET OF APPROVED PLANS MUST BE ON SITE AT ALL TIMES.

ALL SURPLUS, UNSUITABLE AND WASTE MATERIAL SHALL BE LEGALLY DISPOSED OF OUTSIDE THE LIMITS OF THE PROJECT IN A MANNER THAT PUBLIC OR PRIVATE PROPERTY WILL NOT BE DAMAGED OR ENDANGERED AT THE CONTRACTOR'S EXPENSE.

SIDEWALK RAMPS AND DEPRESSED CURBS SHALL BE PROVIDED AT ALL INTERSECTION LOCATIONS, AT THE LOCATIONS SHOWN ON THE PLANS OR AS DIRECTED BY THE ENGINEER. SIDEWALK RAMPS AND DEPRESSED CURBS SHALL BE CONSTRUCTED IN ACCORDANCE WITH THE APPLICABLE STATE STANDARDS, THE DETAILS SHOWN OR AS DIRECTED BY THE ENGINEER.

ANY SOIL EROSION CONTROL MEASURES THAT ARE DEEMED NECESSARY BY THE VILLAGE ENGINEER WILL BE IMPLEMENTED IMMEDIATELY BY THE CONTRACTOR.

CURB AND GUTTER

NO P.C. CONCRETE SHALL BE PLACED UNTIL THE FORMS HAVE BEEN INSPECTED FOR LINE, GRADE AND SUBGRADE CONDITIONS BY THE RESIDENT ENGINEER. IT IS SUGGESTED THAT THE INSPECTIONS BE ARRANGED FOR AT LEAST 24 HOURS IN ADVANCE OF THE P.C. CONCRETE PLACEMENT.

JOINTS SHALL BE PLACED ACCORDING TO VILLAGE STANDARD DRAWING. IN ADDITION, 1 INCH EXPANSION JOINTS SHALL BE PLACED EVERY 60 FEET.

WATER MAIN, STORM AND SANITARY SEWERS, WATER MAIN STRUCTURES, AND UTILITIES

MATERIALS AND INSTALLATION FOR ALL WATER AND SEWER RELATED WORK WILL BE IN ACCORDANCE WITH THE "STANDARD SPECIFICATIONS FOR WATER AND SEWER MAIN CONSTRUCTION IN ILLINOIS", LATEST EDITION, AND THE AMERICAN WATER WORKS ASSOCIATION EXCEPT AS MODIFIED TO CONFORM WITH VILLAGE PARK REQUIREMENTS.

THE CONTRACTOR SHALL BE RESPONSIBLE FOR CONTACTING LOCAL AGENCIES MAINTAINING STORM & SANITARY SEWERS AND WATER MAINS TO VERIFY THE MATERIALS AND METHODS ALLOWED FOR THE ADJUSTMENT OR RELOCATION OF THEIR FACILITIES, IF NECESSARY.

THE CONTRACTOR SHALL BE RESPONSIBLE FOR LOCATING ALL WATER AND SANITARY SERVICES PRIOR TO EXCAVATION OF UTILITY TRENCHES.

FRAME ELEVATIONS GIVEN ON THE PLANS ARE ONLY TO ASSIST THE CONTRACTOR IN DETERMINING THE APPROXIMATE OVERALL HEIGHT OF THE STRUCTURE. THE ADJUSTMENT OF FRAMES ON ALL NEW STRUCTURES SHALL BE TO THE PROPOSED SURFACE ELEVATION WITH P.C. CONCRETE COLLARS. THE TWO ADJUSTMENTS SHALL BE INCLUDED IN THE COST OF THE NEW STRUCTURES.

THE CONTRACTOR SHALL MAINTAIN WATER SERVICE AT ALL TIMES EXCEPT SCHEDULED SHUT DOWNS FOR CONNECTIONS LIMITED TO 6 HOURS AT A TIME.

THE CONTRACTOR SHALL MAINTAIN FLOWS THROUGH EXISTING SEWER SYSTEMS AT ALL TIMES. THE EXISTING STRUCTURES SHALL BE INSPECTED BEFORE CONSTRUCTION STARTS. ANY ACCUMULATION OF MATERIAL IN THE STRUCTURE DUE TO CONSTRUCTION OPERATIONS SHALL BE REMOVED BY THE CONTRACTOR AT HIS EXPENSE.

WHEN EXISTING DRAINAGE FACILITIES ARE DISTURBED, THE CONTRACTOR SHALL PROVIDE AND MAINTAIN TEMPORARY OUTLETS AND CONNECTIONS FOR ALL PRIVATE OR PUBLIC DRAINS, SEWERS OR STRUCTURES. HE SHALL PROVIDE FACILITIES TO TAKE IN ALL STORM WATER WHICH WILL BE RECEIVED BY THESE DRAINS AND SEWERS, AND DISCHARGE THE SAME. HE SHALL PROVIDE AND MAINTAIN AN EFFICIENT PUMPING PLANT, IF NECESSARY, AND A TEMPORARY OUTLET. HE SHALL BE PREPARED AT ALL TIMES TO DISPOSE OF THE WATER RECEIVED FROM TEMPORARY CONNECTIONS UNTIL SUCH TIME AS THE PERMANENT CONNECTIONS WITH SEWERS ARE BUILT AND IN SERVICE. THIS WORK WILL NOT BE PAID FOR SEPARATELY, BUT SHALL BE CONSIDERED INCIDENTAL TO THE CONTRACT.

THE CONTRACTOR SHALL FURNISH ALL LABOR, EQUIPMENT AND MATERIAL NECESSARY FOR DEWATERING TRENCH EXCAVATIONS AS WELL AS SHORING TRENCH WALLS DURING CONSTRUCTION. COMPLIANCE WITH THE ABOVE WILL BE INCIDENTAL TO THE UTILITY INSTALLATIONS.

ALL ABANDONED WATER MAINS, SEWER PIPES & INVERTS SHALL BE PLUGGED WITH BRICK AND CLASS SI CONCRETE TO THE SATISFACTION OF THE ENGINEER. THIS WORK SHALL BE CONSIDERED INCIDENTAL TO THE CONTRACT.

EXISTING WATER AND SANITARY SEWER SERVICES WILL NOT BE REUSED WITHOUT A WRITTEN APPROVAL FROM THE WATER/WASTEWATER SUPERINTENDENT.

CONTRACTOR SHALL PROVIDE ALL MATERIALS NECESSARY FOR WATER OR SEWER MAIN INSTALLATION, INCLUDING, BUT NOT LIMITED TO, PIPE, GASKETS, FITTINGS, COUPLINGS, BENDS, TEES, WYES, SADDLES, CROSSES, REDUCERS, BOLTS, NUTS, HARDWARE, BAGS, AND OTHER MATERIALS AS MAY BE NECESSARY FOR THE COMPLETION OF WATER OR SEWER MAIN INSTALLATION. THE PROVISION AND INSTALLATION OF SUCH MATERIALS SHALL BE CONSIDERED INCIDENTAL TO WATER OR SEWER MAIN INSTALLATION OR INCIDENTAL TO OTHER SUCH RELATED PAY ITEMS AS MAY BE INCLUDED IN THE CONTRACT.

BAND-SEAL FLEXIBLE CONNECTORS (NON-SHEAR MISSION COUPLINGS) WILL BE USED TO JOIN PIPES OF DISSIMILAR MATERIALS.

ALL FRAMES WITH CLOSED LIDS TO BE FURNISHED AS A PART OF THIS CONTRACT FOR CONSTRUCTION, ADJUSTMENT OR RECONSTRUCTION OF ANY MANHOLES, CATCH BASIN, INLET, VALVE VAULT, OR METER VAULT SHALL HAVE CAST INTO THE LID ONE OF THE FOLLOWING WORDS: ALL LIDS TO BE USED ON STORM SEWER STRUCTURES SHALL BEAR THE WORD "STORM". ALL LIDS TO BE USED ON SANITARY SEWER STRUCTURES SHALL BEAR THE WORD "SANITARY". ALL LIDS TO BE USED ON WATER SYSTEM STRUCTURES SHALL BEAR THE WORD "WATER". THIS WORK SHALL BE CONSIDERED INCIDENTAL TO THE FRAME AND GRATE OR FRAME AND CLOSED LID PROVIDED.

THE CONTRACTOR SHALL RECEIVE NO ADDITIONAL COMPENSATION FOR CONSTRUCTION STAGING NECESSARY TO ACCOMMODATE UTILITY RELOCATION OR ADJUSTMENT AND / OR FOR DELAYS CAUSED BY UTILITY RELOCATION OR ADJUSTMENT.

RETAINER GLANDS FOR MECHANICAL JOINT FITTINGS EXCEPT COUPLINGS SHALL BE DUCTILE IRON MEGALUG SERIES 1100 OR APPROVED EQUAL.

FIRE HYDRANTS SHALL BE BAGGED WITH APPROVED BAGS TO INDICATE THEY ARE NOT IN SERVICE UNTIL ALL TESTING AND DISINFECTION HAS BEEN COMPLETED AND NEW WATER MAIN SECTION IS IN SERVICE.

FIRE HYDRANTS SHALL BE PROTECTED DURING BACKFILL OPERATIONS AND DURING OTHER OPERATIONS WHICH MAY CAUSE DAMAGE TO FIRE HYDRANTS. SUCH PROTECTION SHALL CONSIST OF PLACING A HARD PLASTIC COVER OR OTHER PROTECTIVE COVER AS APPROVED BY THE ENGINEER OVER THE HYDRANT FOR THE DURATION OF BACKFILL OPERATIONS AND OTHER POTENTIALLY DAMAGING OPERATIONS.

ALL WATER MAIN SHUTDOWNS WILL BE PERFORMED BY VILLAGE PERSONNEL ONLY. THE CONTRACTOR SHALL GIVE THE PUBLIC WORKS DEPARTMENT A MINIMUM OF 24 HOURS NOTICE PRIOR TO A REQUESTED SHUTDOWN.

THE CONTRACTOR SHALL NOT OPEN OR CLOSE ANY WATER VALVES OR FIRE HYDRANTS. ALL VALVE AND HYDRANT OPERATIONS WILL BE PERFORMED BY VILLAGE PERSONNEL ONLY.

THE PUBLIC WORKS DEPARTMENT SHALL BE NOTIFIED BY TELEPHONE AT (630) 834-8505 TWENTY-FOUR (24) HOURS IN ADVANCE FOR INSPECTIONS AND FORTY-EIGHT (48) HOURS IN ADVANCE FOR WATER TAPS.

ALL MANHOLES, BUFFALO BOXES OR OTHER STRUCTURES WITHIN A PCC DRIVEWAY SHALL BE BOXED OUT WITH 1" EXPANSION MATERIAL.

THE REMOVAL AND DISPOSAL OF AN EXISTING SEWER, WATER MAIN, OR STRUCTURE DURING CONSTRUCTION OF A PROPOSED WATER MAIN, SEWER OR STRUCTURE IN THE SAME TRENCH SHALL BE CONSIDERED INCIDENTAL TO THE INSTALLATION OF THE PROPOSED WATER MAIN, SEWER OR STRUCTURE.

ALL CASTINGS SHALL REMAIN THE PROPERTY OF OWNER FOLLOWING THEIR REMOVAL. REMOVED CASTINGS SHALL BE STOCKPILED AT ONE LOCATION ONSITE BY THE CONTRACTOR. THE OWNER SHALL REMOVE THE CASTINGS THEY WISH TO KEEP, THE REMAINING CASTINGS SHALL BECOME THE PROPERTY OF THE CONTRACTOR.

DEBRIS DEPOSITED IN THE FLOW LINE OF ANY STRUCTURES SHALL BE REMOVED AT THE END OF EACH WORKING DAY. AT THE CLOSE OF CONSTRUCTION OPERATIONS ALL STRUCTURES SHALL BE FREE FROM DIRT AND DEBRIS. THIS WORK WILL NOT BE PAID FOR SEPARATELY BUT SHALL BE INCIDENTAL TO THE CONTRACT.

REMOVAL AND DISPOSAL OF MATERIAL

CONTRACTOR SHALL PROVIDE FOR THE REMOVAL AND DISPOSAL OF ALL MATERIAL WHICH IS NOT TO REMAIN ON SITE FOLLOWING THE COMPLETION OF WORK. SUCH REMOVAL AND DISPOSAL SHALL BE IN COMPLIANCE WITH ALL APPLICABLE FEDERAL, STATE AND LOCAL LAWS AND REGULATIONS. SUCH MATERIAL SHALL INCLUDE, BUT SHALL NOT BE LIMITED TO, PAVEMENT, PAVEMENT REINFORCEMENT, PAVEMENT SUBBASE, PAVEMENT SUBGRADE, MATERIAL EXCAVATED FROM TRENCHES, DRIVEWAYS, DRIVEWAY APRONS, SIDEWALK, CURB AND GUTTER, PARKWAYS, AND OTHER MATERIAL WHOSE REMOVAL AND DISPOSAL IS DETERMINED BY ENGINEER TO BE NECESSARY FOR THE COMPLETION OF THIS WORK. THE REMOVAL AND DISPOSAL OF SUCH MATERIAL SHALL BE CONSIDERED AS INCLUDED IN REMOVAL PAY ITEMS AS MAY BE INCLUDED IN THE CONTRACT, OR SHALL BE CONSIDERED AS INCIDENTAL TO WORK BEING PERFORMED IF NO REMOVAL PAY ITEM EXISTS WHICH INCLUDES SUCH REMOVAL. CONTRACTOR SHALL PROVIDE FOR THE COMPLETION OF ANY PRELIMINARY SITE EVALUATIONS, ENVIRONMENTAL TESTING, OR CERTIFICATIONS WHICH MAY BE REQUIRED BY ANY CLEAN CONSTRUCTION AND DEMOLITION DEBRIS (CDD) LANDFILLS AS A PRE-REQUISITE FOR DISPOSAL AT SUCH LANDFILLS. THE COMPLETION OF THESE EFFORTS SHALL BE CONSIDERED TO BE INCIDENTAL TO THE CONTRACT.

MATERIAL WHICH IS NOT TO REMAIN ON SITE FOLLOWING THE COMPLETION OF WORK, WHICH IS REMOVED FROM THE SITE FOR DISPOSAL AND IS REJECTED FOR DISPOSAL AT A CLEAN CONSTRUCTION AND DEMOLITION DEBRIS (CDD) LANDFILL WILL BE PAID FOR AT THE CONTRACT UNIT BID PRICE PER TON FOR "NON-SPECIAL WASTE DISPOSAL". SUCH UNIT BID PRICE SHALL INCLUDE ALL COSTS ASSOCIATED WITH THE HANDLING AND DISPOSAL OF SUCH MATERIAL, INCLUDING, BUT NOT LIMITED TO, TRANSPORTING, STOCKPIILING, LOADING, UNLOADING, LANDFILL FEES AND EXPENSES, MATERIAL AND ENVIRONMENTAL TESTING, AND ADMINISTRATIVE AND CLERICAL FEES AND EXPENSES. NO ADDITIONAL COMPENSATION WILL BE MADE FOR THE HANDLING OR DISPOSAL OF SUCH MATERIAL. MATERIAL WILL NOT BE PAID FOR AS "NON-SPECIAL WASTE DISPOSAL" UNLESS THAT SPECIFIC MATERIAL WAS FIRST REJECTED FOR DISPOSAL AT A CLEAN CONSTRUCTION AND DEMOLITION DEBRIS (CDD) LANDFILL. CONTRACTOR SHALL PROVIDE NECESSARY PROOF AND DOCUMENTATION OF SUCH REJECTION TO THE SATISFACTION OF ENGINEER.

EPA

ALL WATER MAINS SHALL BE SATISFACTORILY DISINFECTED PRIOR TO USE IN ACCORDANCE WITH THE REQUIREMENTS OF AWWA C651-99. AT LEAST ONE SET OF SAMPLES SHALL BE COLLECTED FROM EVERY 1,200 FEET OF NEW WATER MAIN, PLUS ONE SET FROM THE END OF THE LINE AND AT LEAST ONE SET FROM EACH BRANCH. SATISFACTORY DISINFECTION SHALL BE DEMONSTRATED IN ACCORDANCE WITH THE REQUIREMENTS OF 35 ILL. ADM. CODE 652.203.

BACKFILL

TRENCH BACKFILL MATERIAL SHALL BE CA-6 UNDER AND WITHIN THREE FEET OF PAVED AREAS (INCLUDING, BUT NOT LIMITED TO, STREETS, DRIVEWAYS, CURB AND GUTTER, AND SIDEWALK). JOB EXCAVATED APPROVED MATERIAL MAY BE USED OUTSIDE OF THE PAVEMENT INFLUENCE ZONE.

TRENCH BACKFILL SHALL BE CONSIDERED INCIDENTAL TO PROPOSED WATER MAIN, SEWER MAIN, WATER SERVICES, SEWER SERVICES, AND ANY OTHER UTILITIES BEING INSTALLED OR REMOVED.

GRANULAR TRENCH BACKFILL WILL BE MECHANICALLY COMPACTED IN LAYERS OF 12" MAXIMUM, LOOSE MEASURE, TO 95% OF STANDARD DENSITY (ASTM D698).

PAVEMENT

ALL PAVING MATERIALS INCORPORATED INTO THE PROJECT SHALL BE FROM ILLINOIS DEPARTMENT OF TRANSPORTATION APPROVED STOCKPILES UNLESS OTHERWISE APPROVED BY THE ENGINEER.

VEHICULAR ACCESS TO ALL ROADWAYS AND DRIVEWAYS SHALL BE MAINTAINED AT ALL TIMES EXCEPT WHEN IMMEDIATE CONSTRUCTION EFFORTS PREVENT IT. CONTRACTOR SHALL FILL ALL TRENCHES TO FINISHED PAVEMENT GRADES USING APPROVED TRENCH BACKFILL AND SHALL PROPERLY GRADE, COMPACT AND MAINTAIN SAID BACKFILL UNTIL PERMANENT PAVEMENT OR DRIVEWAY RESTORATION IS COMPLETED. THE FURNISHING, PLACEMENT, MAINTENANCE AND REMOVAL OF AGGREGATE FOR TEMPORARY ACCESS SHALL BE CONSIDERED INCIDENTAL TO THE CONTRACT.

SUBBASE SHALL BE MECHANICALLY COMPACTED BEFORE PLACING CURB AND GUTTER.

THE NOMINAL THICKNESSES FOR BASE AND SURFACE COURSES ARE SHOWN ON THE TYPICAL SECTIONS, STANDARDS, OR DETAILS. THE CONSTRUCTED THICKNESS OF THE ABOVE ITEMS SHALL NOT BE LESS THAN 90 PERCENT OF THE NOMINAL THICKNESS AT ANY LOCATION. AVERAGE THICKNESS FOR THE LIFTS SHALL NOT BE LESS THAN 98% OF THE NOMINAL THICKNESS.

NO P.C. CONCRETE SHALL BE PLACED UNTIL THE FORMS HAVE BEEN INSPECTED FOR LINE, GRADE AND SUBGRADE CONDITIONS BY THE RESIDENT ENGINEER. IT IS SUGGESTED THAT THE INSPECTIONS BE ARRANGED FOR AT LEAST 24 HOURS IN ADVANCE OF THE P.C. CONCRETE PLACEMENT.

PAVEMENT REMOVAL SHALL BE STAGED WITH UTILITY CONSTRUCTION, AS DIRECTED BY THE ENGINEER. COMPLETE PAVEMENT REMOVAL PRIOR TO UTILITY CONSTRUCTION WILL NOT BE ALLOWED.

ALL SIDEWALKS WILL MEET EXISTING WIDTHS AND SHALL HAVE A MINIMUM THICKNESS OF FOUR INCHES (4") EXCEPT AT ANY EXISTING OR PROPOSED DRIVEWAY(S) THE THICKNESS SHALL BE SIX INCHES (6"). BEDDING WILL BE A MINIMUM OF 4" OF CA-6/GRADE 8. EXISTING SIDEWALKS AND CURB AND GUTTER SECTIONS SHALL BE REPLACED AS SHOWN ON THE PLANS OR AS DIRECTED BY THE ENGINEER.

DRIVEWAYS TO BE REPLACED WILL BE CONSTRUCTED AS FOLLOWS:

RESIDENTIAL:	BITUMINOUS CEMENT CONCRETE	4' SURFACE COURSE 6' CA-6, GRADE 8 STONE 6' CLASS SI
	PORTLAND CEMENT CONCRETE	4' CA-6, GRADE 8 STONE

ALL CONCRETE CURBS, SIDEWALK AND DRIVEWAY APRONS REQUIRE PRE-INSPECTION.

BINDER COURSE SHALL NOT BE PLACED ADJACENT TO CURB AND GUTTER UNTIL THE CURB AND GUTTER HAS BEEN PROPERLY BACKFILLED TO THE SATISFACTION OF THE ENGINEER.

PRIOR TO PLACING BITUMINOUS CONCRETE MIX ADJACENT TO EXISTING PAVEMENT TO REMAIN, THE EXPOSED EDGE SHALL BE CLEANED OF LOOSE MATERIAL TO THE SATISFACTION OF THE ENGINEER. THIS WORK SHALL BE CONSIDERED INCLUDED IN THE COST OF THE BITUMINOUS CONCRETE BEING PLACED.

BITUMINOUS CONCRETE SURFACE COURSE SHALL NOT BE PLACED UNTIL ALL EARTH EXCAVATION, TOP SOIL PLACEMENT, AND BITUMINOUS CONCRETE BINDER COURSE HAVE BEEN COMPLETED TO THE SATISFACTION OF THE ENGINEER.

SIGNING, STRIPING & LANDSCAPING

THE CONTRACTOR WILL BE REQUIRED TO RELOCATE OR REMOVE AND REPLACE SIGNS WHICH INTERFERE WITH HIS CONSTRUCTION OPERATIONS, AND TO TEMPORARILY RESET ALL SUCH SIGNS DURING CONSTRUCTION OPERATIONS. THIS WORK WILL BE INCLUDED IN THE ITEM "TRAFFIC CONTROL AND PROTECTION".

PAVEMENT MARKING DIMENSIONS ARE TO THE CENTER OF A SINGLE LINE OR THE CENTER OF THE GAP OF A DOUBLE LINE.

ANY SIGNS WHICH ARE DAMAGED DURING CONSTRUCTION OPERATIONS SHALL BE REPLACED AND INSTALLED BY THE CONTRACTOR TO THE SATISFACTION OF THE ENGINEER AT NO ADDITIONAL COST TO THE CONTRACT.

WHEN DIRECTED BY THE ENGINEER, SUPPLEMENTAL WATERING SHALL BE APPLIED TO ALL SODDED AREAS PRIOR TO FINAL ACCEPTANCE AT A RATE SPECIFIED BY THE ENGINEER AND IN ACCORDANCE WITH THE STANDARD SPECIFICATIONS AND SPECIAL PROVISIONS.

IN ADDITION TO MEETING THE REQUIREMENTS OF ARTICLE 1081.05 OF THE STANDARD SPECIFICATIONS, ALL FURNISHED TOPSOIL SHALL BE PROCESSED THROUGH A POWER SCREEN AND PLACED AT THE JOBSITE IN A PULVERIZED CONDITION. PULVERIZED TOPSOIL WILL NOT BE PAID FOR SEPARATELY BUT SHALL BE INCLUDED IN THE COST OF "TOPSOIL FURNISH AND PLACE" OF THE DEPTH SPECIFIED.

ALL PARKWAYS DISTURBED DURING CONSTRUCTION WILL BE RESTORED WITH 4" OF TOPSOIL AND SOD.

ALL EXISTING SIGNS LOCATED IN SUCH A MANNER THAT THEY DO NOT CONFLICT WITH THE IMPROVEMENTS SHALL REMAIN IN PLACE UNLESS OTHERWISE DIRECTED BY THE ENGINEER.

TREE PROTECTION

ALL TREES ARE DESIGNATED TO REMAIN UNLESS OTHERWISE NOTED ON THE PLANS, AND SHALL BE PROTECTED WITH TEMPORARY FENCE AND IN ACCORDANCE WITH THE PROVISION OF SECTION 201 OF THE STANDARD SPECIFICATIONS.

ALL PARKWAY TREES AND NEARBY TREES ON ADJOINING PROPERTY SHALL HAVE TEMPORARY FENCES INSTALLED TO PROTECT THEM. A MINIMUM OF FOUR (4) STAKES SHALL BE USED AND THE FENCE SHALL BE A MINIMUM OF SIX (6) FEET FROM THE TRUNK OF THE TREE. THE PROVISION, INSTALLATION, MAINTENANCE AND REMOVAL OF TEMPORARY FENCE SHALL BE CONSIDERED AS INCLUDED IN THE COST OF TREE PROTECTION.

NO WORK SHALL TAKE PLACE WITHIN THE TEMPORARY FENCE ERECTED AROUND A TREE, NOR SHALL ANY MATERIALS OR EQUIPMENT BE STOCKPILED THERE. IF TEMPORARY FENCE MUST BE REMOVED TO FACILITATE CONSTRUCTION OPERATIONS, IT SHALL BE IMMEDIATELY RELOCATED TO A POINT AS FAR FROM THE TRUNK OF THE TREE AS POSSIBLE WHICH WILL STILL ALLOW CONSTRUCTION OPERATIONS TO TAKE PLACE. SHOULD THE TEMPORARY FENCE SURROUNDING ANY TREE BE RELOCATED TO A POINT CLOSER TO THE TRUNK THAN SIX (6) FEET, CONTRACTOR SHALL, BEFORE RELOCATING TEMPORARY FENCE, INSTALL TREE TRUNK PROTECTION ON SAID TREE. THE PROVISION, INSTALLATION, MAINTENANCE AND REMOVAL OF TREE TRUNK PROTECTION SHALL BE CONSIDERED AS INCLUDED IN THE COST OF TREE PROTECTION.

ALL STUMPS MUST BE REMOVED TO A MINIMUM OF 18" BELOW PROPOSED GROUND ELEVATION.

TRAFFIC CONTROL

ALL TRAFFIC CONTROL AND OTHER ADVISORY SIGNS NEEDED FOR CONSTRUCTION ARE TO BE FURNISHED BY THE CONTRACTOR IN ACCORDANCE WITH THE STANDARD SPECIFICATIONS.

ALL TRAFFIC CONTROL AND PROTECTION DEVICES SHALL BE CLEANED AS NECESSARY THROUGHOUT THE DURATION OF THE CONTRACT.

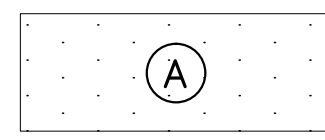
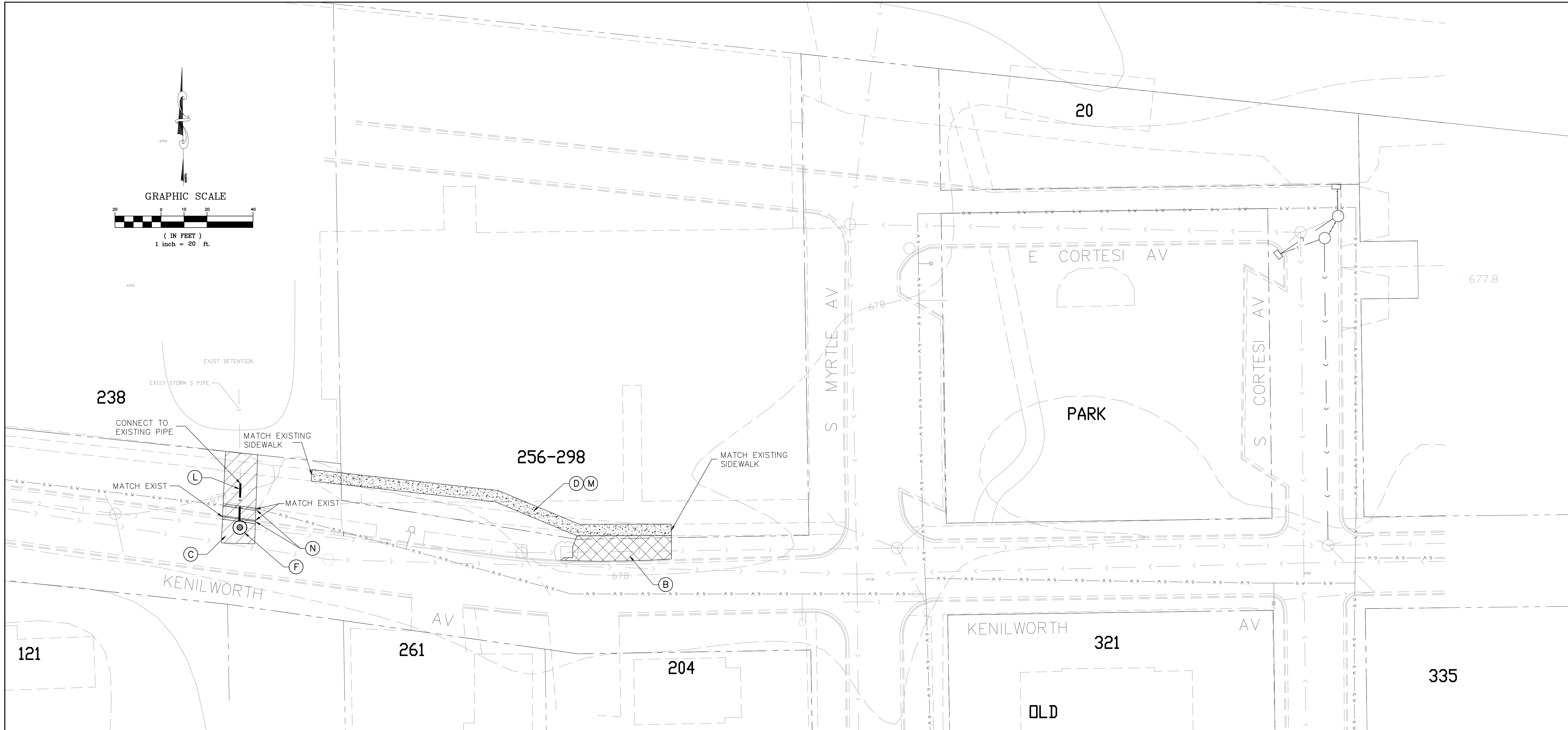
BARRICADES: THE CONTRACTOR SHALL PROVIDE AND INSTALL TWO (2) WEIGHTED SANDBAGS ON EACH TYPE I OR TYPE II BARRICADE USED (ONE WEIGHTED SANDBAG ACROSS EACH BOTTOM RAIL), AND SHALL PROVIDE AND INSTALL FOUR (4) WEIGHTED SANDBAGS ON EACH TYPE III BARRICADE USED.

REFLECTIVE SHEETING: THE REFLECTIVE SHEETING USED ON TRAFFIC CONTROL DEVICES FOR THIS PROJECT SHALL BE NEW WHEN INITIALLY INSTALLED ON THIS PROJECT. THIS REQUIREMENT SHALL APPLY TO THE REFLECTIVE SHEETING USED ON ALL SIGNS, DRUMS, BARRICADES, VERTICAL PANELS, FLEXIBLE DELINEATORS, AND STOP/SLOW PADDLES. THIS REQUIREMENT SHALL BE CONSIDERED INCIDENTAL TO THE CONTRACT AND WILL NOT BE MEASURED SEPARATELY FOR PAYMENT.

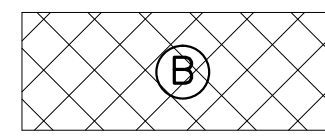
TRAFFIC CONTROL SHALL BE IN ACCORDANCE WITH THE FOLLOWING IDOT STANDARDS AS APPLICABLE:

701301	LANE CLOSURE, 2L, 2W, SHORT-TIME OPERATIONS
701501	URBAN LANE CLOSURE, 2L, 2W, UNDIVIDED
701801	LANE CLOSURE MULTILANE, 1W OR 2W CROSSWALK OR SIDEWALK CLOSURE
702001	TRAFFIC CONTROL DEVICES
BLR 17-3	TRAFFIC CONTROL DEVICES – DAY LABOR CONSTRUCTION
BLR 21-6	TYPICAL APPLICATION OF TRAFFIC CONTROL DEVICES FOR CONSTRUCTION ON RURAL LOCAL HIGHWAYS

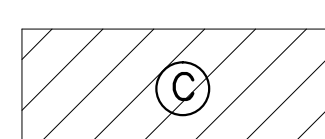
 VILLAGE OF VILLA PARK ENGINEERING DIVISION <small>30 SOUTH WINDSOR AVENUE VILLA PARK, ILLINOIS 60181-0288</small>	USER NAME =	DESIGNED - S. KAGSWAST	REVISED - 01/20/2014	VILLAGE OF VILLA PARK, ILLINOIS KENILWORTH PARK PROJECT	GENERAL NOTES	F.A. RTE.	SECTION	COUNTY	TOTAL SHEETS	SHEET NO
	FILE NAME =	DRAWN - S. KAGSWAST	REVISED - 04/10/2014			NONE	NONE	DUPAGE	6	02
	PLOT SCALE = SEE PLAN	CHECKED - R. SALERNO	REVISED - 04/15/2014			CONTRACT NO. PW14-0053				
	PLOT DATE = 01/20/2014	DATE - 09-15-2013	REVISED -			VILLAGE OF VILLA PARK ILLINOIS				



(A) SAW CUT & MILL EXIST PAVEMENT (2.5" MIN), INSTALL PRIME COAT AND 1.5" HMA BITUMINOUS SURFACE COURSE AND 1" HMA LEVEL BIDER (MACHINE METHOD).



(B) REMOVE EXISTING HMA & PCC SIDEWALK AND REPLACE WITH 4" PULVERIZED TOPSOIL & SOD.



(C) SAW CUT & REMOVE EXISTING PAVEMENT AND INSTALL TRENCH BACKFILL (AS REQUIRED) AND CLASS D PATCH, 8 INCH.

(D) REMOVE EXISTING HMA PAVEMENT WITHIN NEW SIDEWALK AREA AND REPLACE WITH 5" PCC SIDEWALK, 5".

(E) HOT-MIX ASPHALT REMOVAL - BUTT JOINT

(F) INSTALL 4" PRECAST MH WITH FRAME & GRATE. INSTALL OVER & CONNECT TO EXISTING PIPE RIM TO MATCH EXISTING PAVEMENT & INVERT TO MATCH EXISTING PIPE ELEVATIONS.

(J) EXISTING UTILITY STRUCTURE, ADJUST RIM TO MATCH FINISH PAVEMENT ELEVATIONS.

(L) INSTALL 15" RCP CL II, TY2 PIPE BETWEEN EXISTING STORM SEWER PIPE AND NEW 4' DIA STORM SEWER MH. SLOPE TO DRAIN TO NEW MANHOLE.

(M) INSTALL 5" PCC SIDEWALK, 5' WIDE CONNECTING & MATCH BETWEEN EXISTING SIDEWALK.

(N) SAW CUT & REMOVE EXISTING CURB & GUTTER AND REPLACE WITH B6.12 PCC CURB & GUTTER. CONNECT & MATCH BETWEEN EXISTING CURB & GUTTER.

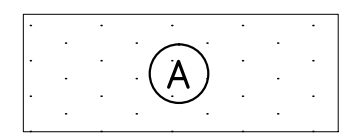
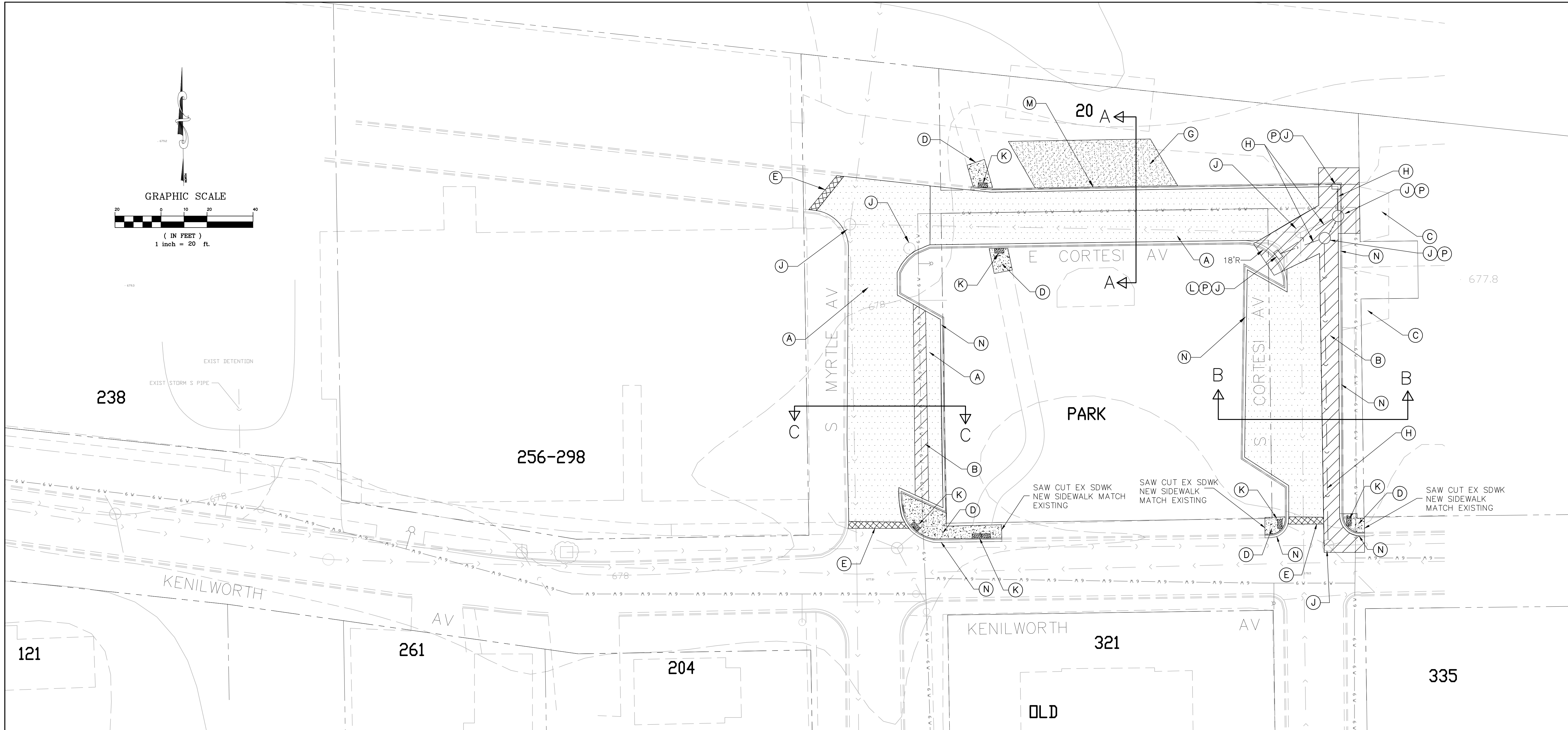


USER NAME =	DESIGNED - S. KAGSWAST	REVISED - 01/20/2014
FILE NAME =	DRAWN - S. KAGSWAST	REVISED - 04/10/2014
PLOT SCALE = SEE PLAN	CHECKED - R. SALERNO	REVISED - 04/15/2014
PLOT DATE = 01/20/2014	DATE - 09-15-2013	REVISED -

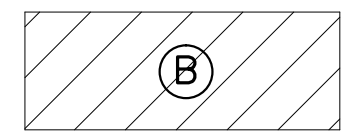
**VILLAGE OF VILLA PARK, ILLINOIS
KENILWORTH PARK PROJECT**

PROPOSED PLAN -PHASE 1

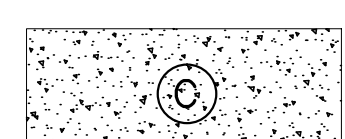
F.A. RTE.	SECTION	COUNTY	TOTAL SHEETS	SHEET NO.
NONE	NONE	DUPAGE	6	03
VILLAGE OF VILLA PARK		ILLINOIS		
CONTRACT NO. PW14-0053				



(A) SAW CUT & MILL EXIST PAVEMENT (2.5" MIN), INSTALL PRIME COAT AND 1.5" HMA BITUMINOUS SURFACE COURSE AND 1" HMA LEVEL BIDER (MACHINE METHOD).



(B) SAW CUT & REMOVE EXISTING PAVEMENT AND INSTALL TRENCH BACKFILL (AS REQUIRED) AND CLASS D PATCH, 8 INCH.



(C) CONCRETE DRIVEWAY PAVEMENT TO REMAIN

(D) SAW CUT & REMOVE & REPLACE EXISTING SIDEWALK AND SIDEWALK RAMP WITH NEW PCC SIDEWALK, 5 INCHES AND DETECTABLE WARNING TILES.

(E) HOT-MIX ASPHALT REMOVAL - BUTT JOINT

(G) REMOVE EXISTING GRAVEL. INSTALL 6" CA-6 AGGREGATE BASE COURSE WITH 4" HMA BINDER & 2" HMA SURFACE COURSE. (PROPOSED ALTERNATE)

(H) STORM SEWER PIPE (IN-HOUSE INSTALLATION)

(J) EXISTING UTILITY STRUCTURE, ADJUST RIM TO MATCH FINISH PAVEMENT ELEVATIONS.

(K) DETECTABLE WARNING TILES

(L) DRAINAGE STRUCTURE (REMOVED BY OTHERS)

(M) PROVIDE B6.12 DEPRESSED CURB ALONG PARKING AREA. (PROPOSED ALTERNATE)

(N) SAW CUT & REMOVE EXISTING CURB & GUTTER AND REPLACE WITH B6.12 PCC CURB & GUTTER. CONNECT & MATCH BETWEEN EXISTING CURB & GUTTER.

(P) DRAINAGE STRUCTURE (IN-HOUSE INSTALLATION)

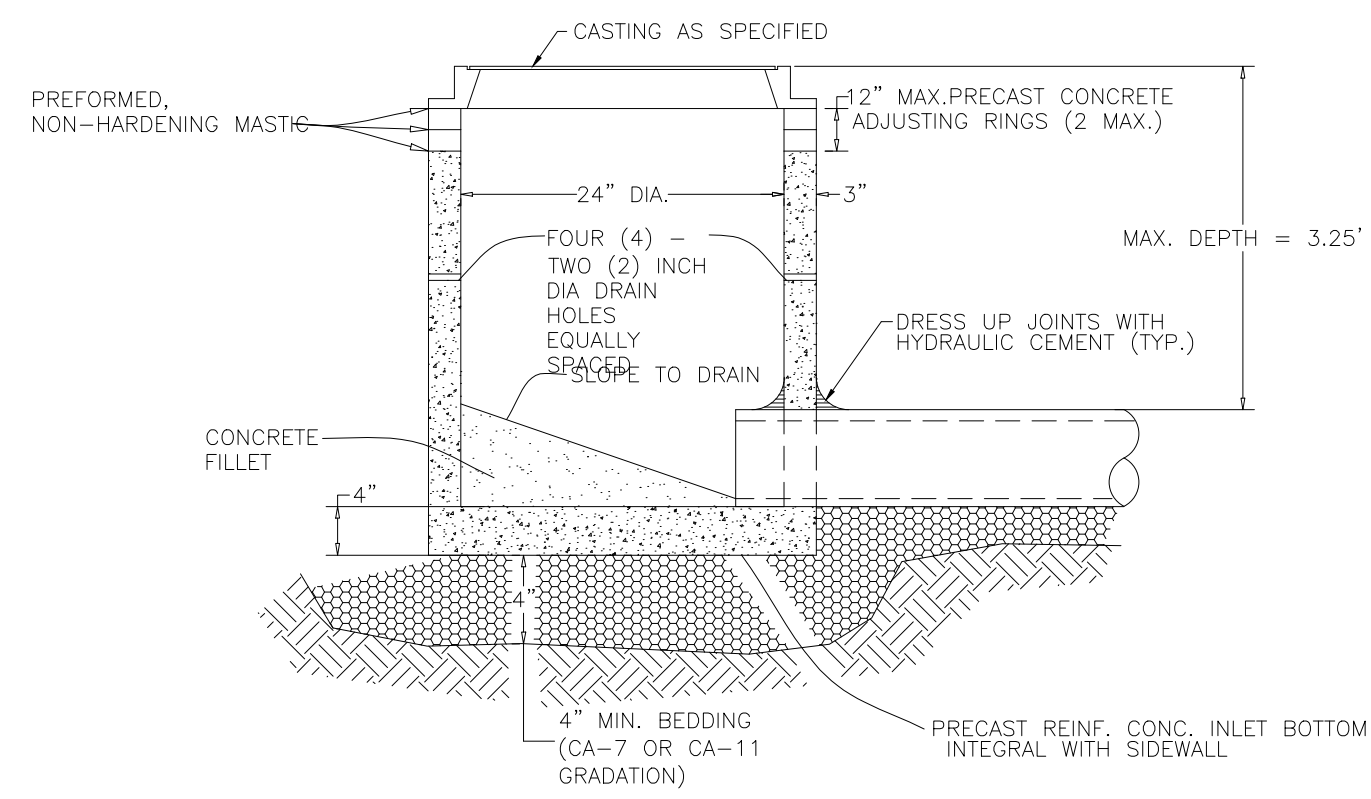


USER NAME =	DESIGNED - S. KAGSWAST	REVISED - 01/20/2014
FILE NAME =	DRAWN - S. KAGSWAST	REVISED - 04/10/2014
PLOT SCALE = SEE PLAN	CHECKED - R. SALERNO	REVISED - 04/15/2014
PLOT DATE = 01/20/2014	DATE - 09-15-2013	REVISED -

**VILLAGE OF VILLA PARK, ILLINOIS
KENILWORTH PARK PROJECT**

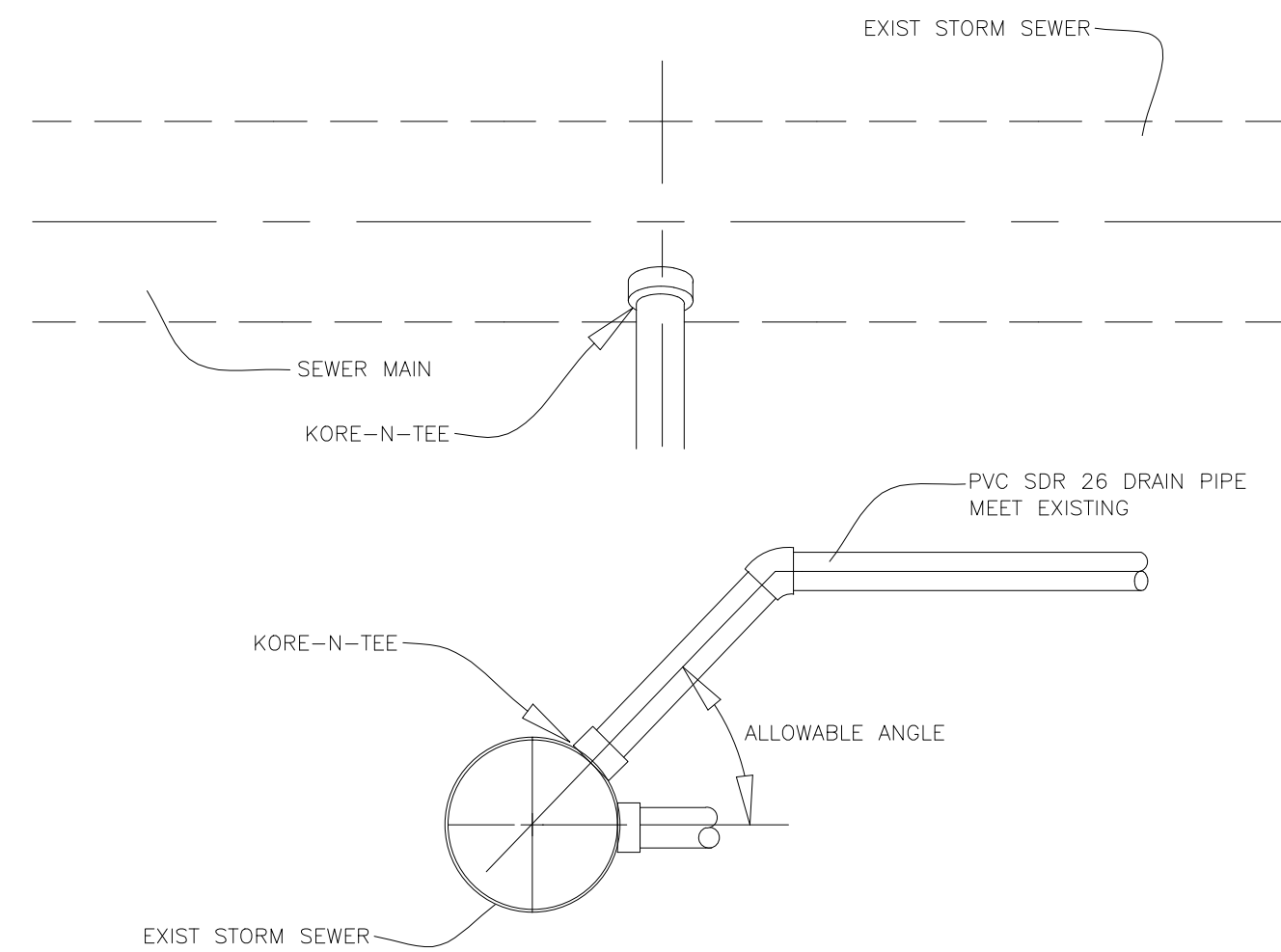
PROPOSED PLAN - PHASE 2

F.A. RTE.	SECTION	COUNTY	TOTAL SHEETS	SHEET NO.
NONE	NONE	DUPAGE	6	04
VILLAGE OF VILLA PARK		ILLINOIS	CONTRACT NO. PW14-0053	



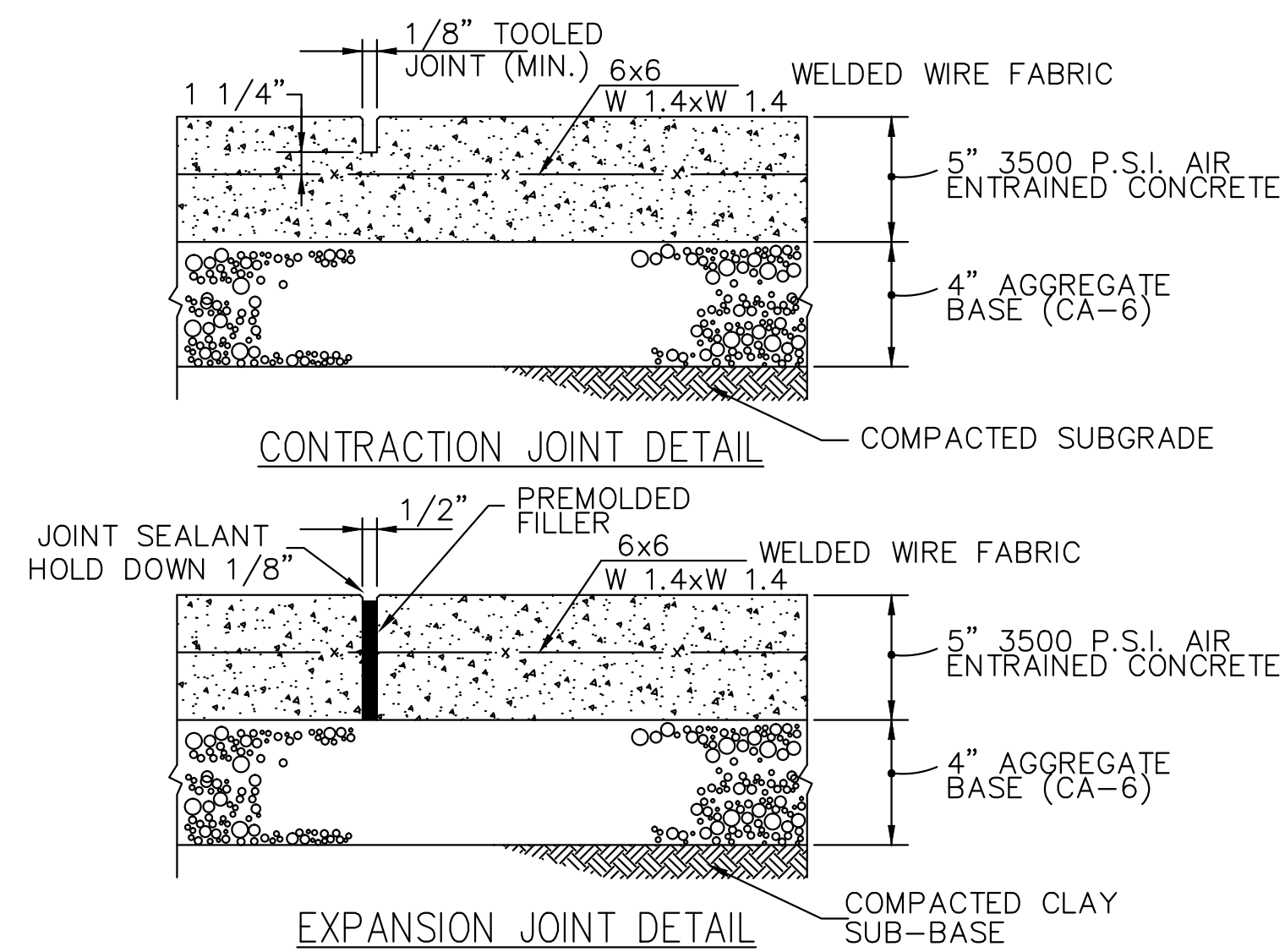
- GENERAL NOTES:**
1. PROVIDE PRECAST REINFORCED CONCRETE BARREL AND RISER SECTION. CONCRETE BLOCK CONSTRUCTION IS NOT PERMITTED.
 2. PROVIDE GRANULAR BACKFILL AROUND INLET TO SUBGRADE ELEVATION IN PAVED AREAS. MATERIAL SHALL MEET THE REQUIREMENTS OF IDOT STANDARD SPECIFICATIONS FOR ROAD AND BRIDGE CONSTRUCTION FOR COARSE AGGREGATE (CA-6 GRADATION.)
 3. WHEN THE FRAME DOES NOT MEET PROPOSED ELEVATION, A MAXIMUM OF TWO PRECAST CONCRETE RINGS MAY BE USED TO A MAXIMUM HEIGHT OF 12 INCHES. THE RING(S) AND FRAME SHALL BE SET IN A BED OF PREFORMED NON-HARDENING MASTIC (RUB-R-NEK, EZ STICK OR APPROVED).
 4. PRECAST ADJUSTING RINGS SHALL BE REINFORCED WITH NO. 3 GAUGE WIRE OR EQUIVALENT AND SHALL HAVE A MINIMUM THICKNESS OF TWO INCHES.
 5. MORTAR SHALL NOT BE USED TO DRESS UP ADJUSTING RINGS AND/OR FRAME.
 6. IN PAVED AREAS, DRAIN HOLES/WEEP HOLES SHALL BE COVERED WITH FILTER FABRIC. FILTER FABRIC SHALL BE SECURED TO THE OUTSIDE OF STRUCTURE PRIOR TO BACKFILL.
 7. IN GRASSED AREAS, DRAIN HOLES/WEEP HOLES SHALL BE PLUGGED WITH HYDRAULIC CEMENT.

REV:	DATE:	INLET TYPE "A"	VILLAGE OF VILLA PARK
REV:	DATE:		STORM - 15
DRAWN BY:	DATE:		



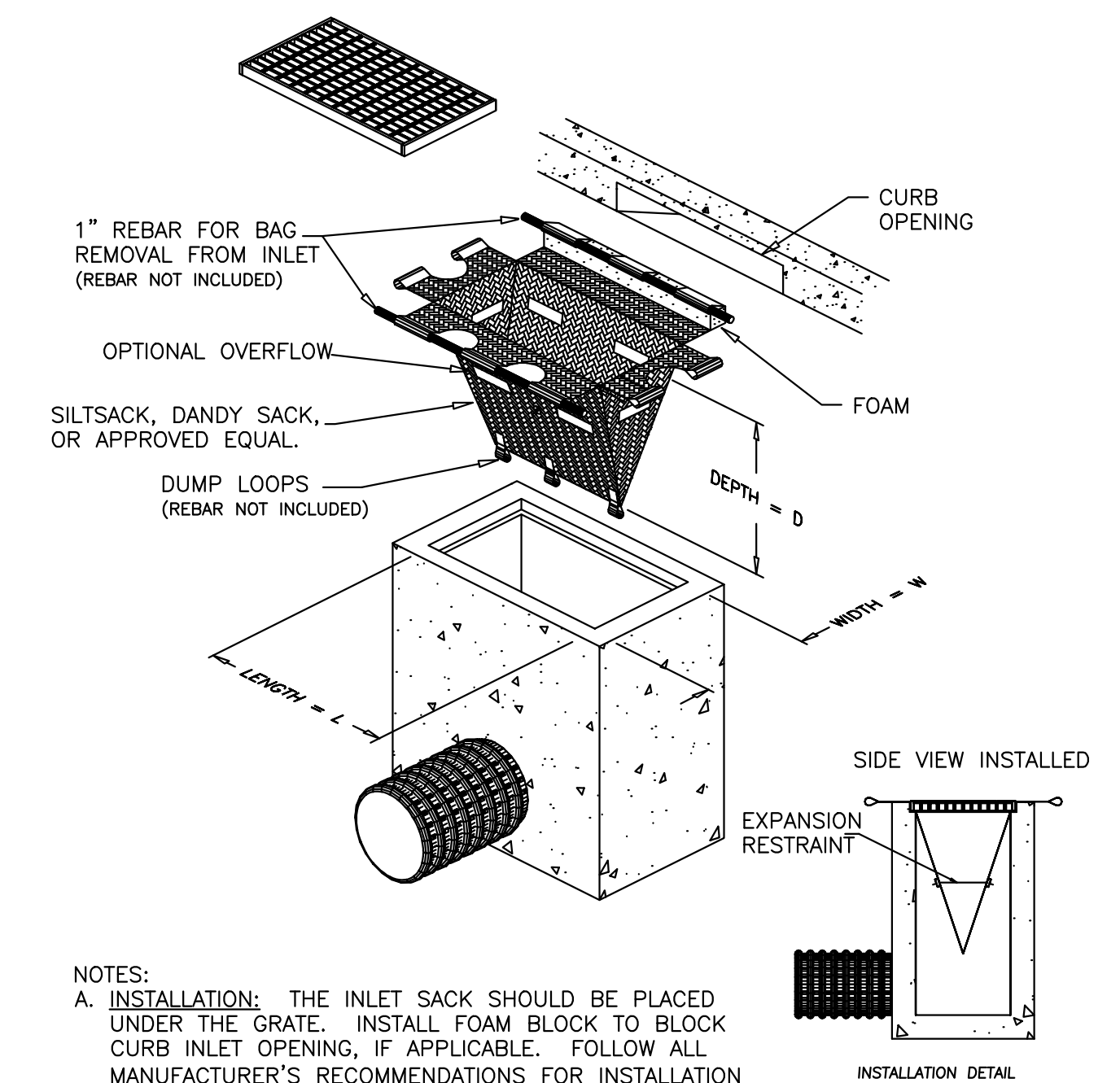
- GENERAL NOTES:**
1. EXISTING PIPE SHALL BE CORED ONLY TO GAIN ACCESS
 2. KOR-N-TEE SEWER CONNECTORS, PART NO. 006-5 THRU 9 BY ROSEMONT BUILDING SUPPLY, BENSENVILLE. 630-766-8030

REV:	DATE:	KOR-N-TEE CONNECTION	VILLAGE OF VILLA PARK
REV:	DATE:		STORM-21
DRAWN BY:	DATE:		



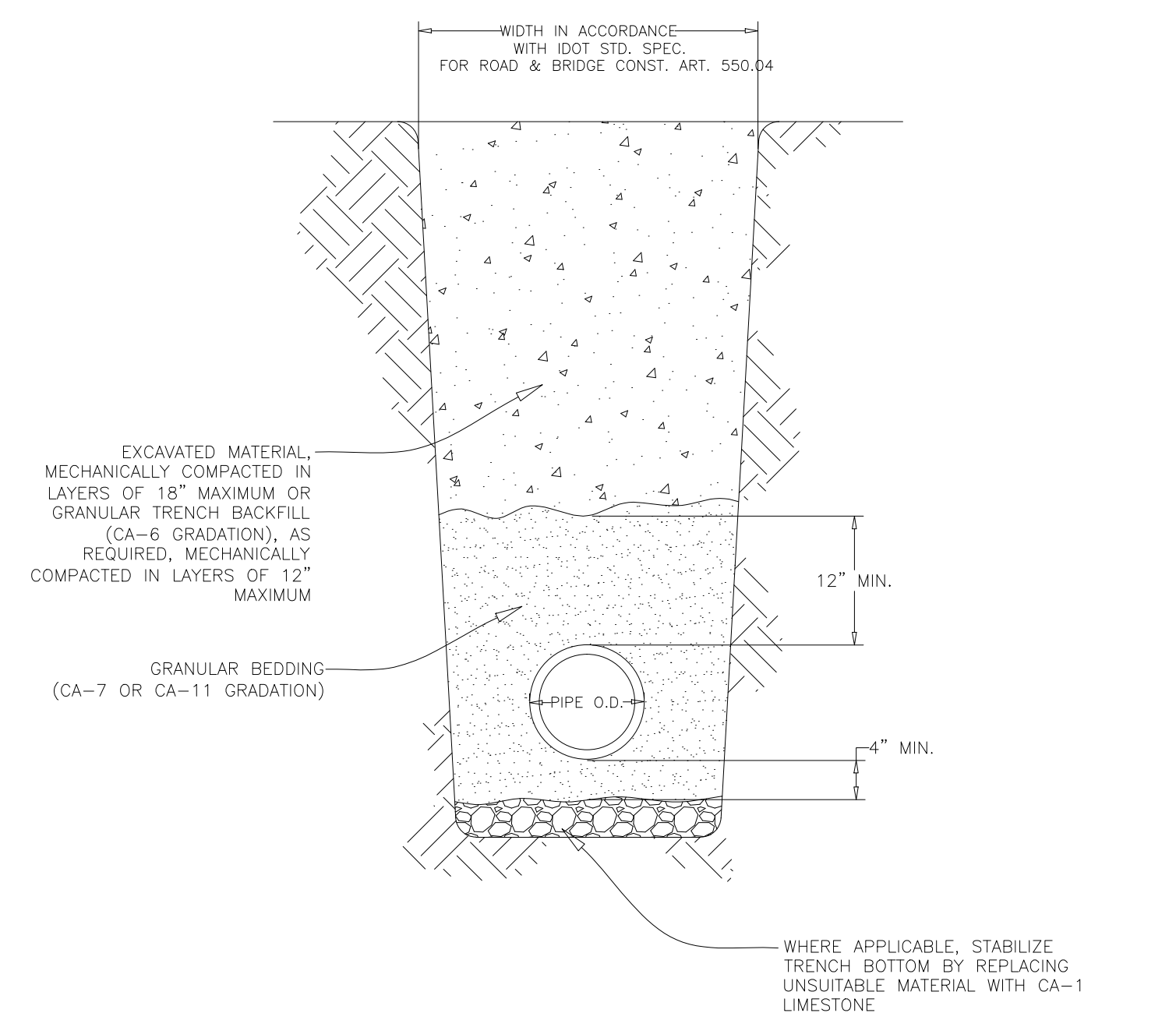
- NOTES:**
1. UNLESS OTHERWISE NOTED ON PLANS, CONTRACTION JOINTS TO BE 5'-0" O. C. & EXPANSION JOINTS TO BE 40'-0" O. C. MAX., OR AT BACK OF CURB, CHANGE OF DIRECTION, OTHER WALK, UTILITY APPURTENANCE, OR FACE OF STRUCTURE.

P.C. SIDEWALK DETAILS
SCALE: NONE



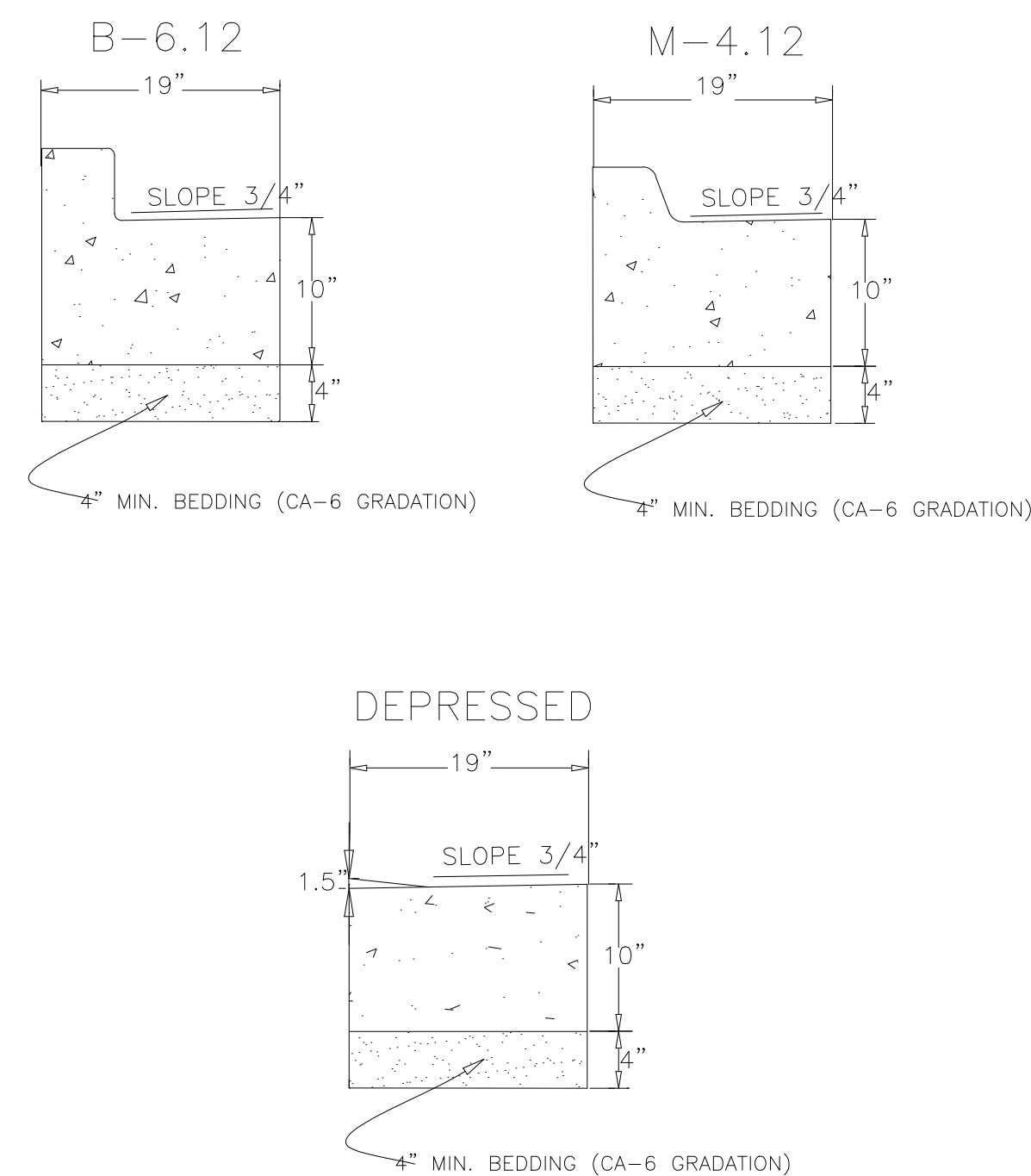
- NOTES:**
1. **INSTALLATION:** THE INLET SACK SHOULD BE PLACED UNDER THE GRATE. INSTALL FOAM BLOCK TO BLOCK CURB INLET OPENING, IF APPLICABLE. FOLLOW ALL MANUFACTURER'S RECOMMENDATIONS FOR INSTALLATION AND RECOMMENDATION.
 2. **MAINTENANCE:** REMOVE ALL ACCUMULATED SEDIMENT AND DEBRIS FROM THE SURFACE AND VICINITY OF UNIT AFTER EACH STORM EVENT. REMOVE SEDIMENT THAT HAS ACCUMULATED WITHIN THE CONTAINMENT AREA AS NEEDED. IF USING OPTIONAL OIL ABSORBENTS, REMOVE AND REPLACE ABSORBENT MATERIAL WHEN NEARING SATURATION.
 3. **DETAIL IS SHOWN AS A SCHEMATIC. CONTRACTOR SHALL PROVIDE SACK MODEL SPECIFIC TO THE STRUCTURE'S FRAME AND GRATE.**

INLET PROTECTION DETAIL
SCALE: N T S



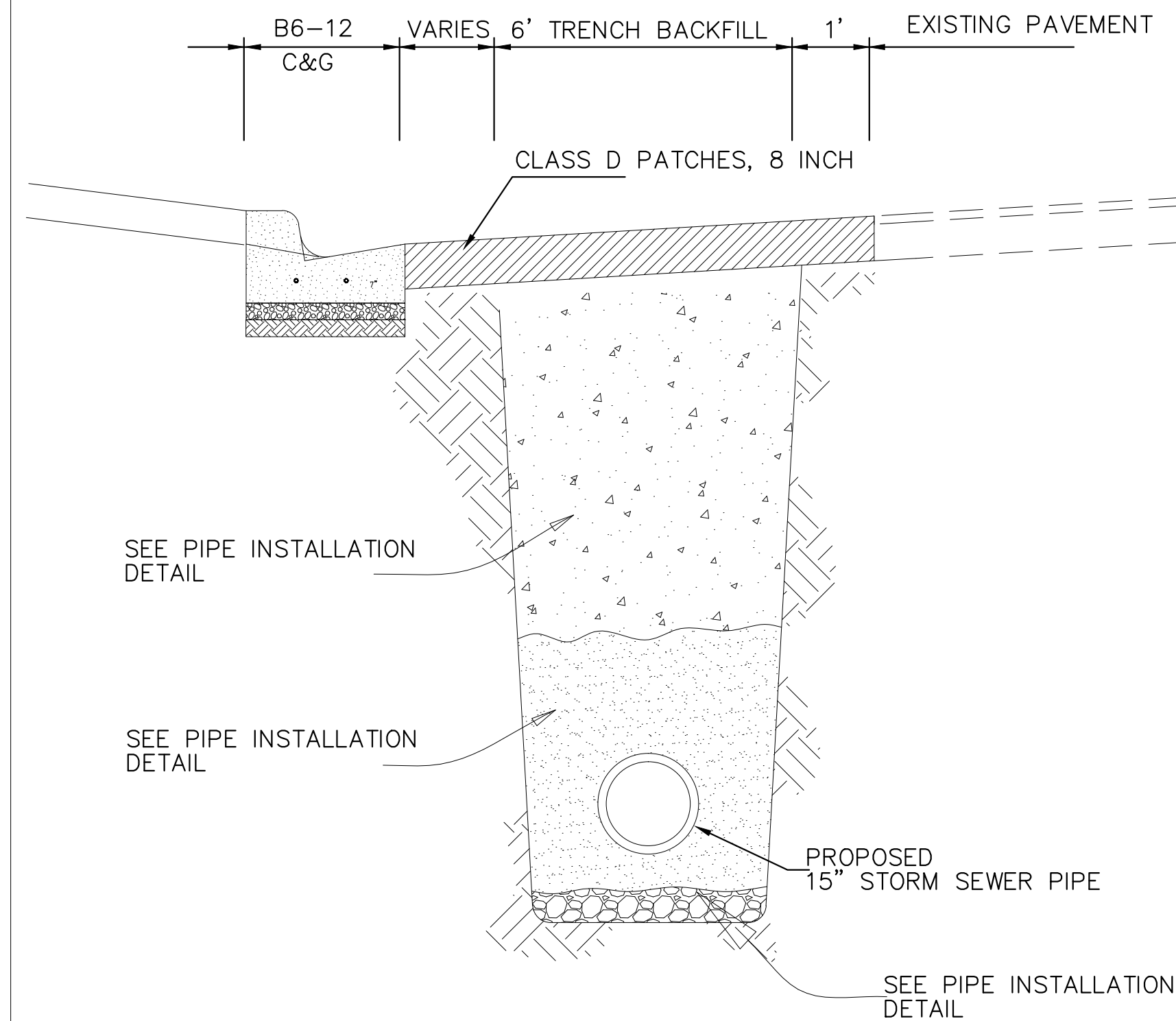
- GENERAL NOTES:**
1. GRANULAR TRENCH BACKFILL SHALL BE MECHANICALLY COMPACTED IN LAYERS OF 12" MAXIMUM, LOOSE MEASURE, TO 95% OF STANDARD MAXIMUM DENSITY (ASTM D 698).
 2. EXCAVATED MATERIAL USED FOR BACKFILL SHALL BE MECHANICALLY COMPACTED IN LAYERS OF 12" MAXIMUM, LOOSE MEASURE, TO 90% OF STANDARD MAXIMUM DENSITY (ASTM D 698).

REV:	DATE:	PIPE INSTALLATION	VILLAGE OF VILLA PARK
REV:	DATE:		SANITARY - 03
DRAWN BY:	DATE:		

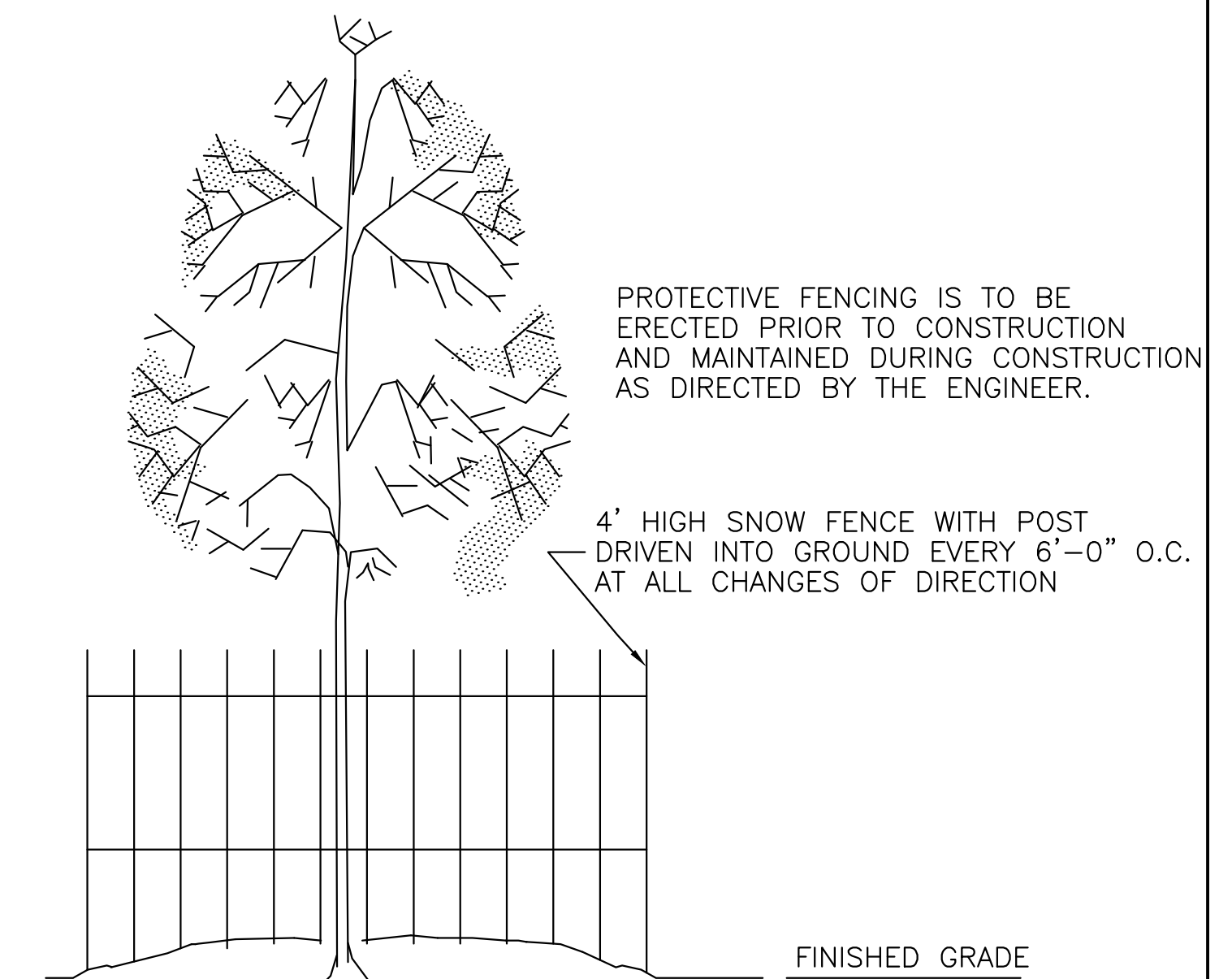


- GENERAL NOTES:**
1. CONTRACTION JOINTS SHALL BE PLACED BETWEEN EXPANSION JOINTS AT 15'
 2. EXPANSION JOINTS ARE TO BE PLACED AT 60' INTERVALS. 2-#6 x 18" REBARSTO BE PLACED AT ALL EXPANSION JOINTS.

REV:	DATE:	COMBINATION CONCRETE CURB AND GUTTER	VILLAGE OF VILLA PARK
REV:	DATE:		ROAD - 02
DRAWN BY:	DATE:		

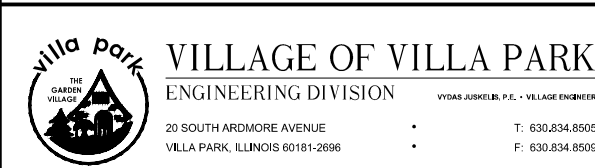


TYPICAL STORM SEWER PIPE INSTALLATION
SCALE: NONE



- PROTECTIVE FENCING IS TO BE ERECTED PRIOR TO CONSTRUCTION AND MAINTAINED DURING CONSTRUCTION AS DIRECTED BY THE ENGINEER.
- 4' HIGH SNOW FENCE WITH POST DRIVEN INTO GROUND EVERY 6'-0" O.C. AT ALL CHANGES OF DIRECTION
- NO CONSTRUCTION ACTIVITY IS PERMITTED WITHIN THE PROTECTIVE FENCING AT THE COMPLETION OF CONSTRUCTION ALL TREES WILL BE PRUNED AS NECESSARY TO CORRECT ANY DAMAGE RESULTING FROM CONSTRUCTION ACTIVITY

TEMPORARY TREE PROTECTION DETAIL
NOT TO SCALE



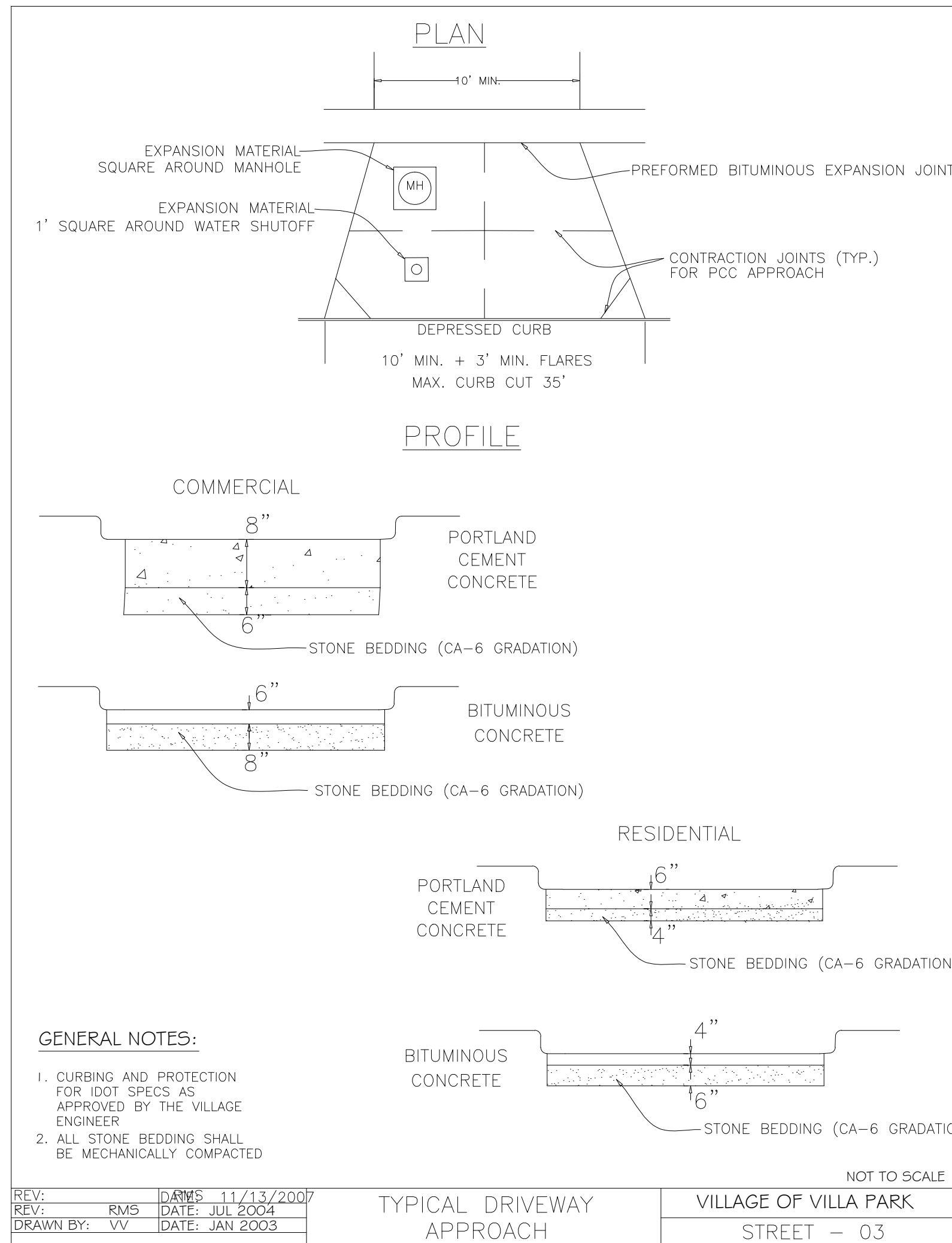
USER NAME =	DESIGNED -	S. KAGSWAST	REVISED -	01/20/2014
FILE NAME =	DRAWN -	S. KAGSWAST	REVISED -	04/10/2014
PLOT SCALE =	CHECKED -	R. SALERNO	REVISED -	04/15/2014
PLOT DATE =	DATE -	09-15-2013	REVISED -	

VILLAGE OF VILLA PARK, ILLINOIS
KENILWORTH PARK PROJECT

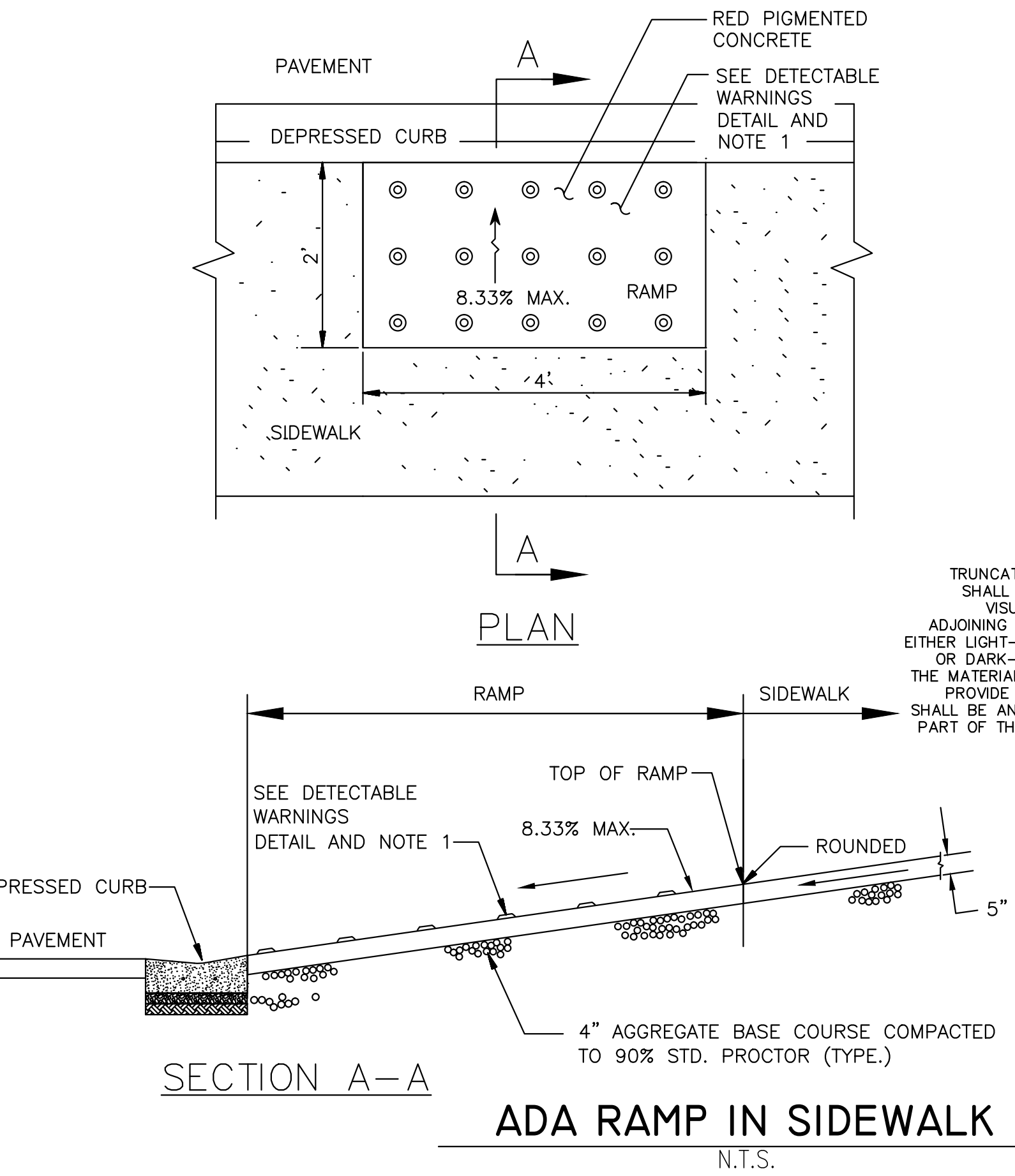
CONSTRUCTION DETAILS

F.A. RTE.	SECTION	COUNTY	TOTAL SHEETS	SHEET NO
NONE	NONE	DUPAGE	6	05
VILLAGE OF VILLA PARK			ILLINOIS	
CONTRACT NO. PW14-0053				

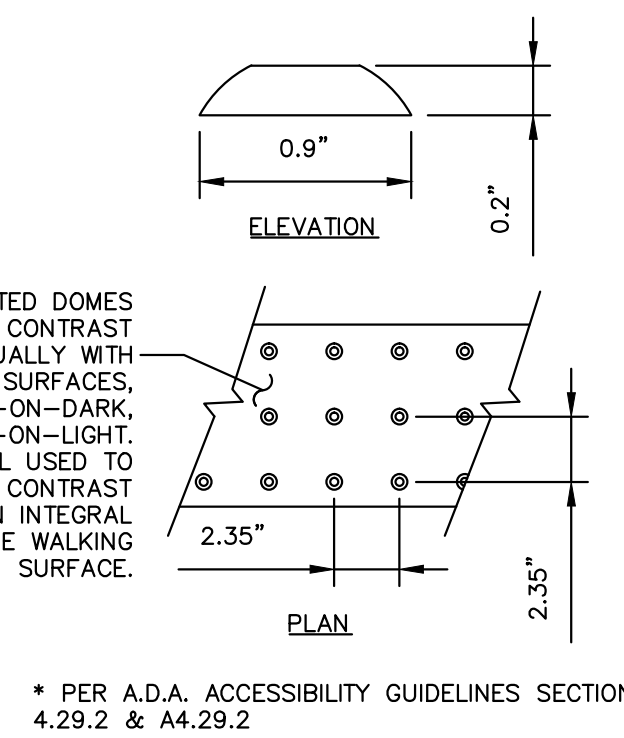
SHEET 05 - CONSTRUCTION DETAILS



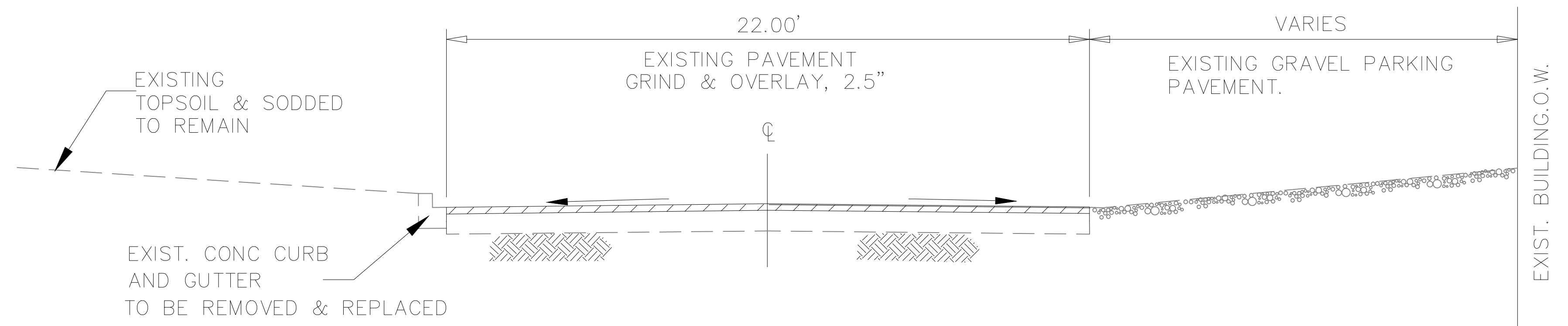
REV: DMS	DATE: 11/13/2007	TYPICAL DRIVEWAY APPROACH	VILLAGE OF VILLA PARK STREET - 03
REV: RMS	DATE: JUL 2004		
DRAWN BY: VV	DATE: JAN 2003	NOT TO SCALE	



- NOTES:**
1. THE SURFACE OF RAMP SHALL HAVE DETECTABLE WARNINGS. DETECTABLE WARNINGS SHALL CONSIST OF RAISED TRUNCATED DOMES. SURFACE SHALL DIFFER FROM ADJOINING WALKING SURFACES IN RESILIENCY OR SOUND-ON-GANE CONTACT. SEE DETECTABLE WARNINGS DETAIL.
 2. CONSTRUCT PER A.D.A. STANDARDS.

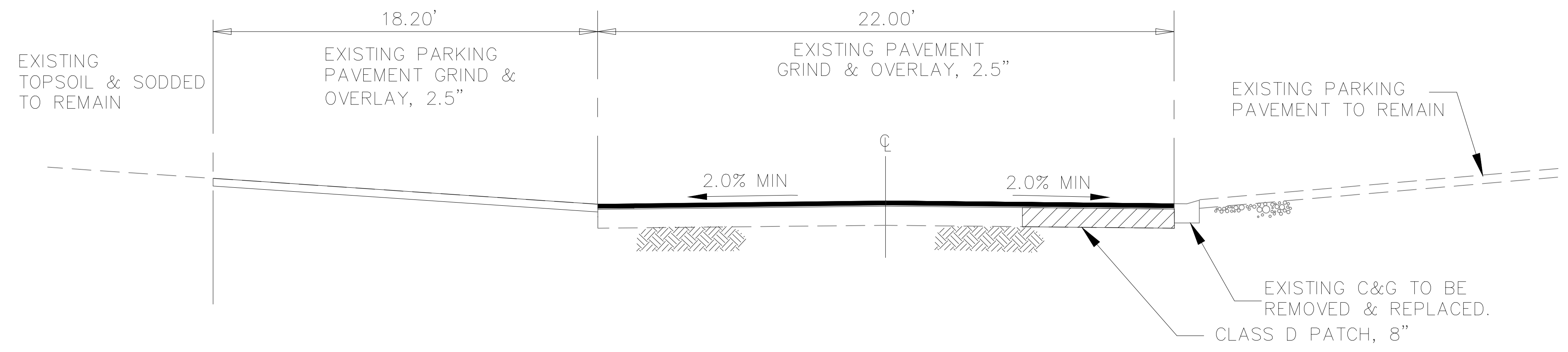


* PER A.D.A. ACCESSIBILITY GUIDELINES SECTION 4.29.2 & A4.29.2



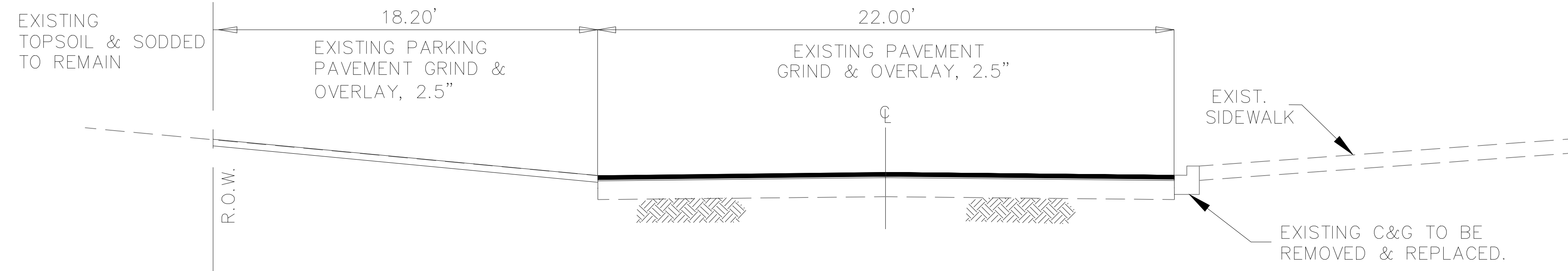
**EAST CORTESI AVENUE
LOOKING WEST**

NOT TO SCALE



**SECTION B - B
SOUTH CORTESI AVENUE
LOOKING NORTH**

NOT TO SCALE



**SECTION C - C
SOUTH MYRTLE AVENUE
LOOKING SOUTH**

NOT TO SCALE



USER NAME =	DESIGNED - S. KAGSWAST	REVISED - 01/20/2014
FILE NAME =	DRAWN - S. KAGSWAST	REVISED - 04/10/2014
PLOT SCALE = SEE PLAN	CHECKED - R. SALERNO	REVISED - 04/15/2014
PLOT DATE = 01/20/2014	DATE - 09-15-2013	REVISED -

**VILLAGE OF VILLA PARK, ILLINOIS
KENILWORTH PARK PROJECT**

CONSTRUCTION DETAILS

F.A. RTE.	SECTION	COUNTY	TOTAL SHEETS	SHEET NO
NONE	NONE	DUPAGE	6	06
VILLAGE OF VILLA PARK			ILLINOIS	

SHEET 06 - CONSTRUCTION DETAILS