

F.A. RTE.	SECTION	COUNTY	TOTAL SHEETS	SHEET NO.
		DUPAGE	15	1
		ILLINOIS	CONTRACT NO.	

VILLAGE OF VILLA PARK, ILLINOIS

DCEO DRAINAGE IMPROVEMENT PROJECT (VARIOUS LOCATIONS)

ELLSWORTH DITCH, RIDGE ROAD, THIRD AVENUE AND VERMONT STREET, AND 205 S. YALE AVENUE DUPAGE COUNTY



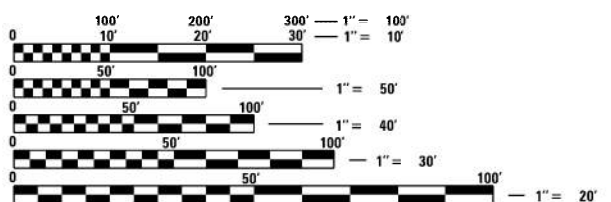
INDEX OF SHEETS:

- 1 COVER SHEET
- 2 GENERAL NOTES
- 3-5 SUMMARY OF QUANTITIES
- 6 ELLSWORTH DITCH REGRADING PLAN
- 7-8 RIDGE ROAD DRAINAGE IMPROVEMENTS
- 9 THIRD AVENUE AND VERMONT STREET DRAINAGE IMPROVEMENTS
- 10 205 S. YALE AVENUE DRAINAGE IMPROVEMENTS
- 11-15 CONSTRUCTION DETAILS

FOR LIST OF HIGHWAY STANDARDS, SEE SHEET NO. 2

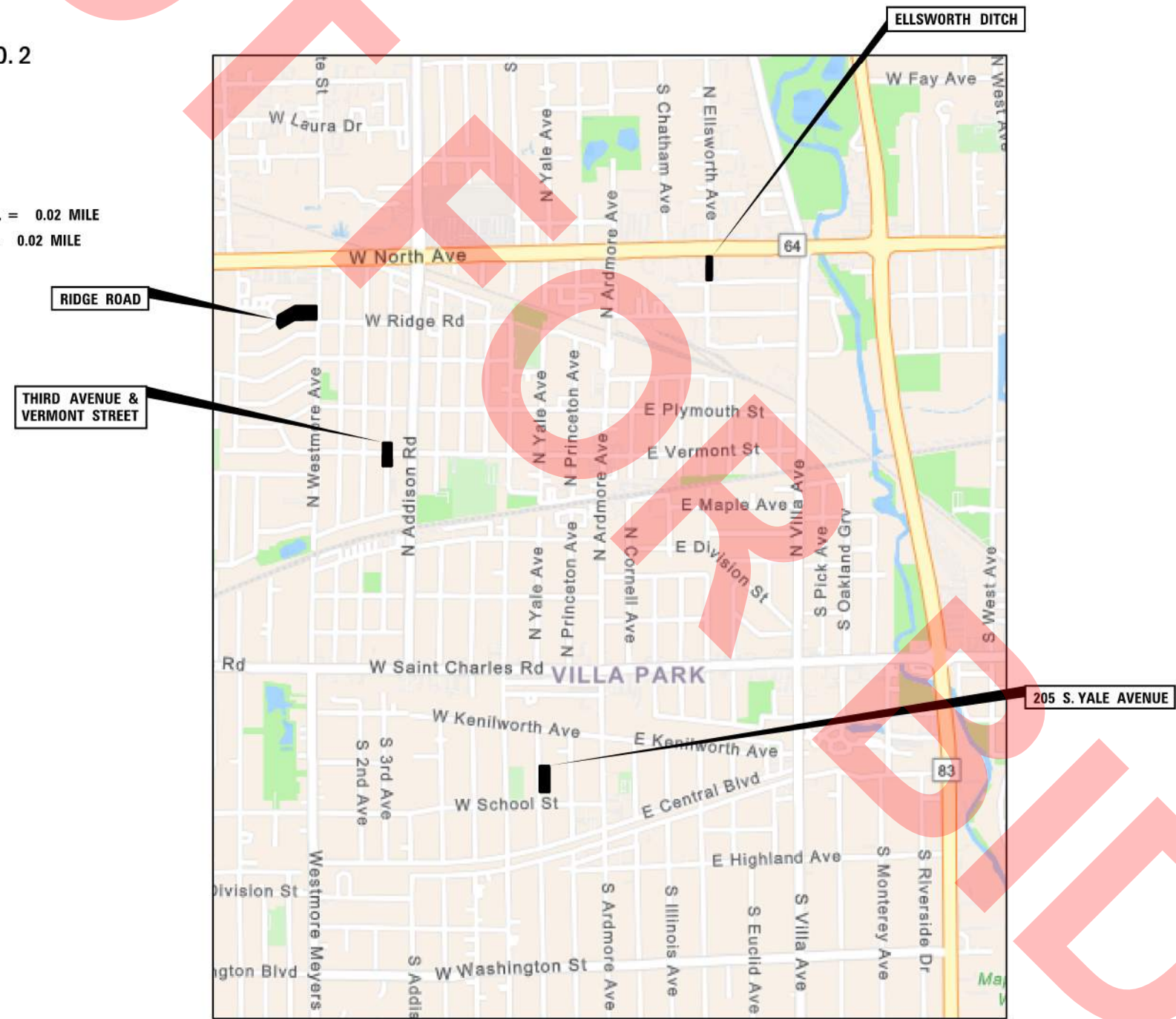
ELLSWORTH DITCH GROSS LENGTH = 379.82 FT. = 0.07 MILE
 ELLSWORTH DITCH NET LENGTH = 379.82 FT. = 0.07 MILE
 RIDGE ROAD GROSS LENGTH = 778.44 FT. = 0.15 MILE
 RIDGE ROAD NET LENGTH = 778.44 FT. = 0.15 MILE
 THIRD AVENUE AND VERMONT STREET GROSS LENGTH = 102.10 FT. = 0.02 MILE
 THIRD AVENUE AND VERMONT STREET NET LENGTH = 102.10 FT. = 0.02 MILE
 205 S. YALE AVENUE GROSS LENGTH = 212.76 FT. = 0.04 MILE
 205 S. YALE AVENUE NET LENGTH = 212.76 FT. = 0.04 MILE

PROJECT TOTAL GROSS LENGTH = 1473.12 FT. = 0.28 MILE
 PROJECT TOTAL NET LENGTH = 1473.12 FT. = 0.28 MILE



FULL SIZE PLANS HAVE BEEN PREPARED USING STANDARD ENGINEERING SCALES. REDUCED SIZED PLANS WILL NOT CONFORM TO STANDARD SCALES. IN MAKING MEASUREMENTS ON REDUCED PLANS, THE ABOVE SCALES MAY BE USED.

J.U.L.I.E.
 JOINT UTILITY LOCATION INFORMATION FOR EXCAVATION
 1-800-892-0123
 OR 811



V3
 JASON D. HOLY
 # 062-059941
 DATE: 9/25/2024

EXPIRATION DATE: 11-30-2025

GENERAL NOTES

- ALL EXISTING TOPOGRAPHY, UNDERGROUND UTILITIES, STRUCTURES AND ASSOCIATED FACILITIES SHOWN ON THESE DRAWINGS HAVE BEEN PLOTTED FROM AVAILABLE SURVEYS AND RECORDS. THEREFORE, THEIR LOCATIONS AND ELEVATIONS MUST BE CONSIDERED APPROXIMATE ONLY. THERE MAY BE OTHER FACILITIES, THE EXISTENCE OF WHICH ARE NOT PRESENTLY KNOWN. THE EXACT LOCATIONS AND ELEVATIONS ARE TO BE VERIFIED BY THE CONTRACTOR.
- BEFORE STARTING ANY EXCAVATION, THE CONTRACTOR SHALL CALL "JULIE" AND THE VILLAGE OF VILLA PARK FOR FIELD LOCATIONS OF BURIED UTILITIES 48 HOURS IN ADVANCE OF WORK.

ELECTRIC
COMMONWEALTH EDISON
2 LINCOLN CENTER
OAKBROOK TERRACE, IL 60181
(630) 576-7094

CABLE TV
COMCAST CABLE COMMUNICATIONS
MARTHA GIERAS
2001 YORK ROAD
OAK BROOK, IL 60523
(224) 229-5862

GAS
NICOR GAS
1844 FERRY RD.
NAPERVILLE, IL 60563
(630) 388-2362

TELEPHONE
AT&T
KARI MARTIN
1000 COMMERCE DRIVE, FLOOR 1
OAK BROOK, IL 60523
(630) 573-5789

WATER AND SEWER
VILLAGE OF VILLA PARK
KEVIN MANTELS
11 WEST HOME AVENUE
VILLA PARK, IL 60181
(630) 834-8505

- IT SHALL BE THE CONTRACTOR'S RESPONSIBILITY TO FIELD CHECK ALL DIMENSIONS AND ELEVATIONS OF EXISTING UTILITY LINES AND STRUCTURES THAT MAY BE IMPACTED BY THE PROPOSED WORK PRIOR TO ORDERING MATERIAL OR BEGINNING CONSTRUCTION. ANY DISCREPANCIES FROM THE PLANS SHALL BE REPORTED TO THE ENGINEER IMMEDIATELY.
- ANY DAMAGE TO EXISTING UTILITIES SHALL BE REPAIRED BY THE UTILITY COMPANY AT THE CONTRACTOR'S EXPENSE.
- THE CONTRACTOR SHALL USE ALL NECESSARY PRECAUTIONARY AND PROTECTIVE MEASURES REQUIRED TO MAINTAIN AND PROTECT EXISTING UTILITIES, SEWERS, MAINS AND APPURTENANCES THAT MUST BE KEPT IN OPERATION. IN PARTICULAR, THE CONTRACTOR SHALL TAKE ADEQUATE MEASURES TO PREVENT THE UNDERMINING OF UTILITIES, SEWERS AND MAINS WHICH WILL REMAIN IN SERVICE. THE CONTRACTOR SHALL COORDINATE WITH THE ENGINEER AND UTILITY COMPANY IF IT IS DETERMINED THAT TEMPORARY BRACING OR SUPPORT OF THE UTILITIES IS REQUIRED. THE PROTECTION AND/OR TEMPORARY BRACING OR SUPPORT OF UTILITIES WILL NOT BE PAID FOR SEPARATELY BUT SHALL BE CONSIDERED AS INCLUDED IN THE UNIT BID PRICES OF THE CONTRACT AND NO ADDITIONAL COMPENSATION WILL BE ALLOWED.
- THE CONTRACTOR WILL NOT BE PERMITTED TO SET UP A YARD OR FIELD OFFICE ON STATE OR VILLAGE PROPERTY WITHOUT PRIOR WRITTEN PERMISSION OF THE VILLAGE.
- ALL APPLICABLE PROVISIONS OF THE CURRENT OCCUPATIONAL SAFETY AND HEALTH ACT ARE HEREIN INCORPORATED BY REFERENCE.
- EXCEPT WHERE MODIFIED BY THE CONTRACT DOCUMENTS, ALL WORK PROPOSED HEREON SHALL BE IN ACCORDANCE WITH THE FOLLOWING SPECIFICATIONS WHICH ARE HEREBY MADE A PART HEREOF:
 - "STANDARD SPECIFICATIONS FOR ROAD AND BRIDGE CONSTRUCTION IN ILLINOIS," AS PREPARED BY IDOT, LATEST EDITION.
 - "SUPPLEMENTAL SPECIFICATIONS AND RECURRING SPECIAL PROVISIONS," AS PREPARED BY IDOT, LATEST EDITION.
 - THE LATEST EDITIONS OF THE MUNICIPAL CODE AND STANDARDS OF THE VILLAGE OF VILLA PARK.
 - THE ILLINOIS ACCESSIBILITY CODE.
 - "MANUAL ON UNIFORM TRAFFIC CONTROL DEVICES FOR STREETS AND HIGHWAYS," LATEST EDITION.
 - "STANDARD SPECIFICATIONS FOR WATER AND SEWER MAIN CONSTRUCTION IN ILLINOIS AS PUBLISHED BY THE IEPA," LATEST EDITION.
 - ILLINOIS RECOMMENDED STANDARDS FOR SEWAGE WORKS," AS PUBLISHED BY THE IEPA, LATEST EDITION.
 - "MANUAL OF TEST PROCEDURES FOR MATERIALS," LATEST EDITION
 - "ILLINOIS URBAN MANUAL," LATEST EDITION

GENERAL NOTES (CONTD.)

- THE ENGINEER AND VILLAGE OF VILLA PARK ARE NOT RESPONSIBLE FOR THE CONSTRUCTION MEANS, METHODS, TECHNIQUES, SEQUENCES OR PROCEDURES, TIME OF PERFORMANCE, PROGRAMS OR ANY SAFETY PRECAUTIONS USED BY THE CONTRACTOR. THE CONTRACTOR IS SOLELY RESPONSIBLE FOR EXECUTION OF HIS/HER WORK IN ACCORDANCE WITH THE CONTRACT DOCUMENTS AND SPECIFICATIONS.
- THE CONTRACTOR IS RESPONSIBLE FOR HAVING A SET OF "APPROVED" ENGINEERING PLANS WITH THE LATEST REVISION DATE ON THE JOB SITE PRIOR TO THE START OF CONSTRUCTION AND AT ALL TIMES DURING CONSTRUCTION.
- AREAS OUTSIDE THE R.O.W. LINE OR CONSTRUCTION LIMIT LINE IMPACTED BY OPERATIONS OF THE CONTRACTOR SHALL BE RETURNED TO THE STATE IT WAS FOUND PRIOR TO NEW CONSTRUCTION, EXCEPT WHERE NEW WORK IS SHOWN.
- CONTRACTOR SHALL MAINTAIN ACCESS TO ALL PROPERTIES AND SIDE ROADS AT ALL TIMES DURING CONSTRUCTION OPERATIONS, UNLESS OTHERWISE NOTED ON PLANS.
- ALL PROPOSED AND EXISTING LOCATIONS, ELEVATIONS OF UTILITIES, AND IMPROVEMENTS ARE APPROXIMATE AND SHOULD BE VERIFIED PRIOR TO THE COMMENCEMENT OF WORK.

REMOVALS AND PAVING NOTES

- ALL EXISTING PAVEMENT OR CONCRETE CURB AND GUTTER TO BE REMOVED SHALL BE SAWCUT ALONG LIMITS OF PROPOSED REMOVAL BEFORE COMMENCEMENT OF PAVEMENT REMOVAL. THE COST OF THE SAW CUT SHALL BE INCLUDED IN THE COST OF ITEM BEING REMOVED.
- REMOVED PAVEMENT, SIDEWALK, CURB AND GUTTER, ETC. SHALL BE DISPOSED OF BY THE CONTRACTOR AT THEIR OWN EXPENSE. THE CONTRACTOR SHALL BE RESPONSIBLE FOR PROVIDING AN OFF-SITE DUMP SITE AT THEIR OWN EXPENSE.
- NO HOLES ARE TO BE LEFT OPEN IN THE PAVEMENT OR PARKWAY OVER A HOLIDAY, WEEKEND OR AFTER 3:00 P.M. ON THE DAY PRECEDING A HOLIDAY OR A WEEKEND.
- STREET PAVING AND CURBS TO REMAIN SHALL BE PROTECTED FROM DAMAGE. IF DAMAGED, IT SHALL BE REPLACED PROMPTLY IN CONFORMANCE WITH THE MUNICIPALITY OR IDOT STANDARD SPECIFICATIONS IN MATERIALS AND WORKMANSHIP AND AT THE CONTRACTOR'S EXPENSE.
- ALL CURB RADII REFER TO EDGE OF PAVMENT UNLESS OTHERWISE NOTED.
- ASPHALT JOINTS FOR BINDER COURSES ARE TO BE STAGGERED.
- PROPOSED ELEVATIONS INDICATE FINISHED CONDITIONS. FOR ROUGH GRADING ELEVATIONS ALLOW FOR THICKNESS OF PROPOSED PAVING (ROADS, WALKS, DRIVES, ETC.) OR TOPSOIL AS INDICATED ON DRAWINGS.

MAINTENANCE OF TRAFFIC NOTES

- TRAFFIC CONTROL AND PROTECTION SHALL BE PERFORMED IN ACCORDANCE WITH THE MAINTENANCE OF TRAFFIC NOTES AND PROTECTION SECTION 701 OF THE STANDARD SPECIFICATIONS.
- THE CONTRACTOR SHALL BE RESPONSIBLE FOR THE INSTALLATION AND MAINTENANCE OF ADEQUATE SIGNS, TRAFFIC CONTROL DEVICES AND WARNING DEVICES TO INFORM AND PROTECT THE PUBLIC DURING ALL PHASES OF CONSTRUCTION. BARRICADES AND WARNING SIGNS SHALL BE PROVIDED IN ACCORDANCE WITH ARTICLE 107.14 OF THE IDOT STANDARD SPECIFICATIONS. ALL TRAFFIC CONTROL WORK SHALL BE DONE IN ACCORDANCE WITH IDOT "MANUAL ON UNIFORM TRAFFIC CONTROL DEVICES."
- ALL SIGNS SHALL BE IN ACCORDANCE WITH IDOT STANDARD SPECIFICATIONS, LATEST EDITION, AND THE MANUAL ON UNIFORM TRAFFIC CONTROL DEVICES, LATEST EDITION.
- THE COST OF SUPPLYING, ERECTING, AND MAINTAINING TRAFFIC CONTROL DEVICES, LIGHTS, AND SIGNS SHALL BE INCLUDED IN THE CONTRACT PRICE FOR TRAFFIC CONTROL AND PROTECTION, SPECIAL.
- THE CONTRACTOR SHALL PERFORM ALL WORK BETWEEN THE WEEKDAY HOURS OF 7:00AM AND 5:00PM, UNLESS OTHERWISE ALLOWED BY THE ENGINEER.
- ALL TRAFFIC CONTROL DEVICES SHALL BE MAINTAINED THROUGH THE COMPLETION OF THE CONTRACT.
- SIGNAGE SHOWN ON THE MOT PLANS THAT ARE IN CONFLICT WITH EXISTING SIGNAGE WILL BE REQUIRED TO BE RELOCATED. ALL SIGNAGE SHALL BE KEPT IN THE CONDITION IT WAS REMOVED IN, OR SHALL BE REPLACED IN KIND AT THE EXPENSE OF THE CONTRACTOR. SIGNS ARE TO BE REINSTALLED ONCE THE PROJECT IS COMPLETE AND IS INCLUDED IN THE CONTRACT PRICE FOR TRAFFIC CONTROL AND PROTECTION SPECIAL.
- WORK ZONE SIGNING AND STRIPING SHALL BE DONE IN ACCORDANCE WITH IDOT STANDARD 701501, 701901, AND AS SHOWN IN THE PLANS.
- THE AREA THE CONTRACTOR SHALL BE INSTALLING SEWERS SHALL USE HIGHWAY STANDARD 701501 WITH FLAGGERS. THE ROAD SHALL BE OPEN TO ONE-WAY TRAFFIC AT THE END OF THE DAY. THE HOLE SHALL BE PROTECTED AND ALL DRIVEWAYS SHALL BE OPEN.

DRAINAGE NOTES

- DURING CONSTRUCTION, THE CONTRACTOR SHALL MAINTAIN ALL SURFACE DRAINAGE WITHIN THE PROJECT LIMITS. ALL STORM FLOW MUST BE MAINTAINED AT ALL TIMES, UNLESS OTHERWISE DIRECTED BY ENGINEER.
- WHENEVER LOOSE MATERIAL IS DEPOSITED IN THE FLOW LINE OF GUTTERS, DRAINAGE STRUCTURES, DITCHES ETC., SUCH THAT THE NATURAL FLOW LINE OF WATER IS OBSTRUCTED, THE LOOSE MATERIAL SHALL BE REMOVED AT THE CLOSE OF EACH WORKING DAY. THIS WORK SHALL BE INCLUDED IN THE COST OF THE CONTRACT.
- ANY EXISTING DRAINAGE FACILITIES DISTURBED OR DAMAGED DURING CONSTRUCTION SHALL BE REPAIRED OR REPLACED BY THE CONTRACTOR AT THEIR EXPENSE. THIS WORK SHALL BE PERFORMED TO THE SATISFACTION OF THE ENGINEER.
- OFFSETS AND TOP OF FRAME OR LID ELEVATIONS FOR STRUCTURES LOCATED IN THE GUTTER ARE GIVEN AT THE EDGE OF PAVEMENT.
- TOP OF FRAME ("RIM") ELEVATIONS GIVEN ON THE PLANS ARE ONLY TO ASSIST THE CONTRACTOR IN DETERMINING THE APPROXIMATE OVERALL HEIGHT OF EACH STRUCTURE. FRAMES ON ALL NEW STRUCTURES SHALL BE ADJUSTED TO THE FINAL ELEVATIONS OF THE AREAS IN WHICH THEY ARE LOCATED, AS PART OF THE STRUCTURE COST.
- UNLESS OTHERWISE INDICATED ON THE PLANS, STORM SEWER PIPE SHALL BE REINFORCED CONCRETE PIPE IN CONFORMANCE WITH IDOT STANDARD SPECIFICATIONS DETERMINATION FOR PIPE CLASS AND CONFORM TO ASTM C-76. JOINT SPECIFICATIONS SHALL MEET ASTM C-443.
- ALL POLYVINYL CHLORIDE (PVC) PIPE SHALL BE 6-INCH TO 15-INCH DIAMETER SDR 26 IN CONFORMANCE WITH IDOT STANDARD SPECIFICATIONS DETERMINATION FOR PIPE CLASS AND CONFORM TO ASTM D-2241. JOINT SPECIFICATIONS SHALL MEET ASTM D-3212.
- THE COST OF MAKING EXISTING STORM SEWER CONNECTIONS TO PROPOSED DRAINAGE STRUCTURES SHALL BE INCLUDED IN THE COST OF THE DRAINAGE STRUCTURE BEING INSTALLED.
- PROVIDE TRENCH BACKFILL IN ACCORDANCE WITH IDOT SPECIFICATIONS.
- THE CONTRACTOR SHALL FURNISH ALL LABOR, EQUIPMENT AND MATERIAL NECESSARY FOR DEWATERING TRENCH EXCAVATIONS AS WELL AS SHORING TRENCH WALLS DURING UTILITY AND STORM SEWER OPERATIONS. THE COST OF COMPLIANCE WITH THE ABOVE, SHALL BE INCLUDED IN THE COST OF THE UTILITY BEING INSTALLED.
- ALL OPEN-LID DRAINAGE STRUCTURES WITHIN THE VICINITY OF THE WORK AREA SHALL BE FITTED WITH AN INLET FILTER FOR THE DURATION OF CONSTRUCTION.

IDOT HIGHWAY STANDARDS

280001-07	TEMPORARY EROSION CONTROL SYSTEMS
602001-02	CATCH BASIN TYPE A
604001-05	FRAMES AND LIDS TYPE 1
604051-04	FRAME AND GRATE TYPE 11
701501-06	URBAN LANE CLOSURE, 2L, 2W, UNDIVIDED
701901-09	TRAFFIC CONTROL DEVICES

IDOT DISTRICT ONE STANDARDS

TC-13	TYPICAL PAVEMENT MARKINGS
-------	---------------------------

VILLAGE STANDARDS

ROAD - 02	COMBINATION CONCRETE CURB AND GUTTER
SANITARY - 03	PIPE INSTALLATION
SANITARY - 05	STANDARD MANHOLE
STORM - 01	CATCH BASIN TYPE "C"
STORM - 15	INLET TYPE "A"
STORM - 21	KOR-N-TEE CONNECTION
STREET - 03	TYPICAL DRIVEWAY APPROACH
STREET - 07	TYPICAL PAVEMENT CROSS-SECTION

MISCELLANEOUS DETAILS

CLASS C PATCHES, SPECIAL (ROADWAYS)
CLASS D PATCHES, SPECIAL (ROADWAYS)
CLEANOUT DETAIL
P.C.C. SIDEWALK, 5 INCH

MODEL: D:\info\... FILE NAME: ...



V3 Companies
7325 Janes Avenue
Woodridge, IL 60517
630.724.9200 phone
630.724.9202 fax
www.v3co.com

USER NAME =	ijanbich
PLOT SCALE =	
PLOT DATE =	9/25/2024

DESIGNED -	LRY
DRAWN -	LRY
CHECKED -	JDH
DATE -	9/25/2024

REVISED -	
REVISED -	
REVISED -	
REVISED -	

VILLA PARK

DCEO DRAINAGE IMPROVEMENT PROJECT (VARIOUS LOCATIONS)

ILLINOIS

GENERAL NOTES

SCALE:	SHEET 1 OF 1 SHEETS	STA.	TO STA.
--------	---------------------	------	---------

F.A. RTE.	SECTION	COUNTY	TOTAL SHEETS	SHEET NO.
			15	2
CONTRACT NO. XXXX				
ILLINOIS		FED. AID PROJECT		

SPECIAL PROVISION	ITEM	UNIT	BASE BID		ALT BID #1	ALT BID #2	TOTAL QUANTITY
			ELLSWORTH DITCH QUANTITY	RIDGE RD QUANTITY	THIRD AVE AND VERMONT ST QUANTITY	YALE AVE QUANTITY	
	EARTH EXCAVATION	CU YD	258				258
	REMOVAL AND DISPOSAL OF UNSUITABLE MATERIAL	CU YD	229				229
*	TRENCH BACKFILL	CU YD		1,004	76	50	1,130
	TOPSOIL FURNISH AND PLACE, 4"	SQ YD	968				968
	GRADING AND SHAPING DITCHES	FOOT	407				407
	SEEDING, CLASS 4A	ACRE	0.20				0.20
	EROSION CONTROL BLANKET	SQ YD	968				968
	INLET AND PIPE PROTECTION	EACH	1				1
*	INLET FILTERS	EACH		7	6	4	17
	STONE RIPRAP, CLASS A3	SQ YD	46				46
	FILTER FABRIC	SQ YD	354				354
	AGGREGATE BASE COURSE, TYPE B 6"	SQ YD		93	25		118
*	PORTLAND CEMENT CONCRETE SIDEWALK 5 INCH	SQ FT		1,580	180		1,727
*	DETECTABLE WARNINGS	SQ FT		10	20		20
*	DRIVEWAY PAVEMENT REMOVAL	SQ YD		93	25		118
*	SIDEWALK REMOVAL	SQ FT		1,580	180		1,727
	STORM SEWER REMOVAL 18"	FOOT		49			49
	MANHOLES TO BE RECONSTRUCTED	EACH		1		1	2
	INLETS TO BE RECONSTRUCTED	EACH		2			2

MODEL: D:\info\...
 FILE NAME: ...
 PROJECT: ...
 SHEET: ...



V3 Companies
 7325 Janes Avenue
 Woodridge, IL 60517
 630.724.9200 phone
 630.724.9202 fax
 www.v3co.com

USER NAME = lryanbich
 DESIGNED - LRY
 DRAWN - LRY
 CHECKED - JDH
 DATE - 9/25/2024

REVISED -
 REVISED -
 REVISED -
 REVISED -

VILLA PARK

DCEO DRAINAGE IMPROVEMENT PROJECT (VARIOUS LOCATIONS)

ILLINOIS

SUMMARY OF QUANTITIES

SCALE: SHEET 1 OF 3 SHEETS STA. TO STA.

F.A. RTE.	SECTION	COUNTY	TOTAL SHEETS	SHEET NO.
		DUPAGE	15	3
CONTRACT NO. XXXX				
ILLINOIS		FED. AID PROJECT		

SPECIAL PROVISION	ITEM	UNIT	BASE BID		ALT BID #1	ALT BID #2	TOTAL QUANTITY
			ELLSWORTH DITCH QUANTITY	RIDGE RD QUANTITY	THIRD AVE AND VERMONT ST QUANTITY	YALE AVE QUANTITY	
*	ABANDON AND FILL EXISTING STORM SEWER	FOOT		40			40
*	CLEANOUTS	EACH				1	1
*	HOT-MIX ASPHALT DRIVEWAY PAVEMENT, 4"	SQ YD		93	25		118
*	12" X 12" NDS YARD DRAIN WITH GRATE	EACH		3	3		6
*	ROUNDED RIVER ROCK (1"-1.5" NOMINAL DIA.), 4" DEPTH	SQ YD	220				220
*	AGGREGATE BASE (CA-1), 8" DEPTH	SQ YD	220				220
*	CLASS C PATCHES, SPECIAL	SQ YD			20		20
*	CLASS D PATCHES, SPECIAL	SQ YD		433		107	540
*	CONCRETE CURB AND GUTTER REMOVAL AND REPLACEMENT	FOOT		286	44	13	327
*	PARKWAY RESTORATION	SQ YD		394	136	18	548
*	INLET, TYPE A, 2' DIAMETER	EACH				1	1
*	CATCH BASIN, TYPE C, 2' DIAMETER	EACH		1	1	1	3
*	CATCH BASIN, TYPE A, 4' DIAMETER	EACH		3			3
*	MANHOLE, TYPE A, 4' DIAMETER	EACH		3			3
*	FRAMES AND LIDS, TYPE 1	EACH		4		1	5
*	FRAMES AND GRATES, TYPE 11	EACH		3	1	1	5
*	STORM SEWERS, PVC, 6" (SDR 26, ASTM D-2241)	FOOT		35	98		133
*	STORM SEWERS, PVC, 8" (SDR 26, ASTM D-2241)	FOOT				10	10
*	STORM SEWERS, PVC, 10" (SDR 26, ASTM D-2241)	FOOT				8	8

MODEL: D:\in\11\2024\11\130 DCEO H22065 Grant Projects\Drawings\Main\CADD_Sheets\110718-11-24-S001.dgn
 FILE NAME: 110718-11-24-S001.dgn



V3 Companies
 7325 Janes Avenue
 Woodridge, IL 60517
 630.724.9200 phone
 630.724.9202 fax
 www.v3co.com

USER NAME = lryanbich
 DESIGNED - LRY
 DRAWN - LRY
 PLOT SCALE =
 CHECKED - JDH
 DATE - 9/25/2024
 REVISIONS:

REVISED -
 REVISED -
 REVISED -
 REVISED -

VILLA PARK

DCEO DRAINAGE IMPROVEMENT PROJECT (VARIOUS LOCATIONS)

ILLINOIS

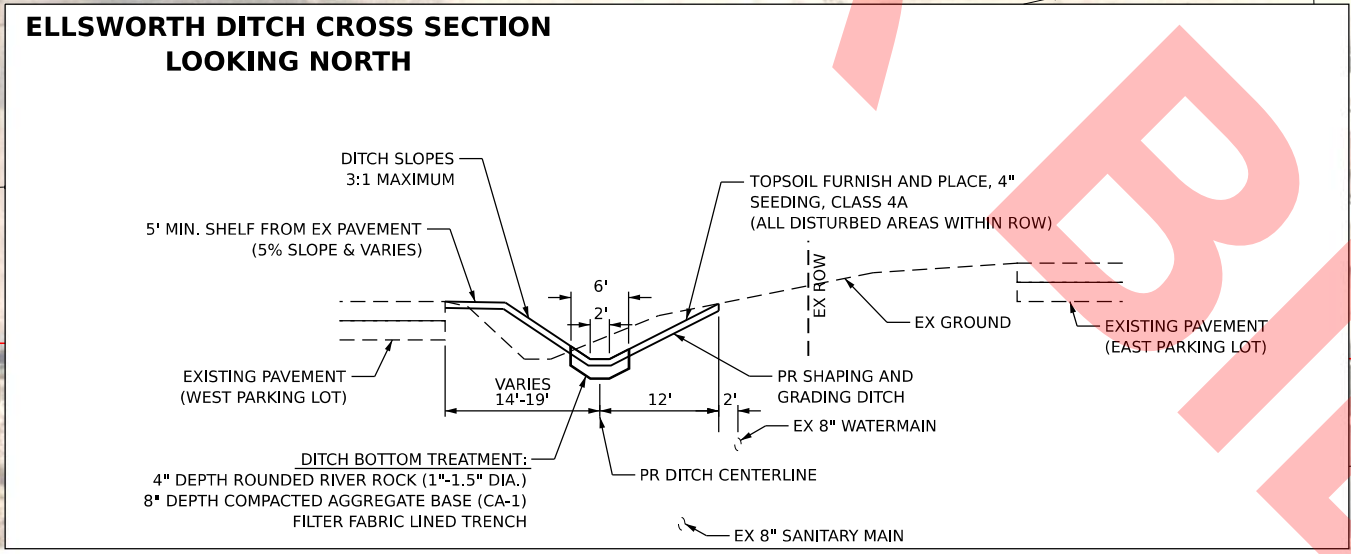
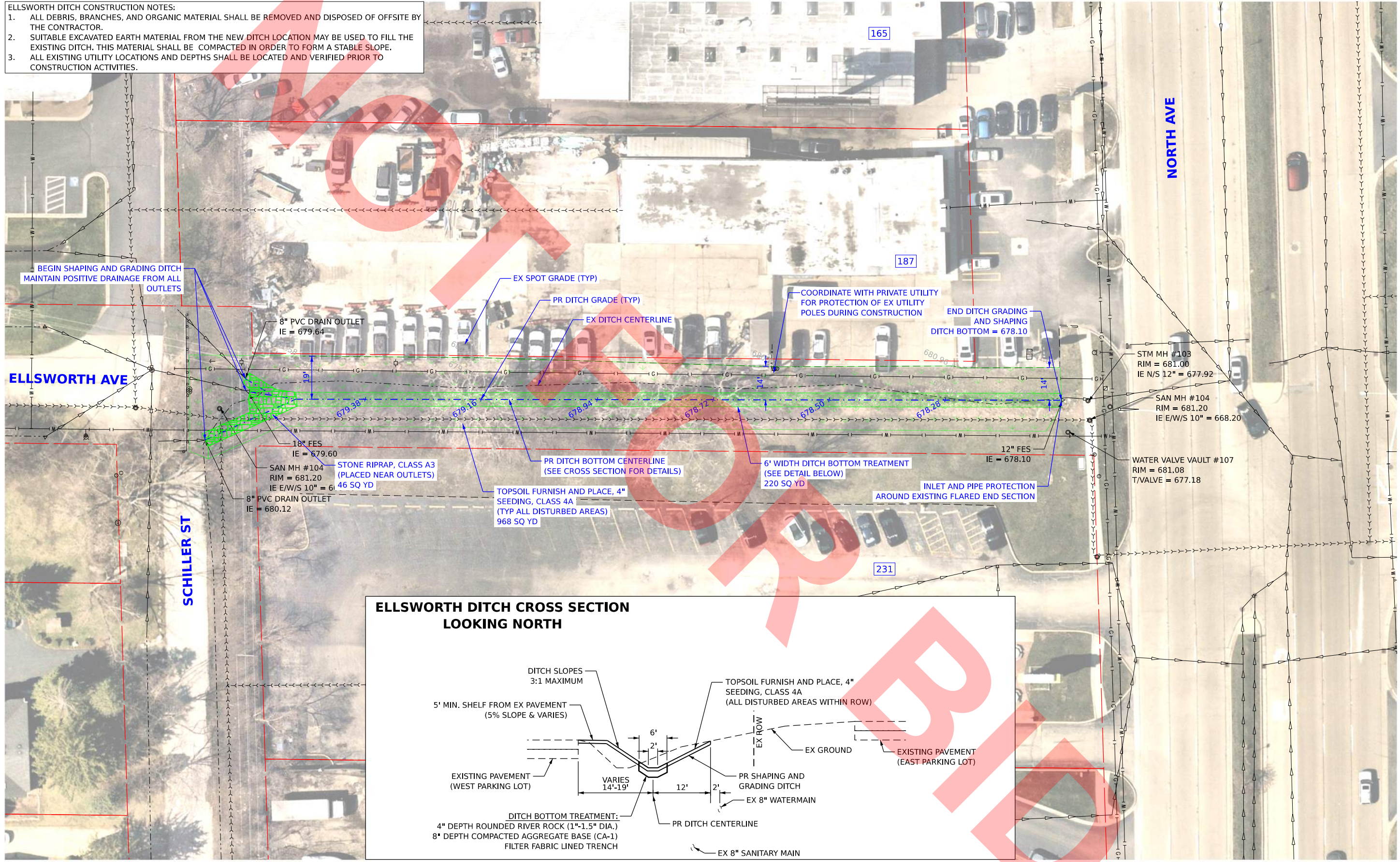
SUMMARY OF QUANTITIES

SCALE: SHEET 2 OF 3 SHEETS STA. TO STA.

F.A. RTE.	SECTION	COUNTY	TOTAL SHEETS	SHEET NO.
		DUPAGE	15	4
CONTRACT NO. XXXX				
ILLINOIS		FED. AID PROJECT		

ELLSWORTH DITCH CONSTRUCTION NOTES:

1. ALL DEBRIS, BRANCHES, AND ORGANIC MATERIAL SHALL BE REMOVED AND DISPOSED OF OFFSITE BY THE CONTRACTOR.
2. SUITABLE EXCAVATED EARTH MATERIAL FROM THE NEW DITCH LOCATION MAY BE USED TO FILL THE EXISTING DITCH. THIS MATERIAL SHALL BE COMPACTED IN ORDER TO FORM A STABLE SLOPE.
3. ALL EXISTING UTILITY LOCATIONS AND DEPTHS SHALL BE LOCATED AND VERIFIED PRIOR TO CONSTRUCTION ACTIVITIES.



MODEL: D:\draft...
 FILE NAME: ...
 PROJECT: ...
 SHEET: ...


 V3 Companies
 7325 Janes Avenue
 Woodridge, IL 60517
 630.724.9200 phone
 630.724.9202 fax
 www.v3co.com

USER NAME =	lryanbich
PLOT SCALE =	
PLOT DATE =	9/25/2024

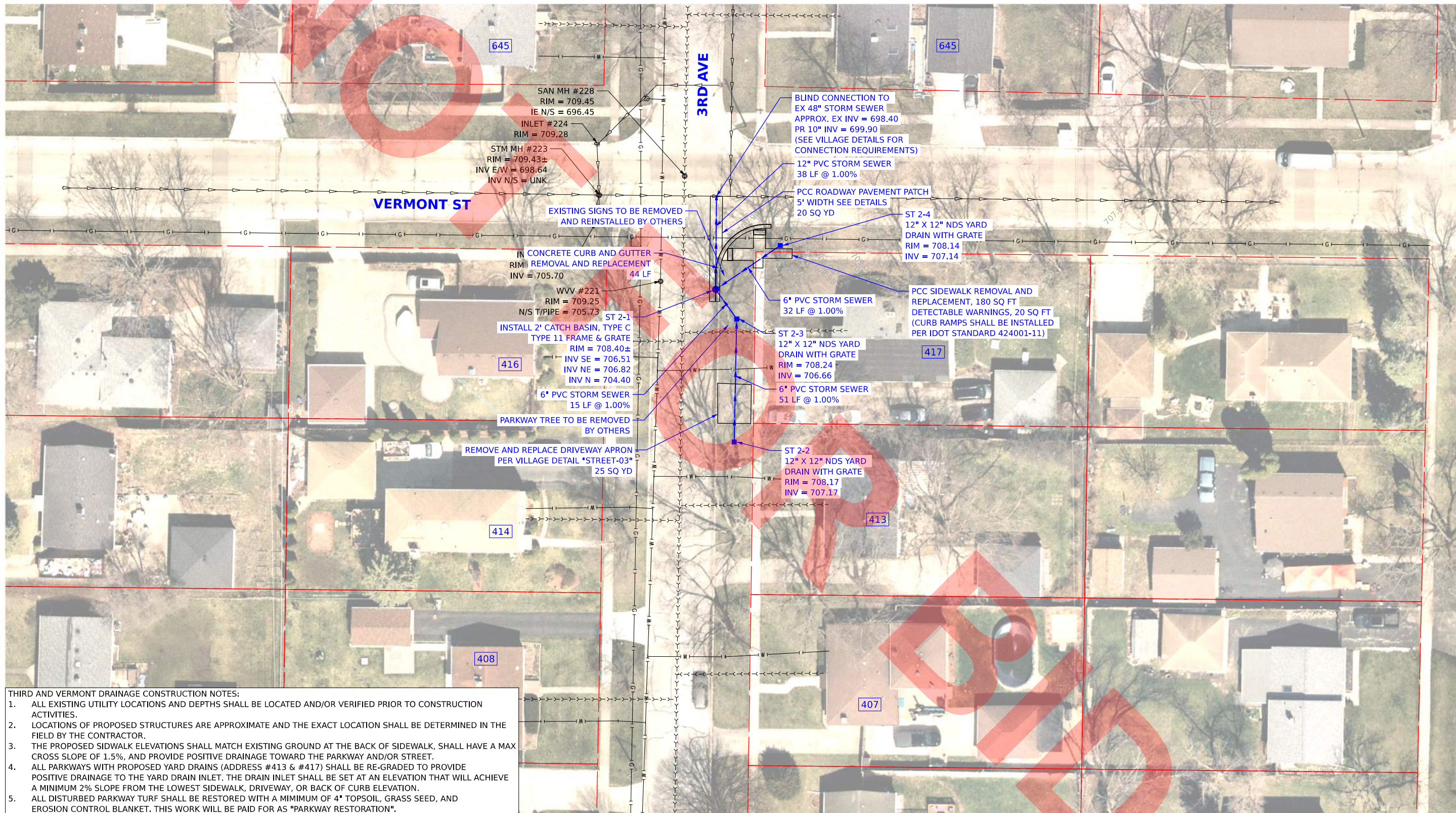
DESIGNED -	LRV
DRAWN -	LRV
CHECKED -	JDH
DATE -	9/25/2024

REVISED -	
REVISED -	
REVISED -	
REVISED -	

VILLA PARK
**DCEO DRAINAGE IMPROVEMENT
PROJECT (VARIOUS LOCATIONS)**

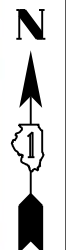
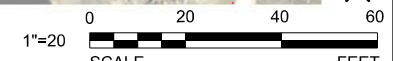
ILLINOIS
 SCALE: 1"=20'
 SHEET 1 OF 1 SHEETS
**ELLSWORTH DITCH
REGRAVING PLAN**
 STA. TO STA.

F.A. RTE.	SECTION	COUNTY	TOTAL SHEETS	SHEET NO.
		DUPAGE	15	6
CONTRACT NO. XXXX				
ILLINOIS FED. AID PROJECT				

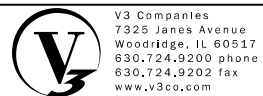


THIRD AND VERMONT DRAINAGE CONSTRUCTION NOTES:

1. ALL EXISTING UTILITY LOCATIONS AND DEPTHS SHALL BE LOCATED AND/OR VERIFIED PRIOR TO CONSTRUCTION ACTIVITIES.
2. LOCATIONS OF PROPOSED STRUCTURES ARE APPROXIMATE AND THE EXACT LOCATION SHALL BE DETERMINED IN THE FIELD BY THE CONTRACTOR.
3. THE PROPOSED SIDEWALK ELEVATIONS SHALL MATCH EXISTING GROUND AT THE BACK OF SIDEWALK, SHALL HAVE A MAX CROSS SLOPE OF 1.5%, AND PROVIDE POSITIVE DRAINAGE TOWARD THE PARKWAY AND/OR STREET.
4. ALL PARKWAYS WITH PROPOSED YARD DRAINS (ADDRESS #413 & #417) SHALL BE RE-GRADED TO PROVIDE POSITIVE DRAINAGE TO THE YARD DRAIN INLET. THE DRAIN INLET SHALL BE SET AT AN ELEVATION THAT WILL ACHIEVE A MINIMUM 2% SLOPE FROM THE LOWEST SIDEWALK, DRIVEWAY, OR BACK OF CURB ELEVATION.
5. ALL DISTURBED PARKWAY TURF SHALL BE RESTORED WITH A MINIMUM OF 4" TOPSOIL, GRASS SEED, AND EROSION CONTROL BLANKET. THIS WORK WILL BE PAID FOR AS "PARKWAY RESTORATION".



MODEL: D:\v3\180718\071801\130_DCEO_H22065_Grant_Parkway\Drawings\Main\CADD_Sheets\101718-18-18-18-18.dgn
 FILE NAME: 18071801\130_DCEO_H22065_Grant_Parkway\Drawings\Main\CADD_Sheets\101718-18-18-18.dgn



V3 Companies
7325 Janes Avenue
Woodridge, IL 60517
630.724.9200 phone
630.724.9202 fax
www.v3co.com

USER NAME =	lryanbich
DESIGNED -	LRV
DRAWN -	LRV
CHECKED -	JDH
DATE -	9/25/2024

REVISED -	
REVISED -	
REVISED -	
REVISED -	

VILLA PARK

DCEO DRAINAGE IMPROVEMENT PROJECT (VARIOUS LOCATIONS)

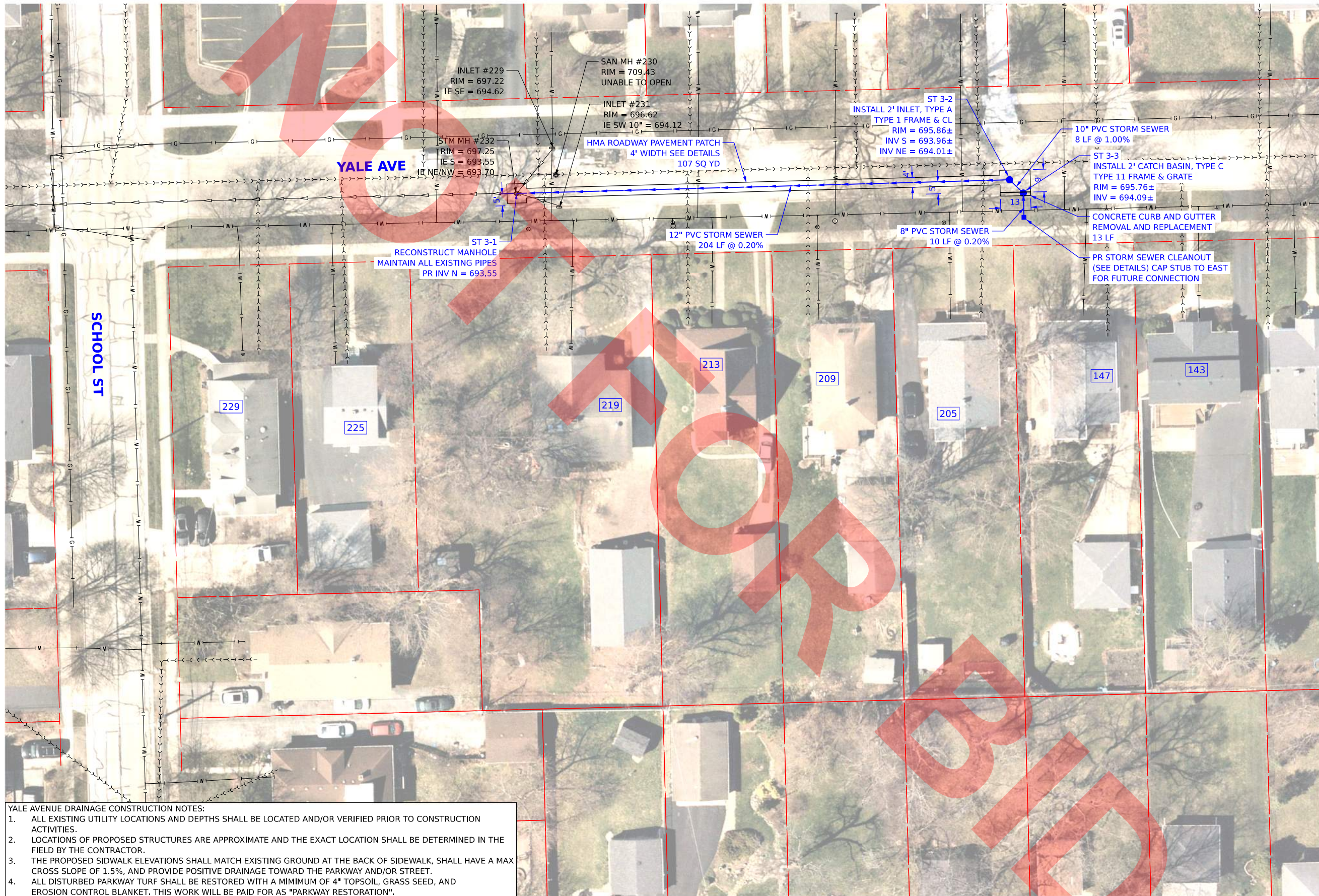
ILLINOIS

THIRD AVENUE AND VERMONT STREET DRAINAGE IMPROVEMENTS

SCALE: 1"=20'

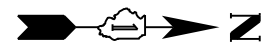
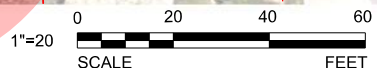
SHEET 1 OF 1 SHEETS STA. TO STA.

F.A. RTE.	SECTION	COUNTY	TOTAL SHEETS	SHEET NO.
		DUPAGE	15	9
CONTRACT NO. XXXX				
ILLINOIS FED. AID PROJECT				

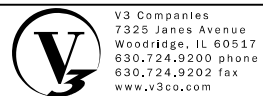


YALE AVENUE DRAINAGE CONSTRUCTION NOTES:

1. ALL EXISTING UTILITY LOCATIONS AND DEPTHS SHALL BE LOCATED AND/OR VERIFIED PRIOR TO CONSTRUCTION ACTIVITIES.
2. LOCATIONS OF PROPOSED STRUCTURES ARE APPROXIMATE AND THE EXACT LOCATION SHALL BE DETERMINED IN THE FIELD BY THE CONTRACTOR.
3. THE PROPOSED SIDEWALK ELEVATIONS SHALL MATCH EXISTING GROUND AT THE BACK OF SIDEWALK, SHALL HAVE A MAX CROSS SLOPE OF 1.5%, AND PROVIDE POSITIVE DRAINAGE TOWARD THE PARKWAY AND/OR STREET.
4. ALL DISTURBED PARKWAY TURF SHALL BE RESTORED WITH A MINIMUM OF 4\"/>



MODEL: D:\proj\180707\180707_130_DCEO_H22085_Grant_Parkway\Drawings\Main\CADD_Sheet\101718-hsh-hdwy-mh-1.dwg
 FILE NAME: 180707_180707_130_DCEO_H22085_Grant_Parkway\Drawings\Main\CADD_Sheet\101718-hsh-hdwy-mh-1.dwg



V3 Companies
 7325 Janes Avenue
 Woodridge, IL 60517
 630.724.9200 phone
 630.724.9202 fax
 www.v3co.com

USER NAME =	lryanbich
DESIGNED -	LRV
DRAWN -	LRV
CHECKED -	JDH
DATE -	9/25/2024

REVISED -	
REVISED -	
REVISED -	
REVISED -	

VILLA PARK

DCEO DRAINAGE IMPROVEMENT PROJECT (VARIOUS LOCATIONS)

ILLINOIS

SCALE: 1"=20'	SHEET 1	OF 1	SHEETS	STA.	TO STA.
---------------	---------	------	--------	------	---------

205 S. YALE AVENUE DRAINAGE IMPROVEMENTS

F.A. RTE.	SECTION	COUNTY	TOTAL SHEETS	SHEET NO.
		DUPAGE	15	10
CONTRACT NO. XXXX				
ILLINOIS FED. AID PROJECT				

2-LANE ROADWAY

MULTI-LANE UNDIVIDED

MULTI-LANE DIVIDED WITH MEDIAN

TYPICAL LANE AND EDGE LINE MARKING

TYPICAL CROSSWALK MARKING

TYPICAL PAINTED MEDIAN MARKING

TYPICAL LEFT (OR RIGHT) TURN LANE MARKING

TYPICAL TURN LANE MARKING

COMBINATION LEFT AND U-TURN

U-TURN

LANE REDUCTION TRANSITION

TYPE OF MARKING	WIDTH OF LINE	PATTERN	COLOR	SPACING / REMARKS
CENTRALLINE ON 2-LANE PAVEMENT	4 (100)	SOLID	YELLOW	10' (3.0) MIN. SPACING
CENTRALLINE ON MULTI-LANE UNDIVIDED PAVEMENT	2 @ 4 (100)	SOLID	YELLOW	10' (3.0) MIN. SPACING
NO PASSING ZONE LINES FOR ONE DIRECTION FOR BOTH DIRECTIONS	4 (100)	SOLID	YELLOW	10' (3.0) MIN. SPACING
LANE LINES	4 (100)	SOLID	WHITE	10' (3.0) MIN. SPACING
DOTTED LINES	4 (100)	SPACED	WHITE	10' (3.0) MIN. SPACING
EDGE LINES	4 (100)	SOLID	YELLOW/LEFT WHITE/RIGHT	OUTLINE MEDIANS IN YELLOW
TURN LANE MARKINGS	6 (150) LINE FULL SIZE LETTERS 8 (200) SPACED 10' (3.0)	SOLID	WHITE	SEE TYPICAL TURN LANE MARKING DETAIL
TWO WAY LEFT TURN MARKING	8 (200) LEFT ARROW	SOLID	WHITE	SEE TYPICAL TURN LANE MARKING DETAIL
CHOWDAW LINES (PROHIBITION)	2 @ 6 (150)	SOLID	WHITE	NOT LESS THAN 6' (1.8) MIN. APART
STOP LINES	24 (600)	SOLID	WHITE	SEE TYPICAL CROSSWALK MARKING DETAIL
PAINTED MEDIANS	2 @ 4 (100) WITH 12 (300) DIAGONALS @ 45°	SOLID	YELLOW	SEE TYPICAL PAINTED MEDIAN MARKING DETAIL
DOOR MARKING AND CHANNELING LINES	8 (200) WITH 12 (300) DIAGONALS @ 45°	SOLID	WHITE	SEE TYPICAL DOOR MARKING DETAIL
RAILROAD CROSSING	24 (600) TRANSVERSE LINES WITH 12 (300) DIAGONALS @ 45°	SOLID	WHITE	SEE TYPICAL RAILROAD CROSSING MARKING DETAIL
SHOULDER DIAGONALS (REQUIRED FOR SHOULDER 2' @ 1')	12 (300) @ 45°	SOLID	WHITE - RIGHT YELLOW - LEFT	SEE TYPICAL SHOULDER MARKING DETAIL
U-TURN ARROW	30.4 (7.7)	SOLID	WHITE	SEE TYPICAL U-TURN ARROW MARKING DETAIL
2 ARROW COMBINATION LEFT AND U-TURN	30.4 (7.7)	SOLID	WHITE	SEE TYPICAL U-TURN ARROW MARKING DETAIL

STATE OF ILLINOIS DEPARTMENT OF TRANSPORTATION

DISTRICT ONE TYPICAL PAVEMENT MARKINGS

SCALE: NONE SHEET 3 OF 5 SHEETS STA. TO STA.

STEP 1

STEP 2

ATTACHING TWO SILT FILTER FENCES

SILT FILTER J-HOOK PLACEMENT

J-HOOK

AGGREGATE DITCH CHECK

SECTION B-B

ELEVATION

SILT FILTER FENCE AS A PERIMETER EROSION BARRIER

SECTION A-A

GENERAL NOTES

The installation details and dimensions shown for perimeter erosion barriers shall also apply for inlet and pipe protection.

All dimensions are in inches (millimeters) unless otherwise shown.

TEMPORARY EROSION CONTROL SYSTEMS

STANDARD 280001-07

REVISIONS

DATE	REVISIONS
1-1-13	Corrected rotation for flowline (E) on SEDIMENT BASIN ELEVATION
1-1-12	Omitted hay/straw perimeter barrier. Added SLICE METHOD to SECTION A-A

INLET AND PIPE PROTECTION

ELEVATION

PLAN

TYPICAL CUT CROSS-SECTION

TYPICAL FILL CROSS-SECTION

TEMPORARY DITCHES FOR CUT & FILL SECTIONS

TEMPORARY EROSION CONTROL SYSTEMS

STANDARD 280001-07

REVISIONS

DATE	REVISIONS
1-1-19	Removed "15-foot rule", added "blended transitions" and placement tolerances for detectable warnings. Omitted diagonal slope at turning spaces and lower landings.

RAMPS IN LANDSCAPED AREA SETBACK ≤ 5'

RAMPS IN PAVED AREA SETBACK ≤ 5'

SECTION A-A

SECTION B-B

DETAIL A

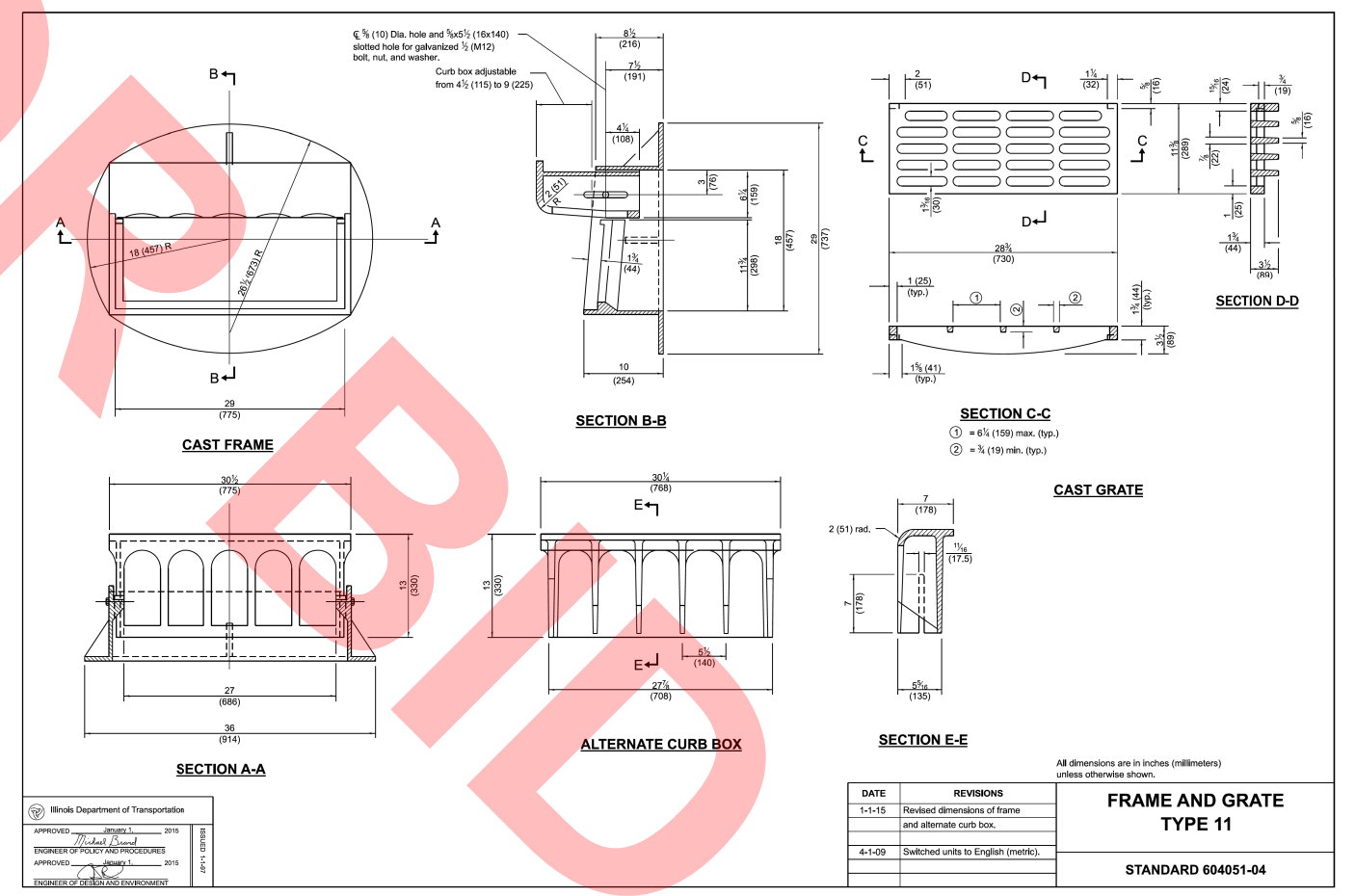
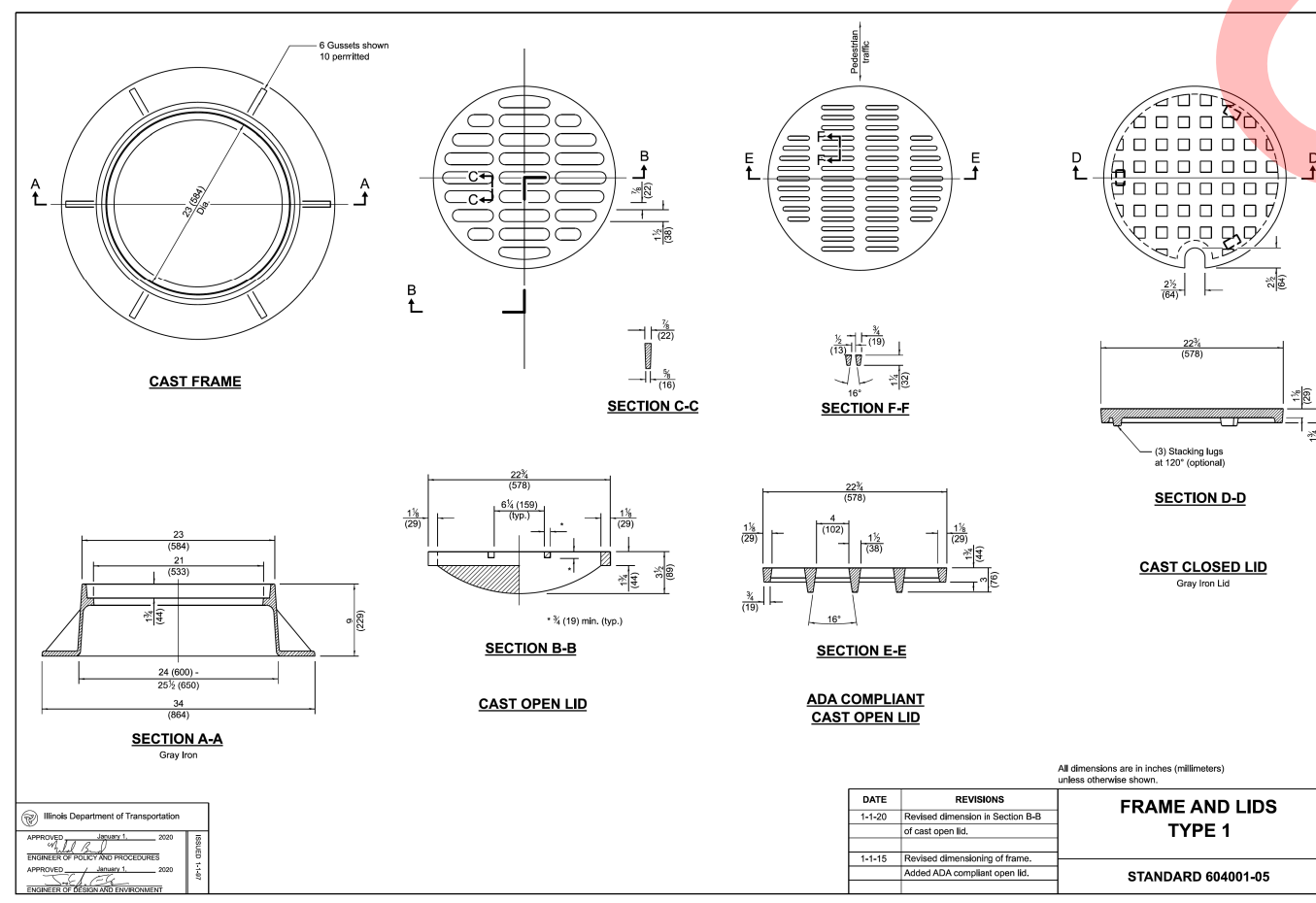
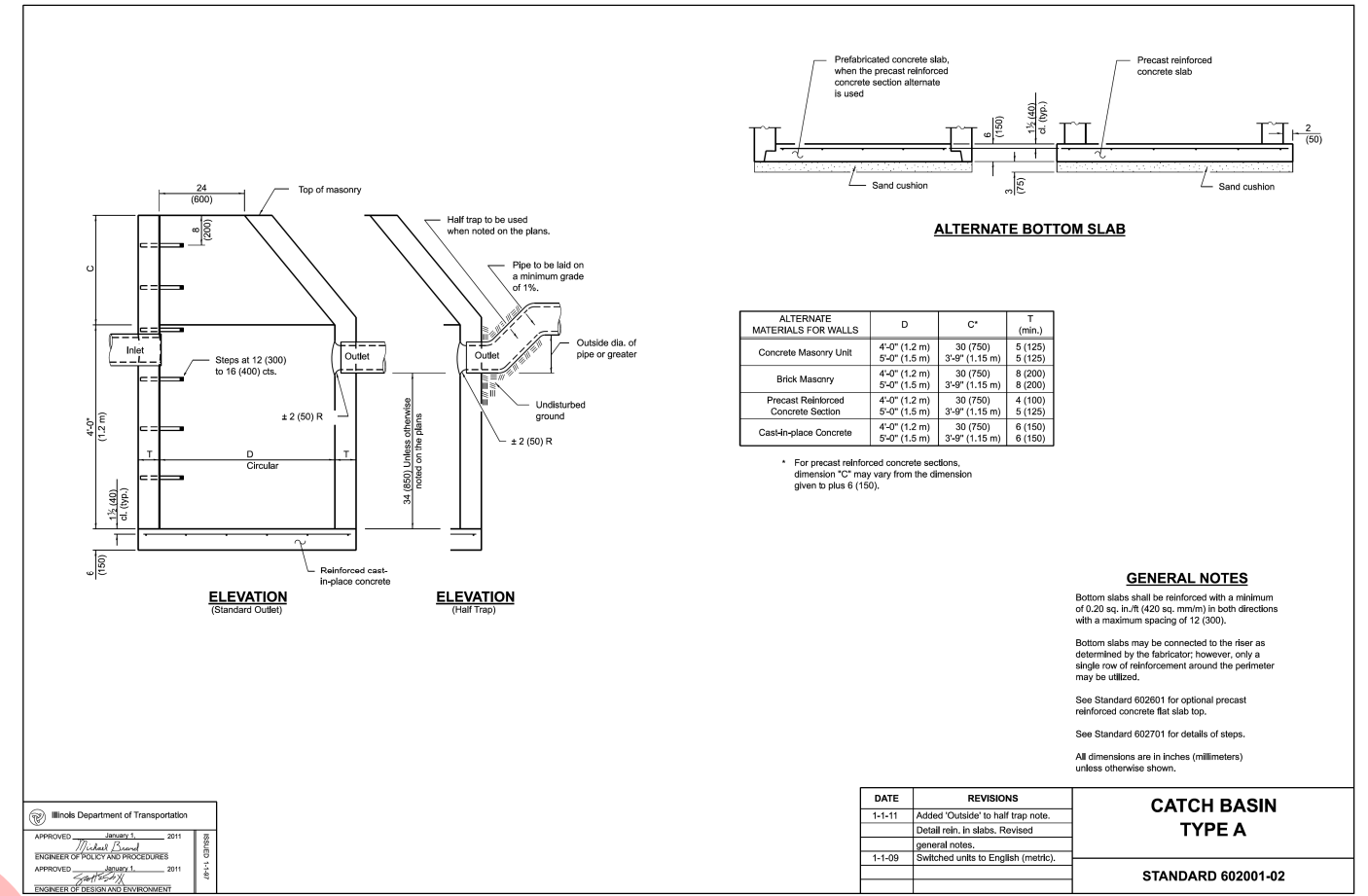
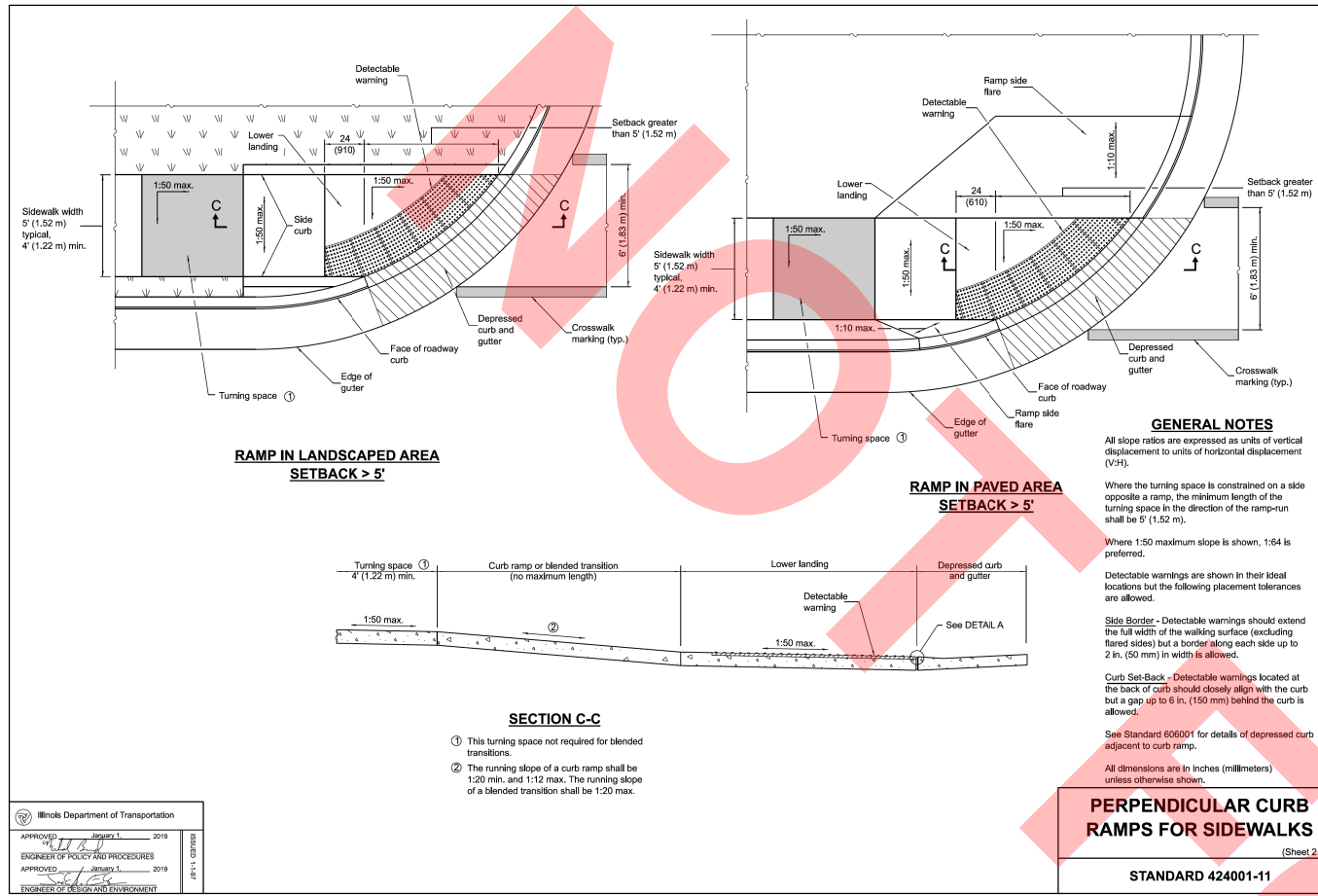
SIDE CURB DETAIL

PERPENDICULAR CURB RAMPS FOR SIDEWALKS

STANDARD 424001-11

REVISIONS

DATE	REVISIONS
1-1-19	Removed "15-foot rule", added "blended transitions" and placement tolerances for detectable warnings. Omitted diagonal slope at turning spaces and lower landings.



MODEL: D:\in\1...
FILE NAME: ...
DCEO Drainage Improvement Project

V3 Companies
7325 Janes Avenue
Woodridge, IL 60517
630.724.9200 phone
630.724.9202 fax
www.v3co.com

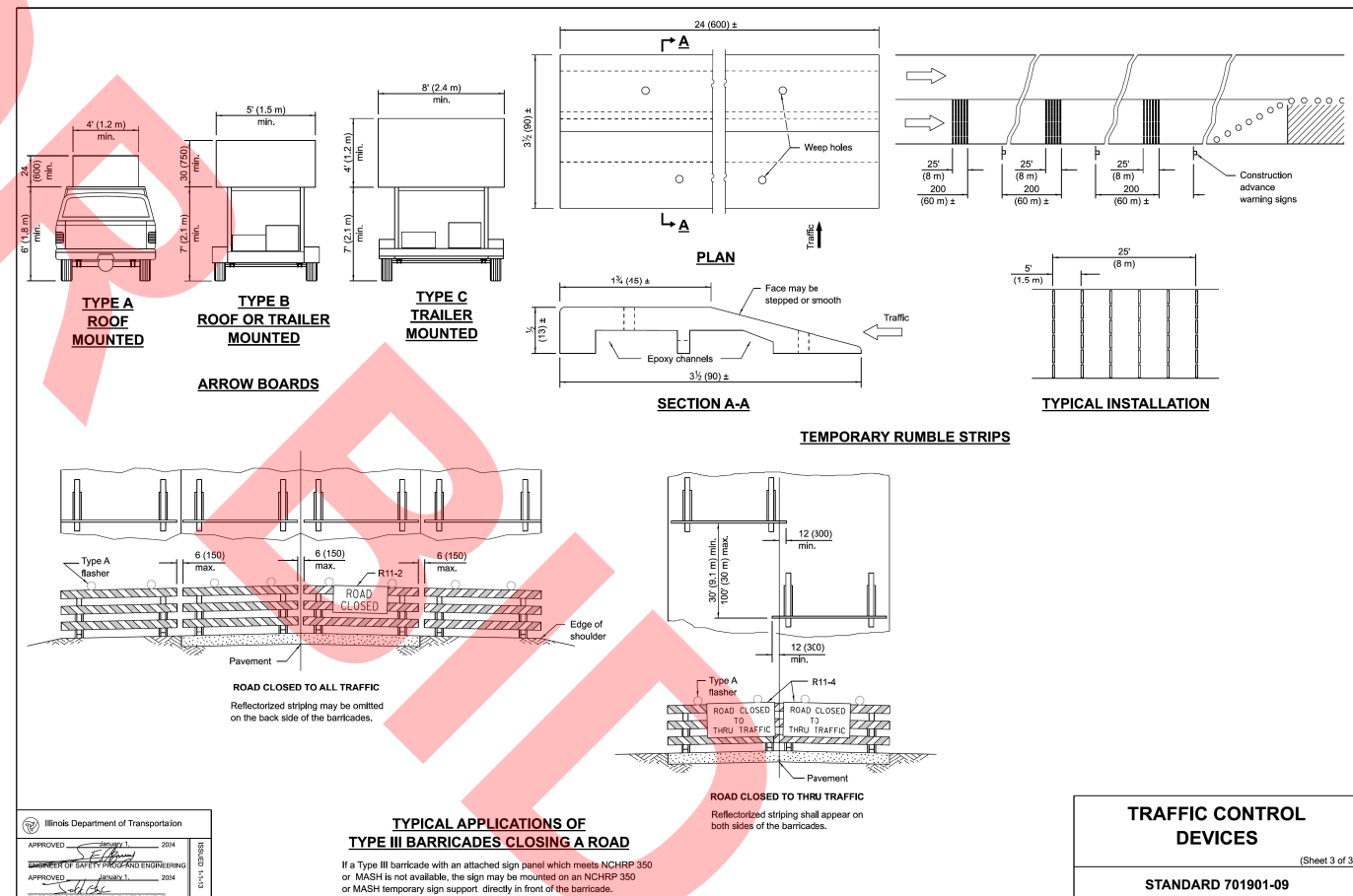
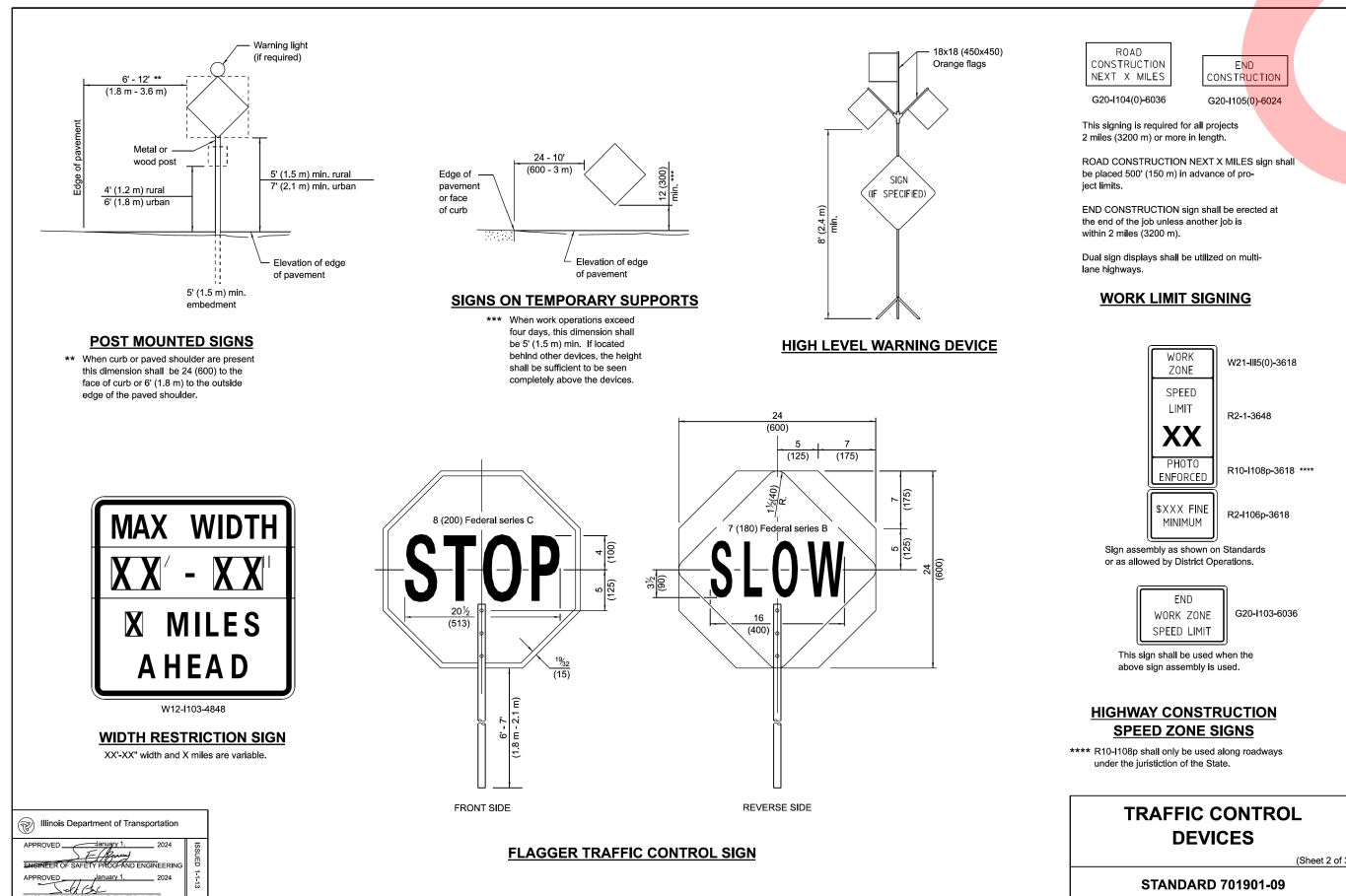
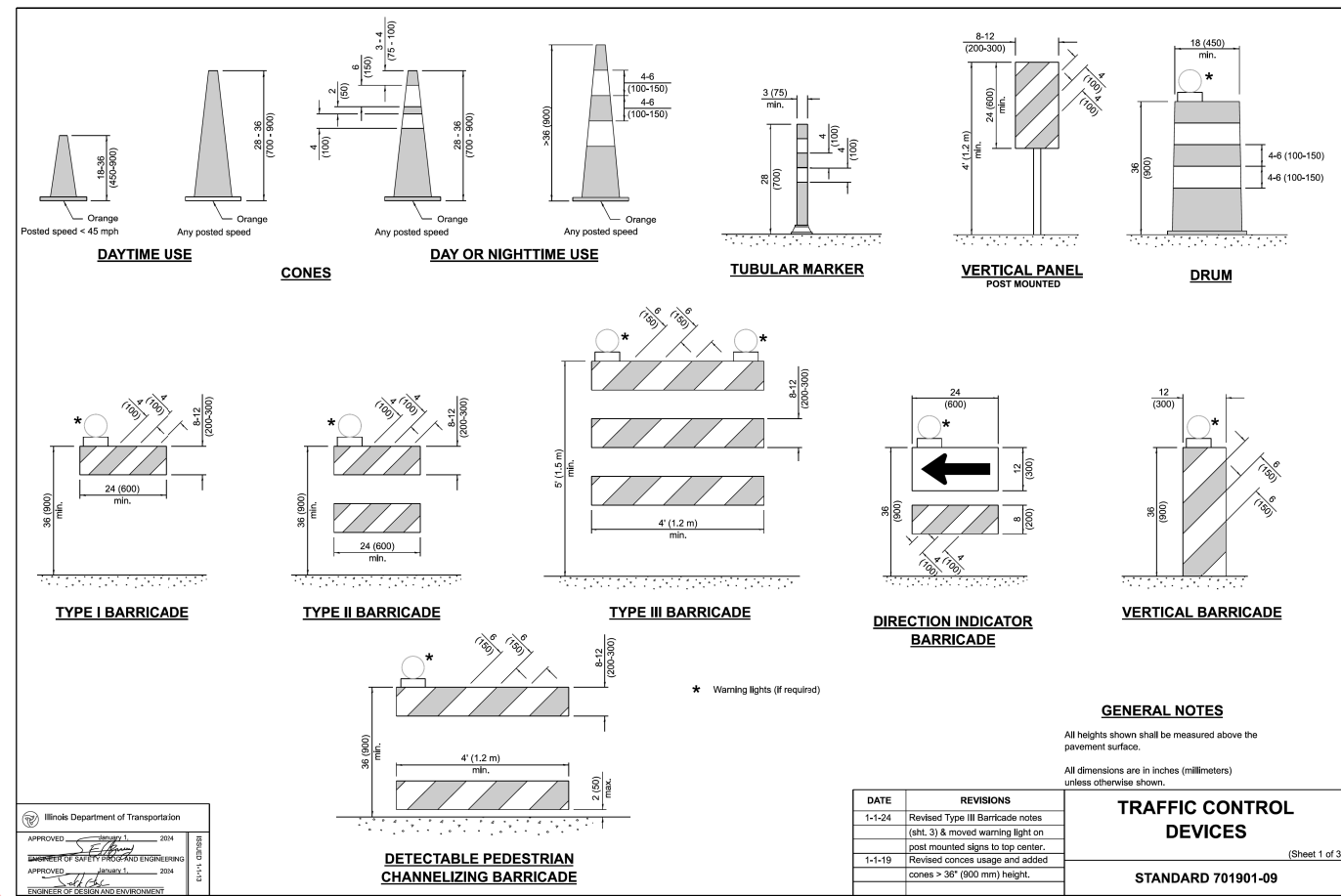
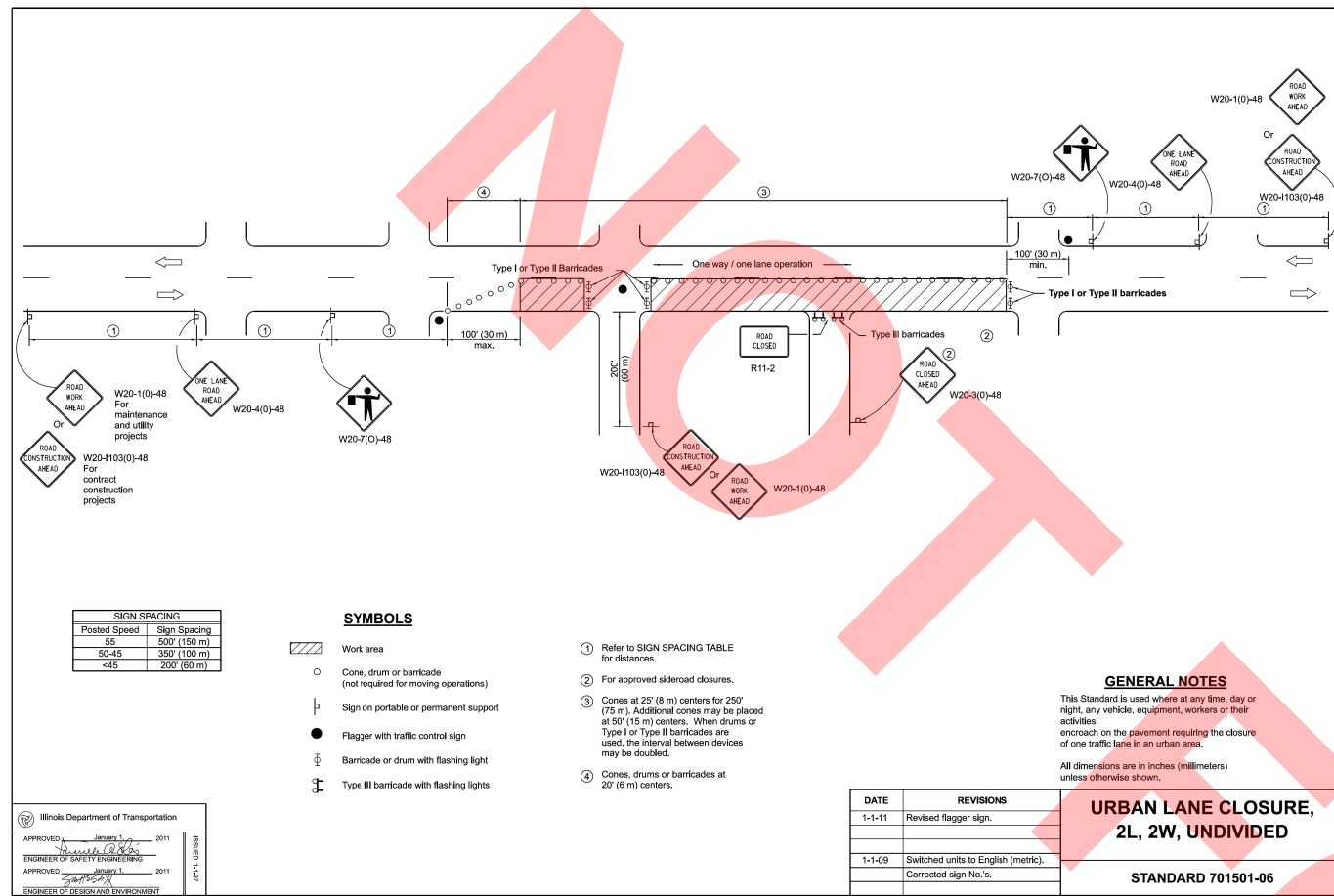
USER NAME = lyanich	DESIGNED - LRY	REVISIONS	DATE
PLOT SCALE =	DRAWN - LRY	1-1-20	Revised dimension in Section B-B of cast open lid.
PLOT DATE = 9/25/2024	CHECKED - JDH	1-1-15	Revised dimensioning of frame. Added ADA compliant open lid.
	DATE = 9/25/2024		

**DCEO DRAINAGE IMPROVEMENT
PROJECT (VARIOUS LOCATIONS)**
VILLA PARK

ILLINOIS	SCALE:	SHEET 4 OF 5 SHEETS	STA.	TO STA.
----------	--------	---------------------	------	---------

CONSTRUCTION DETAILS

F.A. RTE.	SECTION	COUNTY	TOTAL SHEETS	SHEET NO.
		DUPAGE	15	14
CONTRACT NO. XXXX				
ILLINOIS FED. AID PROJECT				



MODEL: D:\in\11301\11301.DCEO Drainage Improvement\CAAD_Sheet\101710-1130-1130-1130.dgn



V3 Companies
 7325 Janes Avenue
 Woodridge, IL 60517
 630.724.9200 phone
 630.724.9202 fax
 www.v3co.com

USER NAME =	lryanich	DESIGNED -	LRV	REVISED -	
PLOT SCALE =		DRAWN -	LRV	REVISED -	
PLOT DATE =	9/25/2024	CHECKED -	JDH	REVISED -	
		DATE -	9/25/2024	REVISED -	

VILLA PARK
DCEO DRAINAGE IMPROVEMENT PROJECT (VARIOUS LOCATIONS)

ILLINOIS
 SCALE: SHEET 5 OF 5 SHEETS STA. TO STA.

CONSTRUCTION DETAILS

F.A. RTE.	SECTION	COUNTY	TOTAL SHEETS	SHEET NO.
		DUPAGE	15	15
CONTRACT NO. XXXX				
ILLINOIS	FED. AID PROJECT			